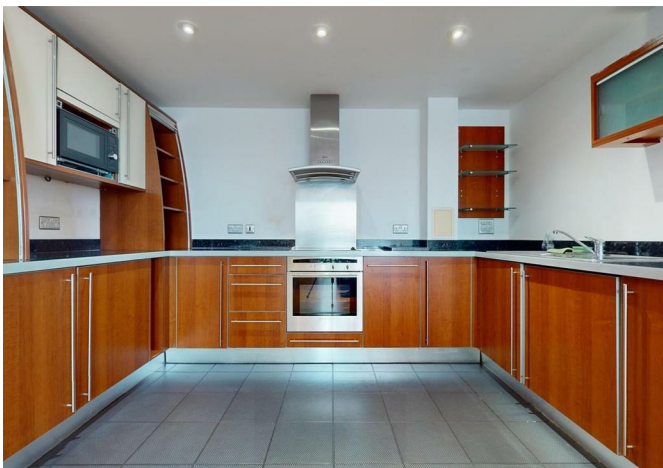




1 Newton Place, London, E14 3TS

£540,000



1 Newton Place, London, E14 3TS

£540,000

Large, contemporary, and on the water, this impressive apartment is spread across two floors and features approximately 1126sq ft of accommodation with dramatic views from your private balcony overlooking the Thames River. Featuring on the first floor a very spacious open plan lay-out, including lounge, diner and modern integrated kitchen, this property also boasts two large double bedrooms (one ensuite) on floor two.

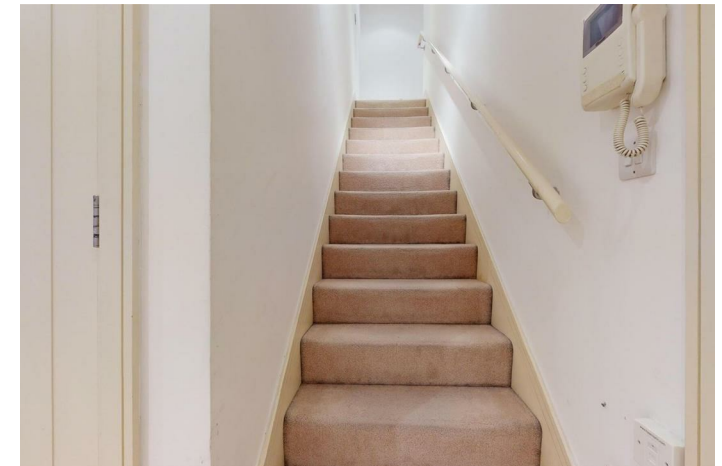
The Isle of Dogs location overlooking the Thames is ideal, because here, as you enjoy luxury, tranquility and privacy, Mudchute DLR is just a twelve minute walk, putting Liverpool Street station 30 minutes and the City 40 minutes from your front door. And the hustle, bustle, and glamour of Canary Wharf with almost endless options for food, fun, culture and shopping is on your doorstep -- including the Jubilee Line and Elizabeth line connections to places across greater London.

This is a great option for professionals working in the City, Buy - to - let investors, or those downsizing from a larger property! Chain free!

Key Features

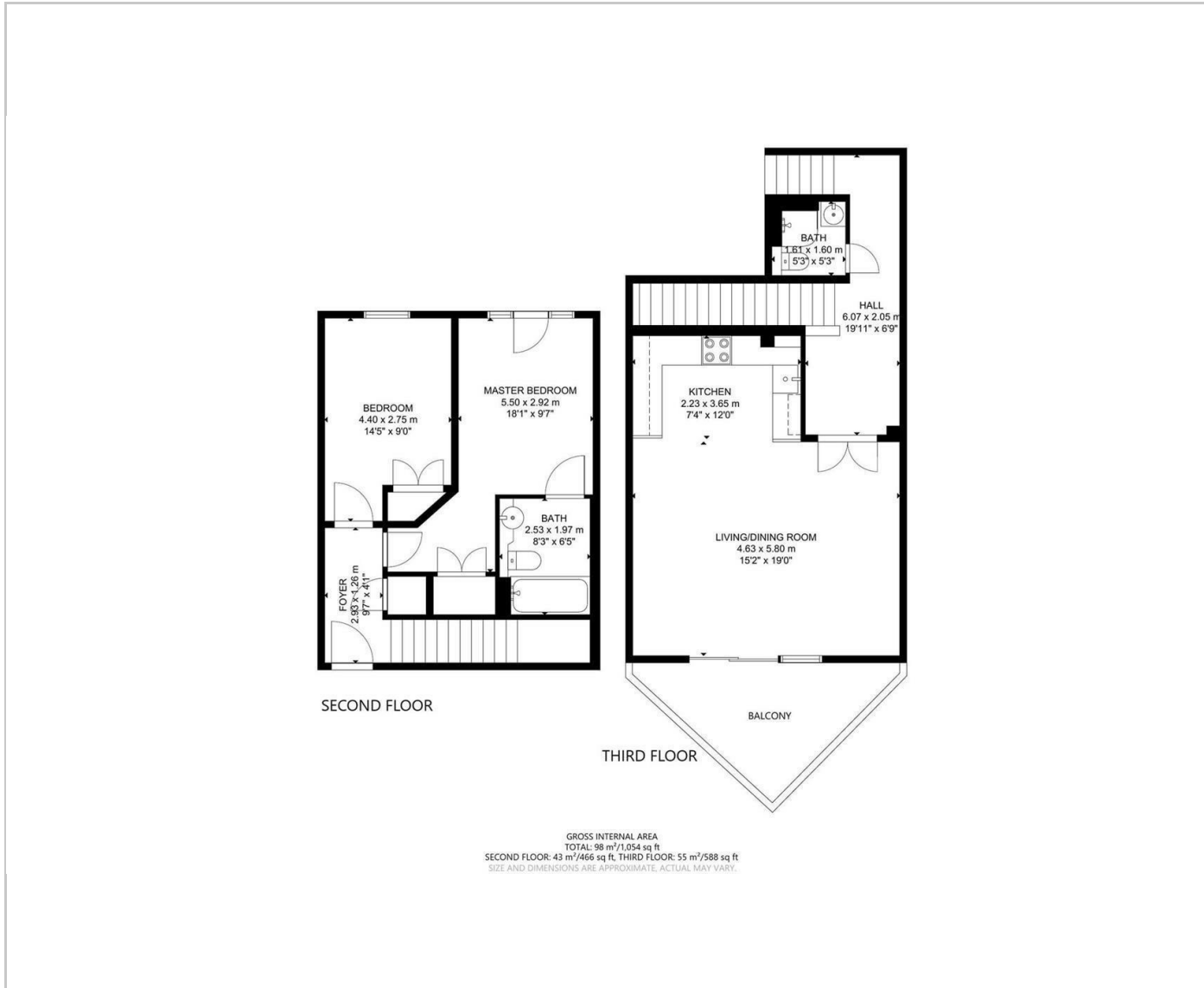
- Two Bedrooms Apartment
- Private Balcony With River Views
- 24HR Concierge and Gym
- Duplex apartment
- Close to Local amenities
- Close to Mudchute Park
- Chain free

Situation

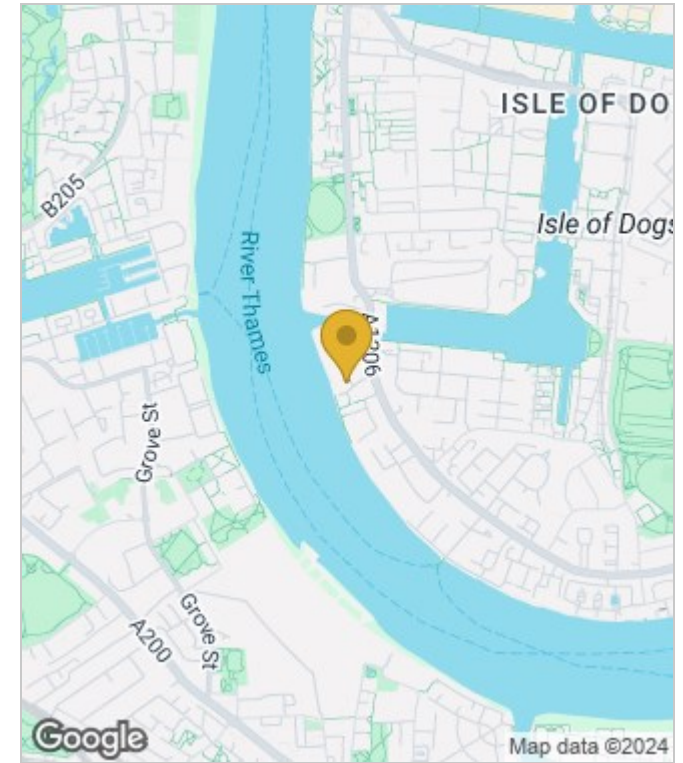


Council Tax Band: F

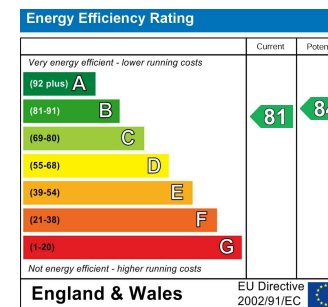
Floor Plans



Area Map



Energy Performance Graph



These particulars, whilst believed to be accurate are set out as a general outline only for guidance and do not constitute any part of an offer or contract. Intending purchasers should not rely on them as statements of representation of fact, but must satisfy themselves by inspection or otherwise as to their accuracy. No person in this firm's employment has the authority to make or give any representation or warranty in respect of the property.