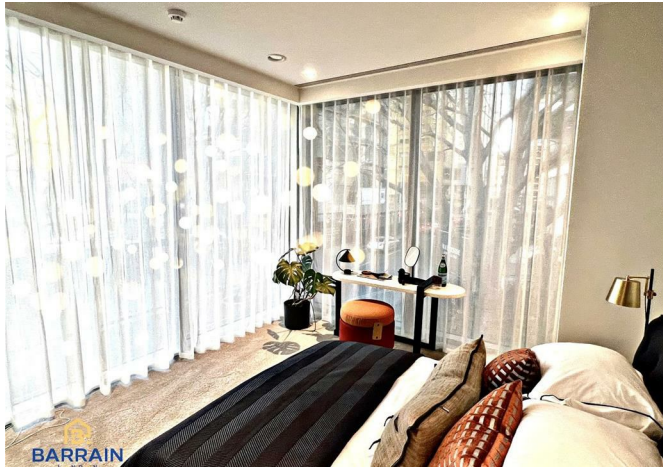




227 - 255 Ilderton Road, London, SE15 1NS

Guide price £390,000



227 - 255 Ilderton Road, London, SE15 1NS

Guide price £390,000

SOLD OFF PLAN - Contract Reassignment

Barrain London is very pleased to introduce this stunning east-facing 8th floor 1-bedroom apartment at Bermondsey Heights just a short walk to South Bermondsey station and a 5-minute train ride to London Bridge.

Featuring an impressively spacious open-plan lounge-diner, this apartment also comes with a fully integrated modern kitchen. Attractive, airy, and filled with natural light, this apartment is located in a 26-storey development with great views across Central London. Expect this building to quickly become a new prestigious landmark for the area.

The nearby area is home to iconic landmarks such as the Tower of London and Tower Bridge, as well as numerous museums, art galleries, and trendy restaurants. This combination of old and new creates a dynamic and desirable environment for both residents and visitors.

The area's lively character makes this an ideal choice for young professionals, commuters and investors alike. Completion will be in 2025. Arrange your viewing early!

Key Features

- Contract Reassignment - One bedroom apartment SOLD OFF PLAN
- Private balcony accessible from the living area and bedroom
- Stylish kitchen with integrated appliances
- 5 minutes to London Bridge from South Bermondsey station
- Lively local area with great amenities
- Concierge
- Completion 2025

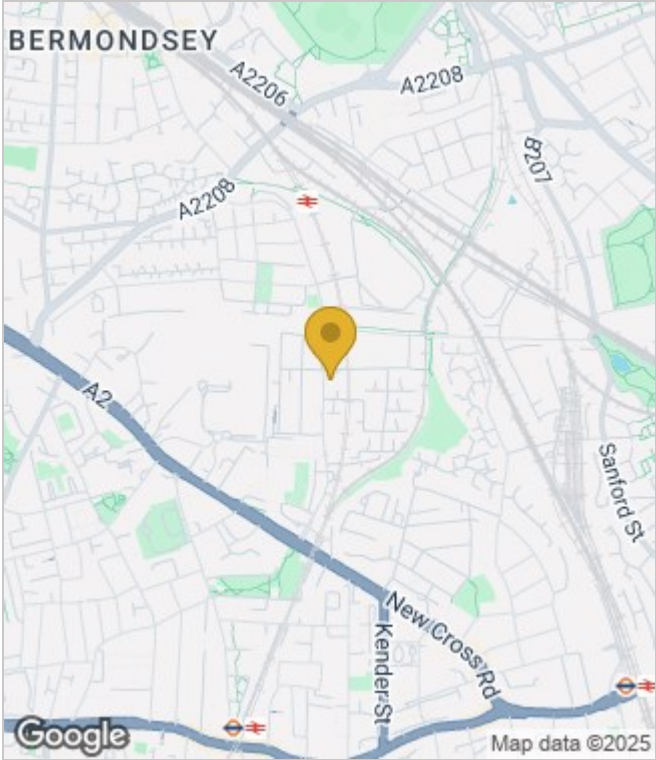
Situation

Council Tax Band: New Build

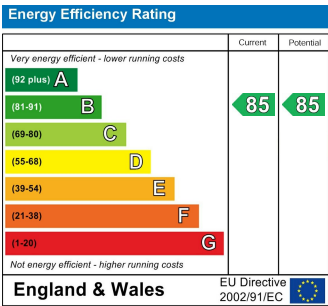
Floor Plans



Area Map



Energy Performance Graph



These particulars, whilst believed to be accurate are set out as a general outline only for guidance and do not constitute any part of an offer or contract. Intending purchasers should not rely on them as statements of representation of fact, but must satisfy themselves by inspection or otherwise as to their accuracy. No person in this firms employment has the authority to make or give any representation or warranty in respect of the property.