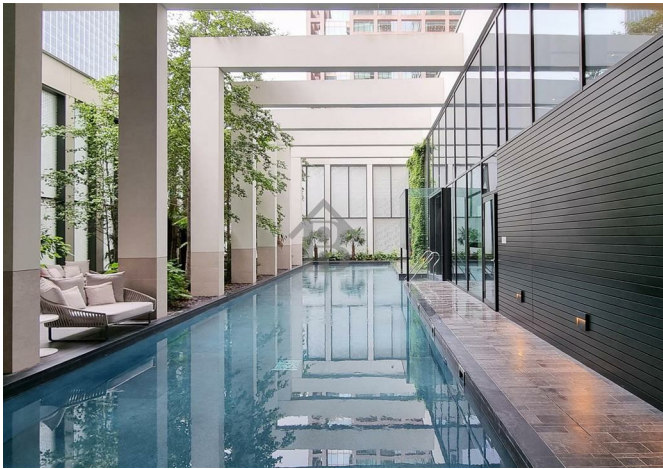
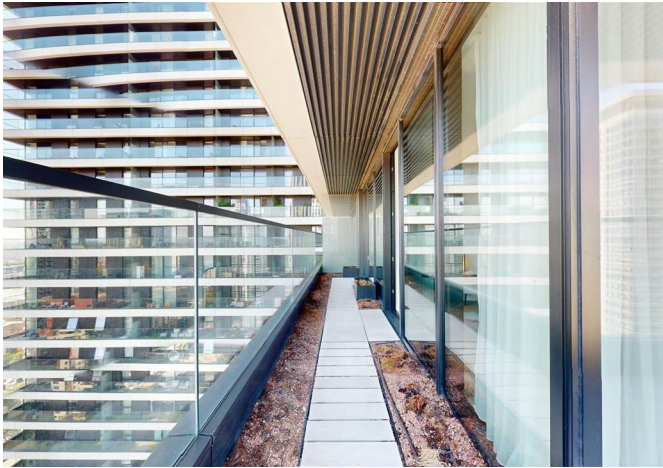




1 Wards Place, London, E14 9DY

£1,150,000



1 Wards Place, London, E14 9DY

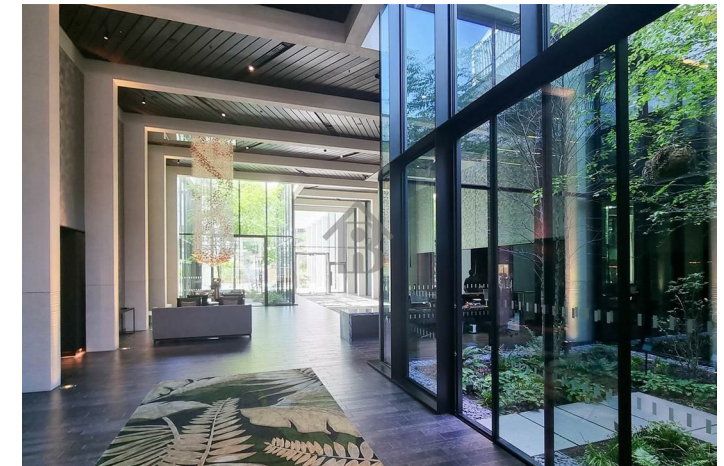
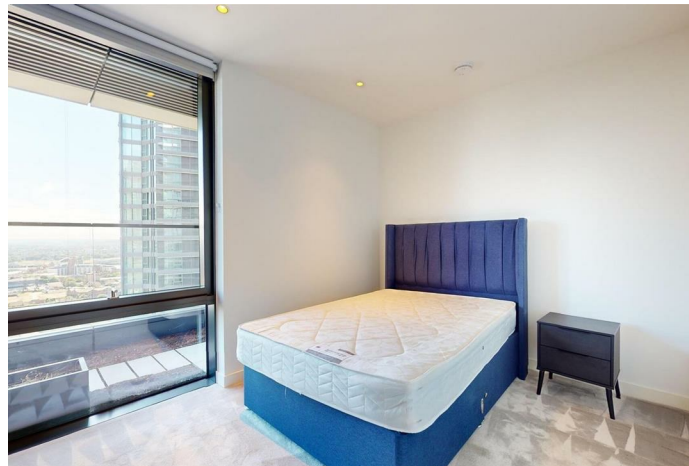
£1,150,000

Very spacious and with fabulous views of the surrounding cityscape from the private balcony, this beautiful modern property features an open plan reception area with a state-of-art integrated kitchen. two double bedrooms (one of those ensuite), and a chic modern bathroom.

Key Features

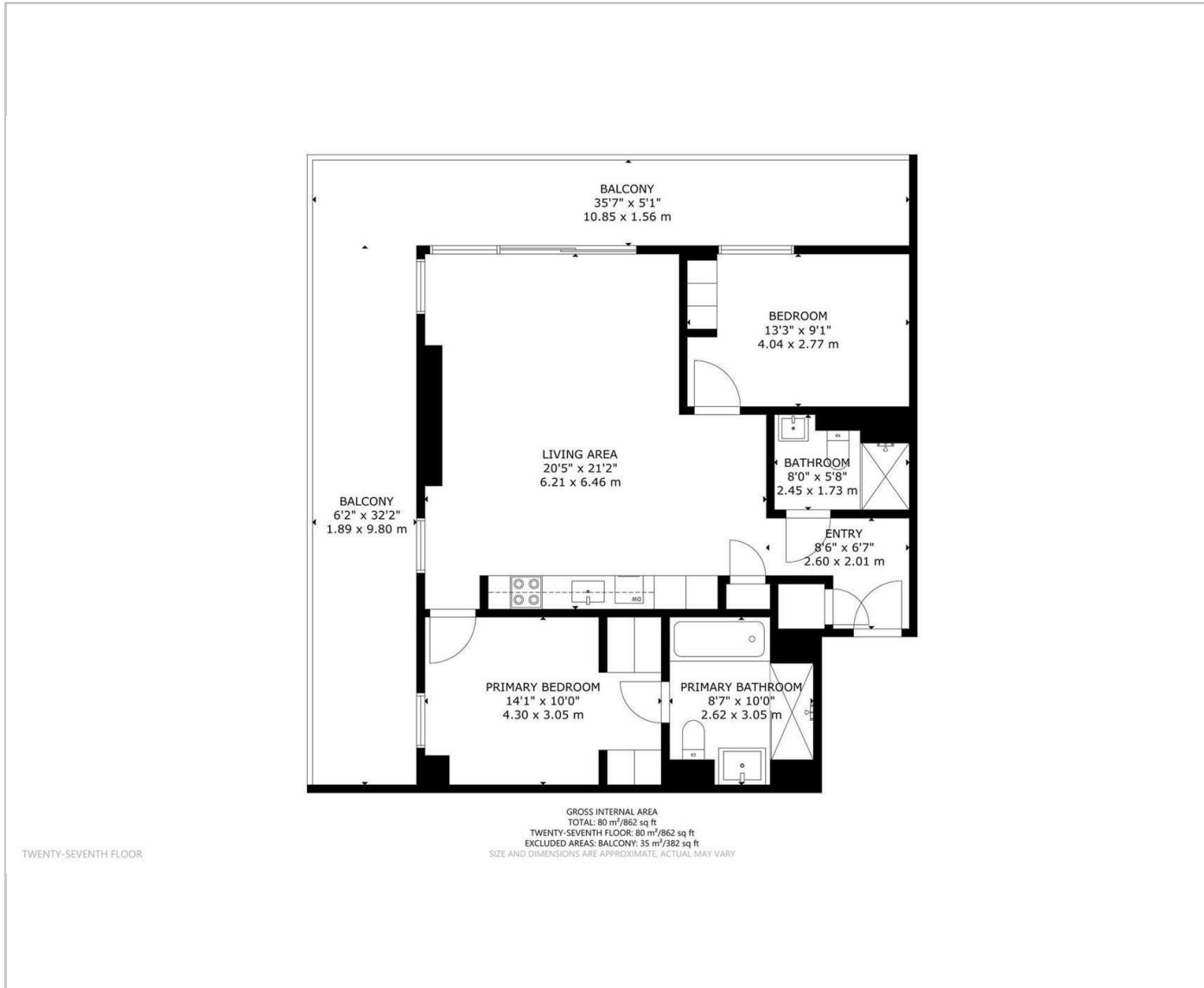
- Stylish Two Bedrooms Two Bathrooms
- Attractive open plan reception with space to dine and work
- Chic open plan kitchen with integrated appliances and emerald finishes
- Residents Gym / Pool / Private Cinema
- Luxurious shower room and main en suite bathroom
- Exclusive sky lounge and cocktail bar in the building
- Moments away from Jubilee Line
- Private Balcony with Garden Pack
- Underground Parking
- 999 Lease

Situation

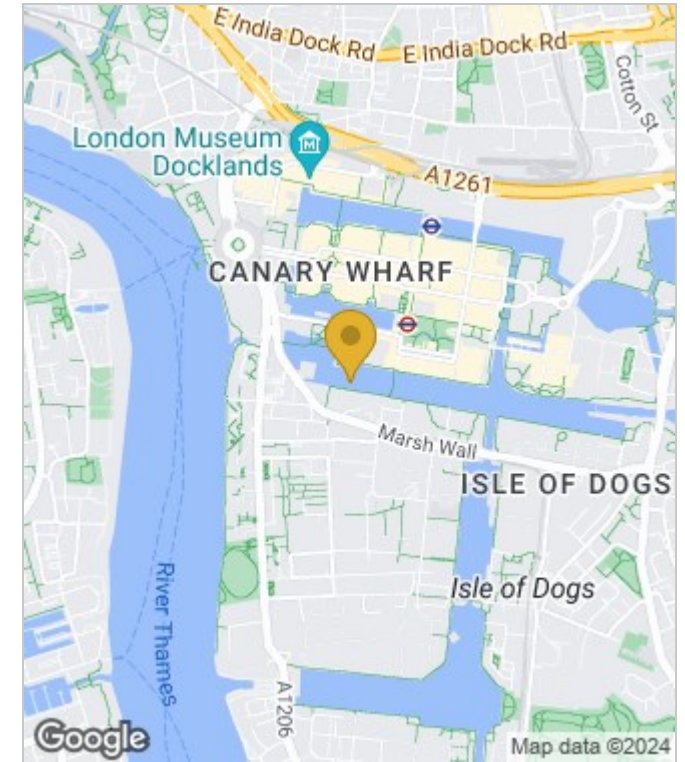


Council Tax Band: F

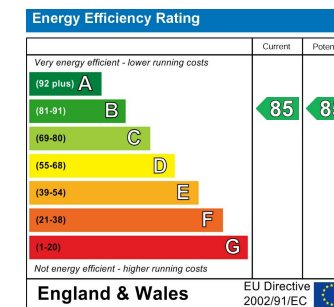
Floor Plans



Area Map



Energy Performance Graph



These particulars, whilst believed to be accurate are set out as a general outline only for guidance and do not constitute any part of an offer or contract. Intending purchasers should not rely on them as statements of representation of fact, but must satisfy themselves by inspection or otherwise as to their accuracy. No person in this firm's employment has the authority to make or give any representation or warranty in respect of the property.