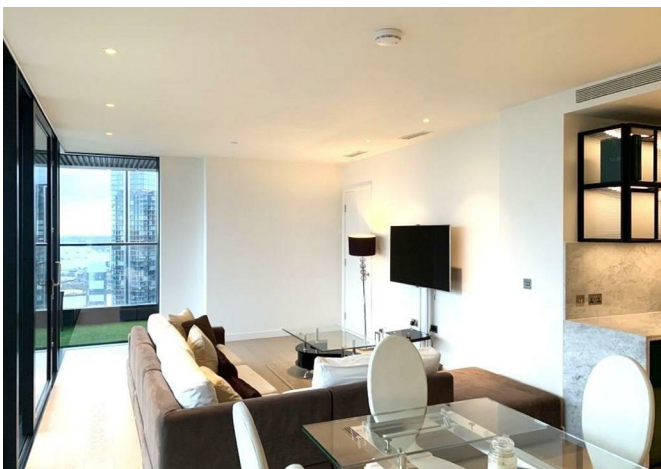
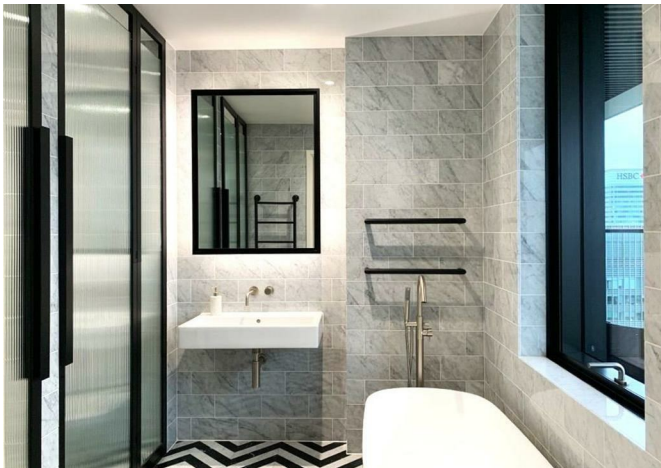


Wards Place, London, E14 9EJ
£4,500 Per month



Wards Place, London, E14 9EJ

£4,500 Per month

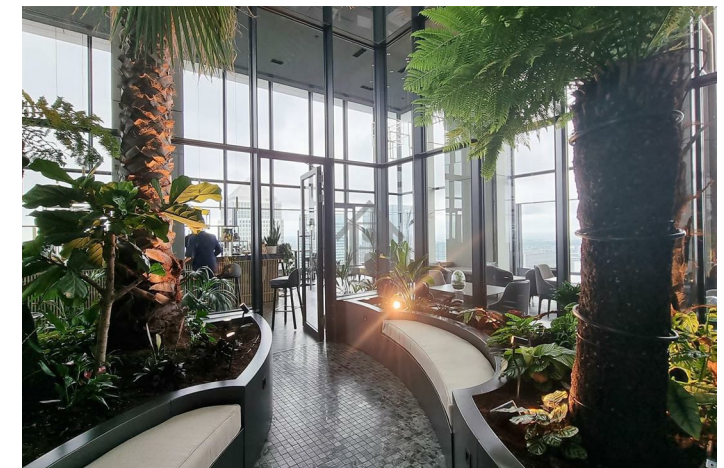
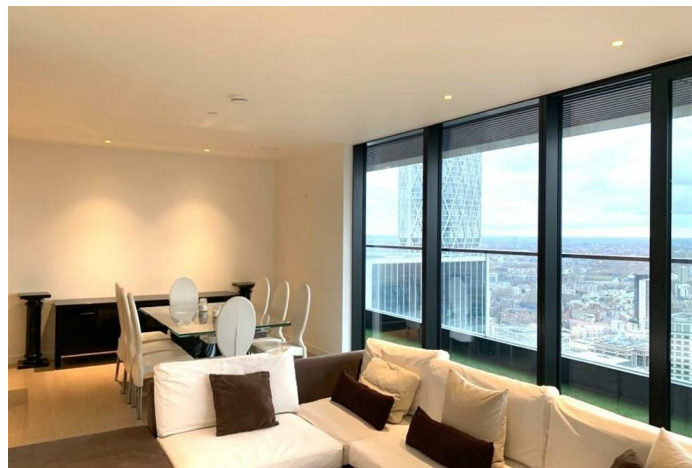
LONG LET - High Floor luxury two bedroom apartment set out in the iconic Warden development in the heart of Canary Wharf. The property comprises; a spacious open plan reception area with integrated kitchen with Island, main bedroom with en-suite, second double bedroom, chic bathroom and a large private balcony with stunning views.

Ideally located in the center of Canary Wharf, Warden London creates a perfect combination of state-of-the-art city living and verdant urban oasis. The development features 24/7 concierge service and residents have exclusive access to top-of-the-range facilities including a state of art gym, swimming pool, cinema, sky bar and lounge located on the 53rd floor, offering breath-taking views across the capital.

Key Features

- Kitchen Island
- High- end Furniture Package
- Chic open plan kitchen with integrated appliances and emerald finishes
- Residents Gym / Pool / Private Cinema
- Private Cinema
- 24/7 Concierge
- Under Ground Parking - Via Separate Negotiation
- Luxurious shower room and main en suite bathroom
- Two bedrooms, Two Bathrooms
- 45th - 48th Floor

Situation

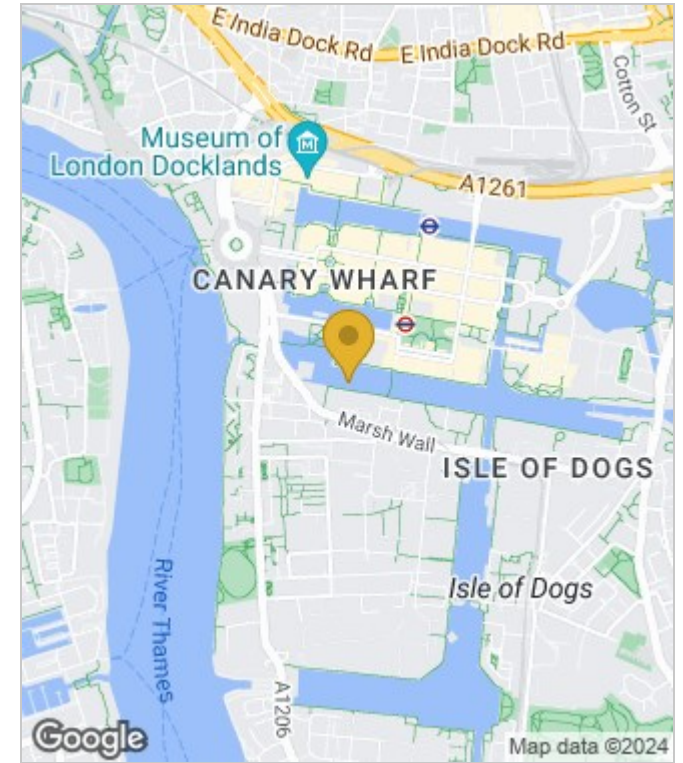


Council Tax Band: F

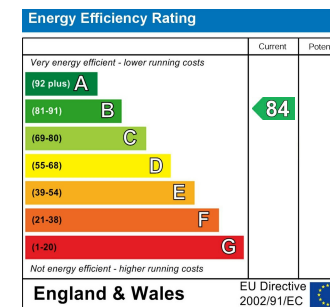
Floor Plans



Area Map



Energy Performance Graph



These particulars, whilst believed to be accurate are set out as a general outline only for guidance and do not constitute any part of an offer or contract. Intending purchasers should not rely on them as statements of representation of fact, but must satisfy themselves by inspection or otherwise as to their accuracy. No person in this firm's employment has the authority to make or give any representation or warranty in respect of the property.