

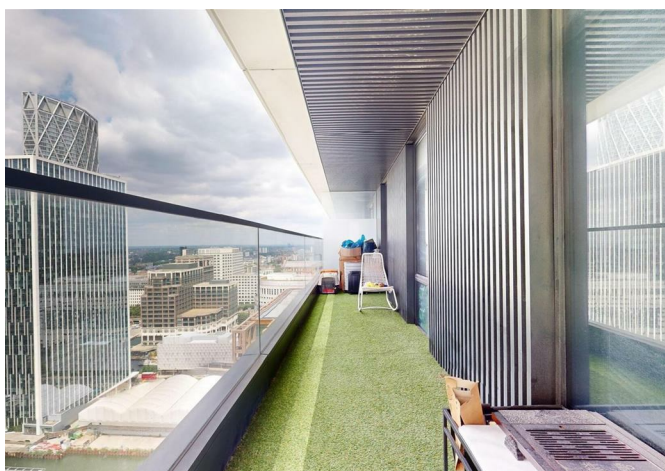


**BARRAIN**  
LONDON



1 Wards Place, London, E14 9DU

£1,100,000



## 1 Wards Place, London, E14 9DU

£1,100,000

Introducing this luxury two bedroom apartment in the exclusive Warden development in the heart of Canary Wharf!

Very spacious with fabulous views of the surrounding cityscape from your private balcony, this beautiful modern property features an open plan reception area with state-of-art integrated kitchen. two double bedrooms (one of those ensuite), and chic modern bathroom.

Warden London brings together a perfect combination of convenient location and ultra modern city living within a verdant urban oasis. Residents have exclusive access to top-of-the-range facilities including 24/7 concierge service, an amazing gym, swimming pool, cinema, and sky bar. The lounge located on the 53rd floor offers breath-taking views across the capital.

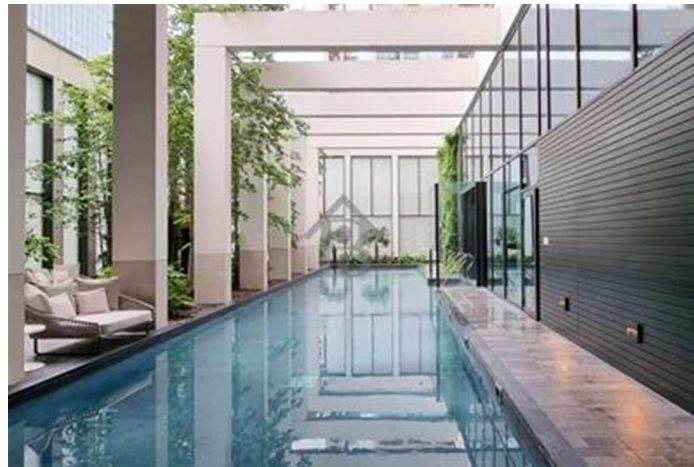
All of this is just a few minutes walk to Canary Wharf Underground and DLR station, giving residents the the benefit of quick access to the whole of London. This is a must see!



Description



Situation



null

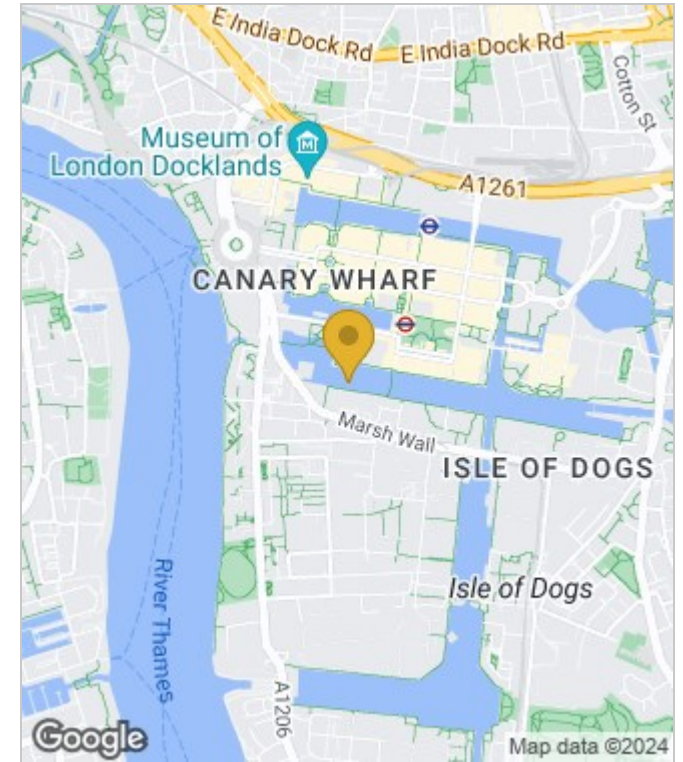
Council Tax Band: E

Available:

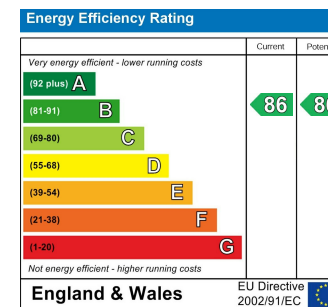
## Floor Plans



## Area Map



## Energy Performance Graph



These particulars, whilst believed to be accurate are set out as a general outline only for guidance and do not constitute any part of an offer or contract. Intending purchasers should not rely on them as statements of representation of fact, but must satisfy themselves by inspection or otherwise as to their accuracy. No person in this firm's employment has the authority to make or give any representation or warranty in respect of the property.