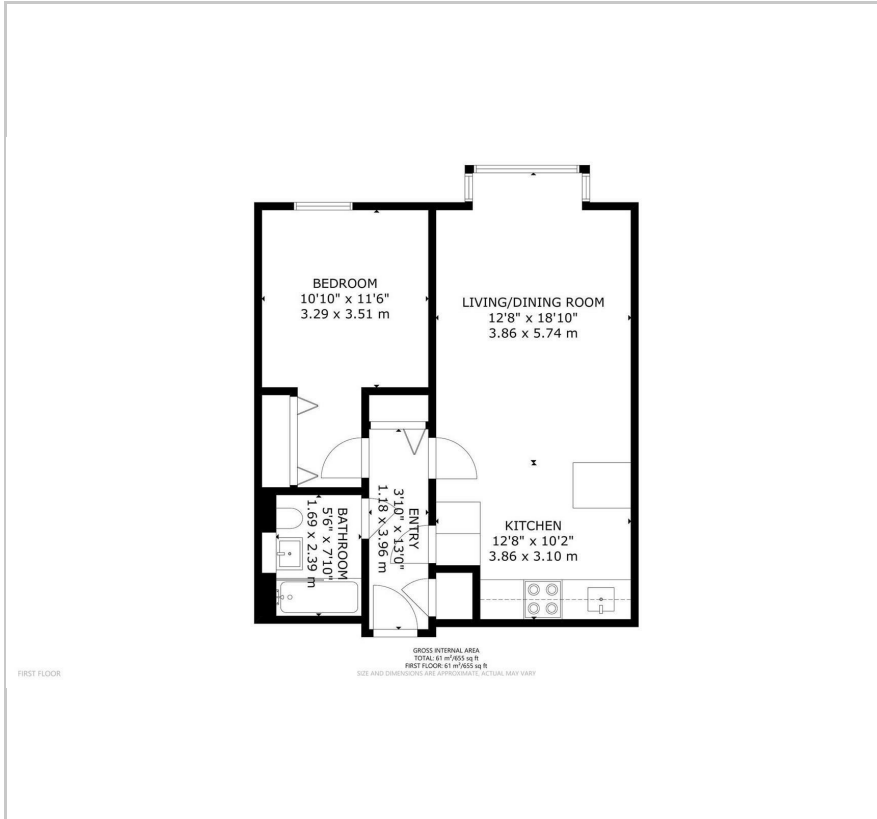


2 Gatliff Road

, London, SW1W 8DT

Offers in excess of £700,000

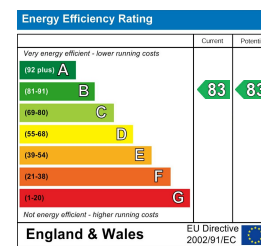
Floor Plan



Area Map



Energy Efficiency Graph



Viewing

Please contact our Barrain Property Advisors Office on 02037807991 if you wish to arrange a viewing appointment for this property or require further information.

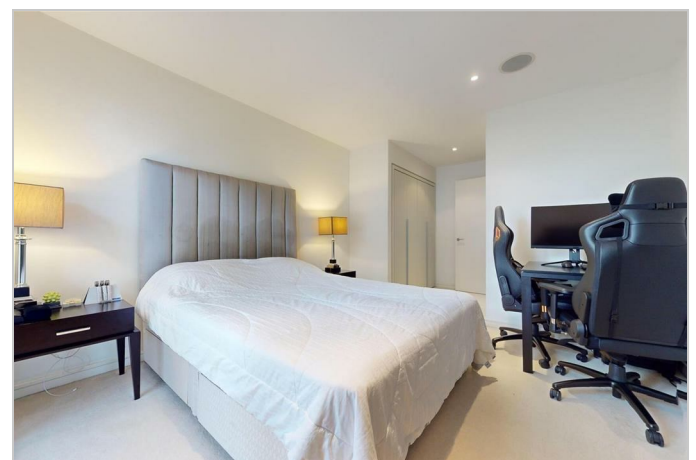
- Large One Bedroom Apartment in luxury building
- Fully fitted, stylish kitchen
- 24 hour concierge, Spa, and Gym
- Integrated sound system
- Close-by Thames' riverside eateries and Sloane Square shopping and restaurants
- Short walk to Sloane Square District line station

Barrain Property Advisors is pleased to present to the market this exceptional one bedroom apartment within the Moore House building of the exclusive Grosvenor Waterside development in SW1.

The modern open plan layout of the property includes a large reception area and fully integrated kitchen. Balancing this is the large, bright bedroom with extra storage. Space, style and refinement are on display here at every point, beginning in the elegant lobby.

Only a few minutes walk both to the Thames riverfront or Sloane Square, this luxury property is located in one of London's finest neighbourhoods. As the new owner, you will enjoy the convenience of having the exclusive shops and restaurants of Chelsea on doorstep, as well as the Sloane Square District Line station. This property features a 24/7 concierge with Spa and Gym access for the residents,

Enjoy luxury quality in an premium location at exceptional value. Please call to arrange your private viewing.



These particulars, whilst believed to be accurate are set out as a general outline only for guidance and do not constitute any part of an offer or contract. Intending purchasers should not rely on them as statements of representation of fact, but must satisfy themselves by inspection or otherwise as to their accuracy. No person in this firm's employment has the authority to make or give any representation or warranty in respect of the property.