



1 Albert Basin Way, London, E16 2QN

£335,000



1 Albert Basin Way, London, E16 2QN

£335,000

This bright airy apartment beside the Thames on Albert Basin Way in the heart of London was built in 2005 and offers contemporary living within a well-maintained building with 24 hour security.

With a total of 603 sq. ft, there is ample living and sleeping accommodation. This includes the attractive, spacious, open plan kitchen/diner/lounge – perfect for entertaining or simply relaxing after a long day – and the large double bedroom as well.

The new owner will appreciate the less five minutes walk to Galleons Reach DLR station (great for commuters!), which puts the whole of London at their feet. Locally they will enjoy easy access to local amenities including the Galleons Reach shopping area.

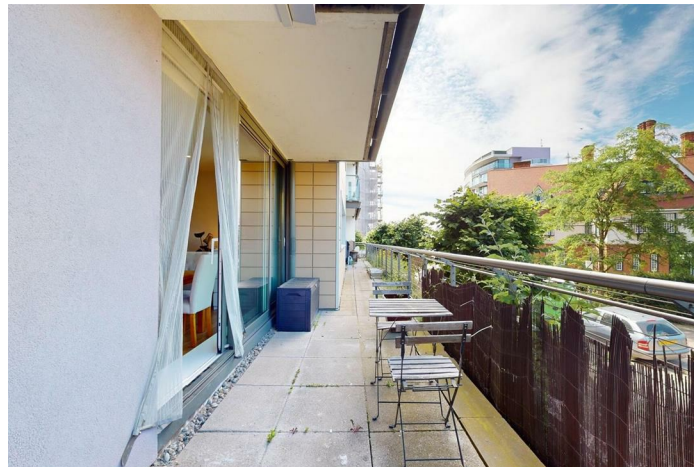
Whether you enjoy a leisurely stroll in the nearby green spaces like New Beckton Park, or exploring all that London has to offer, this apartment provides the perfect base.

This is a great opportunity for first time buyers, investors and commuters!

Key Features

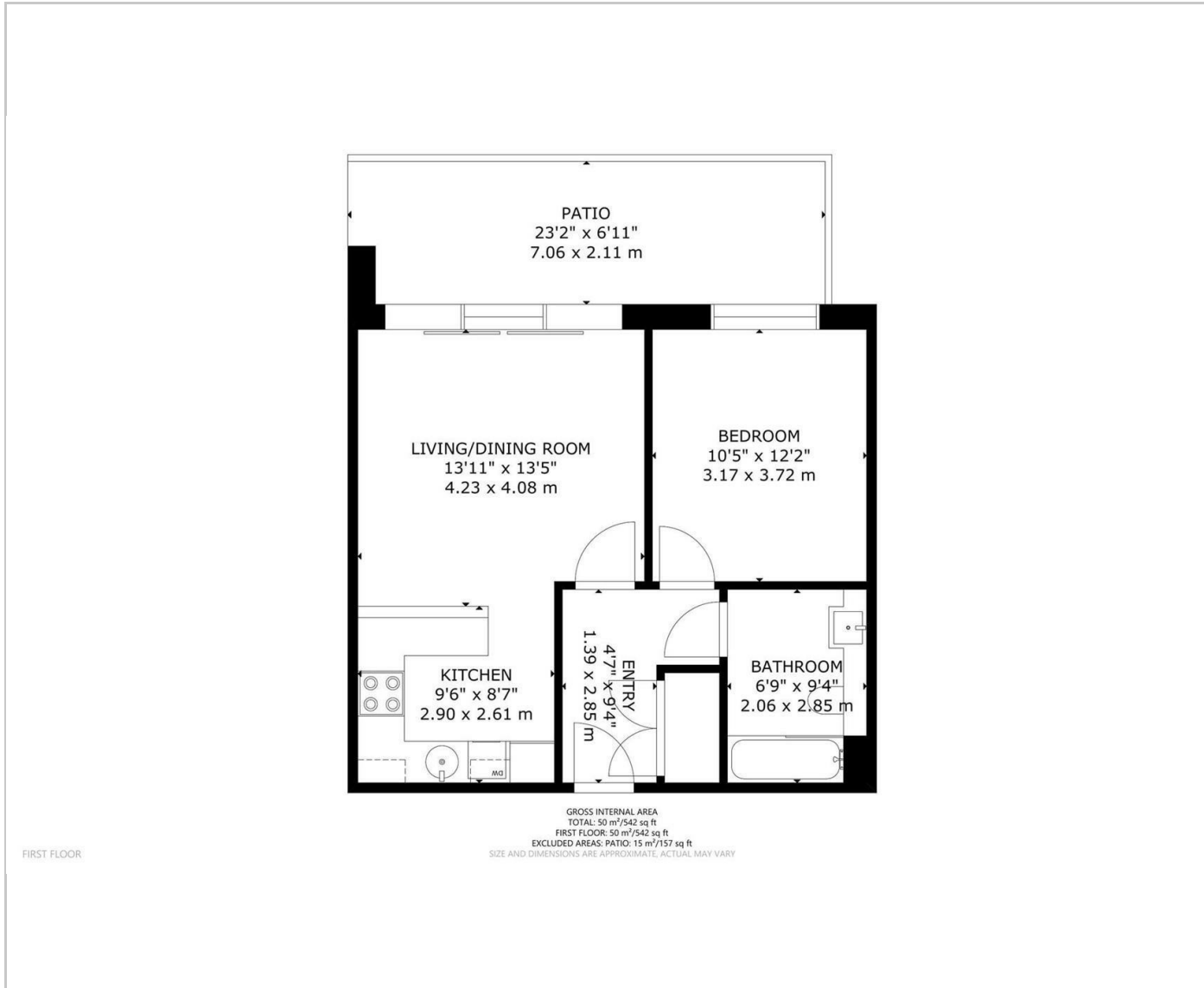
- Spacious 1 bedroom flat in great condition
- Balcony
- Modern open plan interior
- less than 30 minutes to Bank
- Less than 5 minutes walk to Galleons Reach DLR station
- Parking space
- 24 hour security

Situation

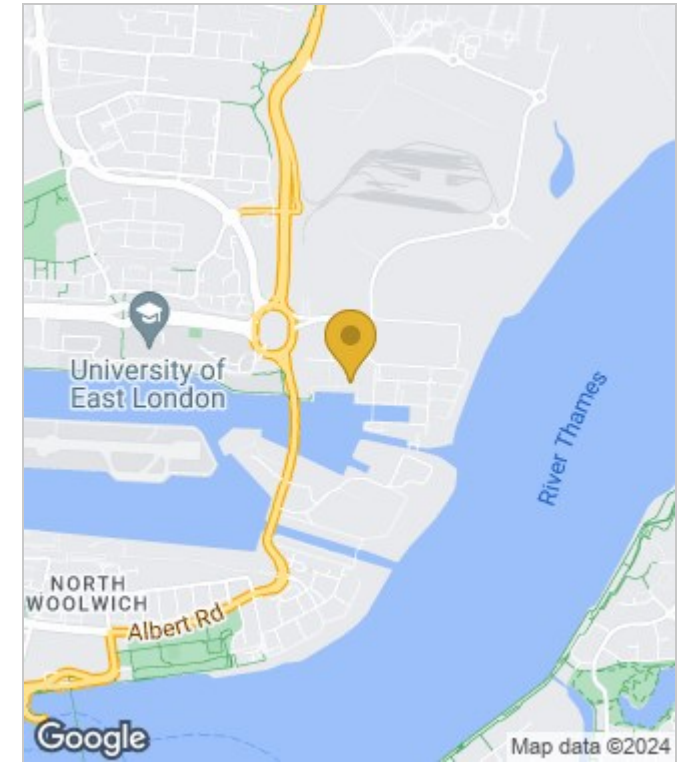


Council Tax Band: C

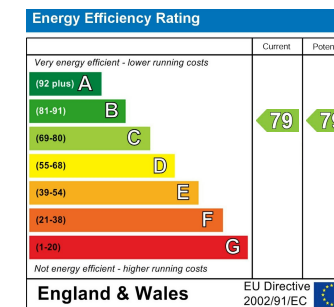
Floor Plans



Area Map



Energy Performance Graph



These particulars, whilst believed to be accurate are set out as a general outline only for guidance and do not constitute any part of an offer or contract. Intending purchasers should not rely on them as statements of representation of fact, but must satisfy themselves by inspection or otherwise as to their accuracy. No person in this firm's employment has the authority to make or give any representation or warranty in respect of the property.