

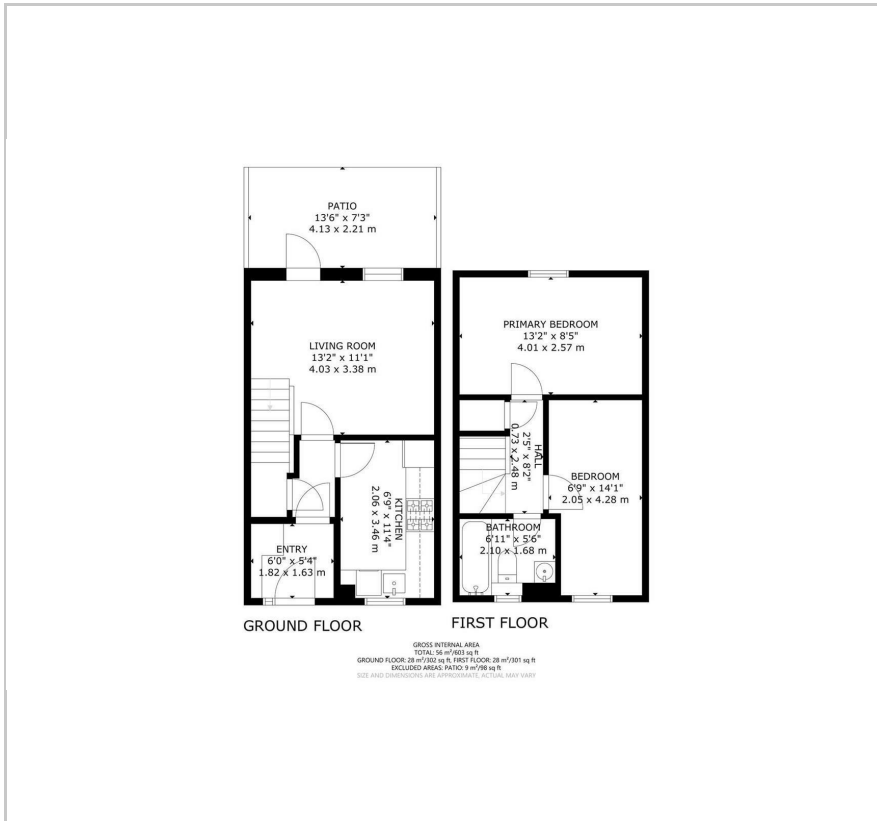
**Bowyer Close**

, London, E6 5XU

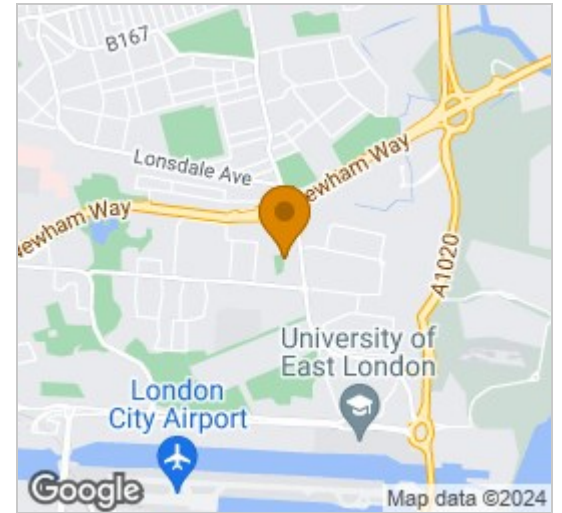
Guide price £400,000



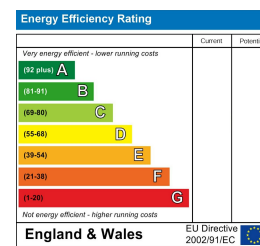
## Floor Plan



## Area Map



## Energy Efficiency Graph



## Viewing

Please contact our Barrain Property Advisors Office on 02037807991 if you wish to arrange a viewing appointment for this property or require further information.

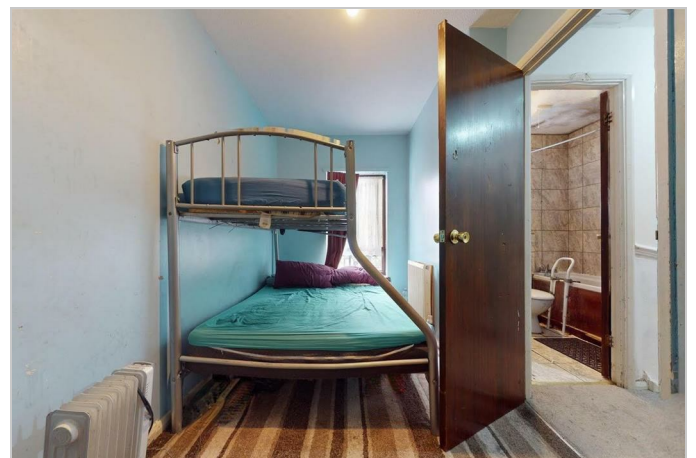


Introducing this attractive 2 bedroom end of terrace located in Bowyer Close just a few minutes to the station. Great for first time buyers, investors and commuters.

The property features two comfortable bedrooms, and ample living space for a small family and their guests. Off-street parking on the front is a big plus and the property also has a rear garden with an outbuilding for outdoor activities.

Located conveniently near to popular supermarkets such as ASDA and LIDL, shopping is a breeze, and Beckton station is just a stone's throw away, providing easy access to transportation for your daily commute or leisurely outings.

This is a great opportunity to find an affordable home -- for first time buyers, investors or anyone downsizing from a larger property. Book a viewing today!



These particulars, whilst believed to be accurate are set out as a general outline only for guidance and do not constitute any part of an offer or contract. Intending purchasers should not rely on them as statements of representation of fact, but must satisfy themselves by inspection or otherwise as to their accuracy. No person in this firm's employment has the authority to make or give any representation or warranty in respect of the property.