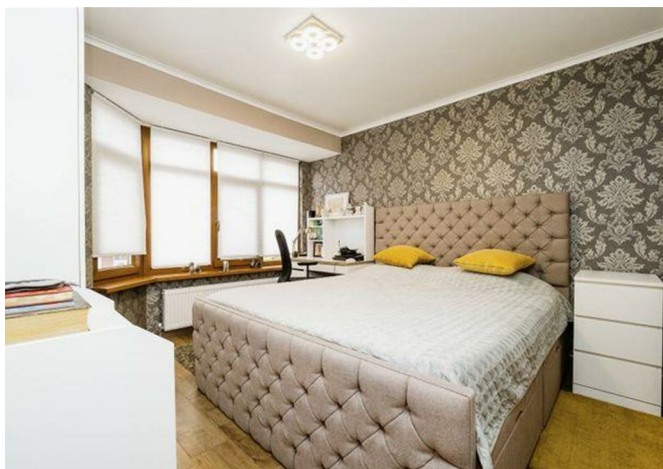


Vicarage Lane, London, E6 6AB

Asking price £600,000



Vicarage Lane, London, E6 6AB

Asking price £600,000

This very well maintained end-of-terrace house features exceptional living and sleeping space spread across two floors, and a convertible loft space. The ground floor feature an extended open plan kitchen diner, with a separate living room and shower-utility room.

All of these features will be very useful to any busy family, as will the attached garage and drive. And there is potential for further extension over the garage (STPP)

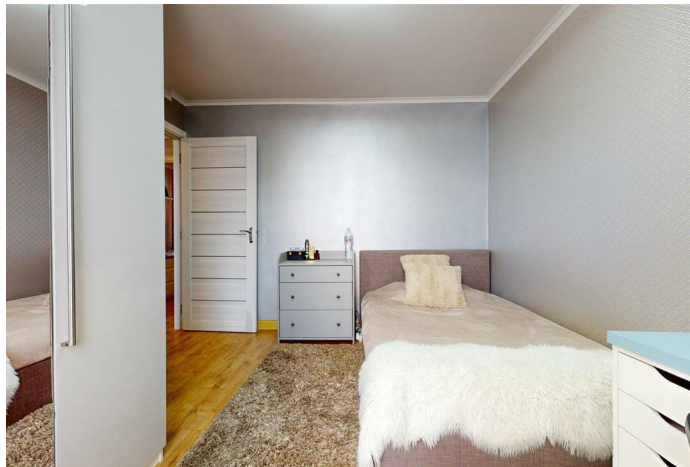
Conveniently located just a two-minute walk away from the outstanding Vicarage Primary School, this home is ideal for families with young children, who will also appreciate the well-kept garden with a sturdy brick outbuilding. Of course, the short walk to East Ham underground and Beckton DLR stations ensures convenient commuting. Supermarkets, including Asda, LIDL and Tesco, are also close-by.

A must see family home!

Key Features

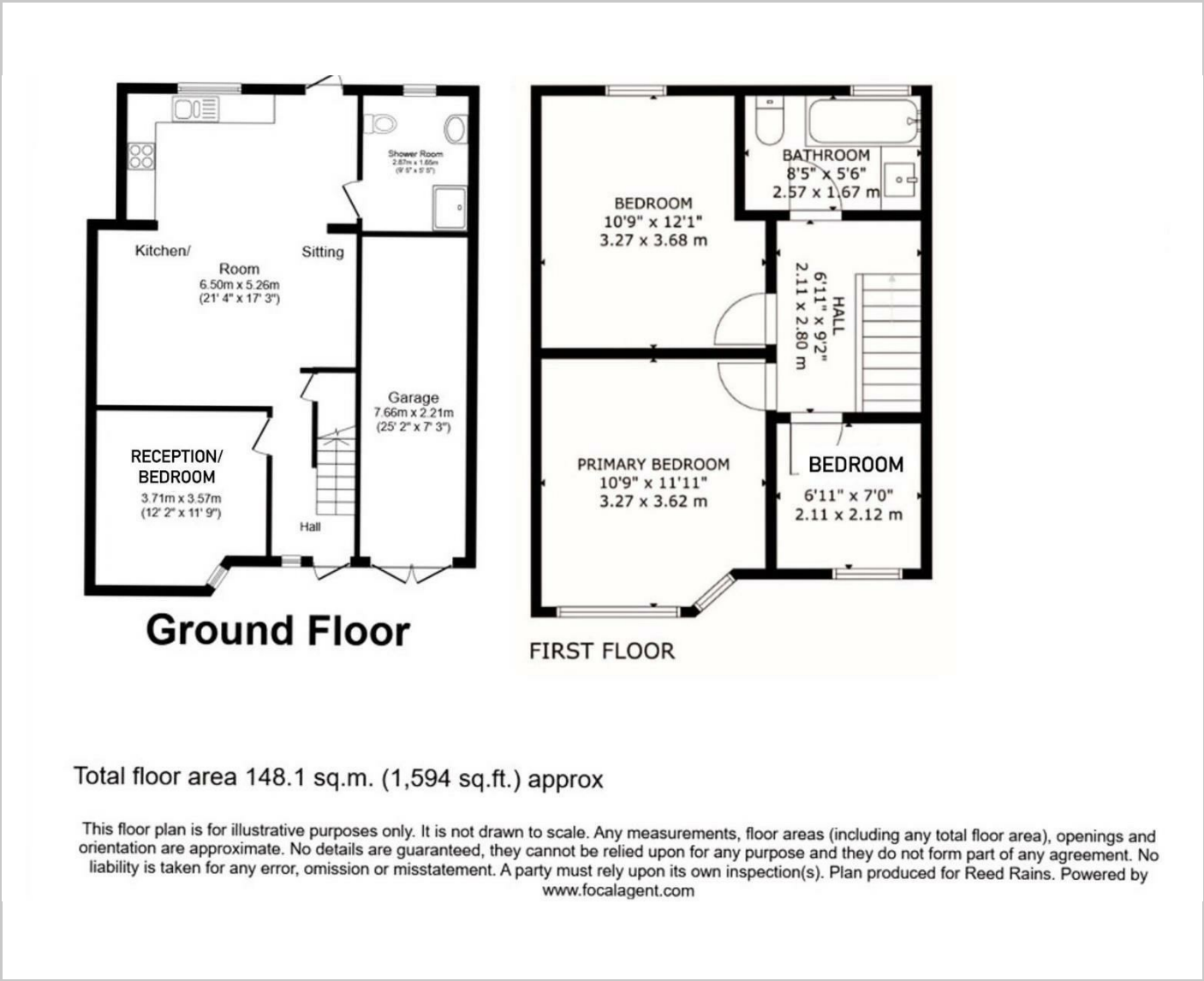
- Extended end of terrace family home in very good condition
- 3 bedroom on first floor
- Open plan kitchen-diner-family room with separate living room
- Two bathrooms
- Attached garage
- Two minute walk from outstanding Vicarage Primary School
- Less than 20 minute walk to East Ham Underground and Beckton DLR
- Extendable on the side and loft space (STPP)

Situation

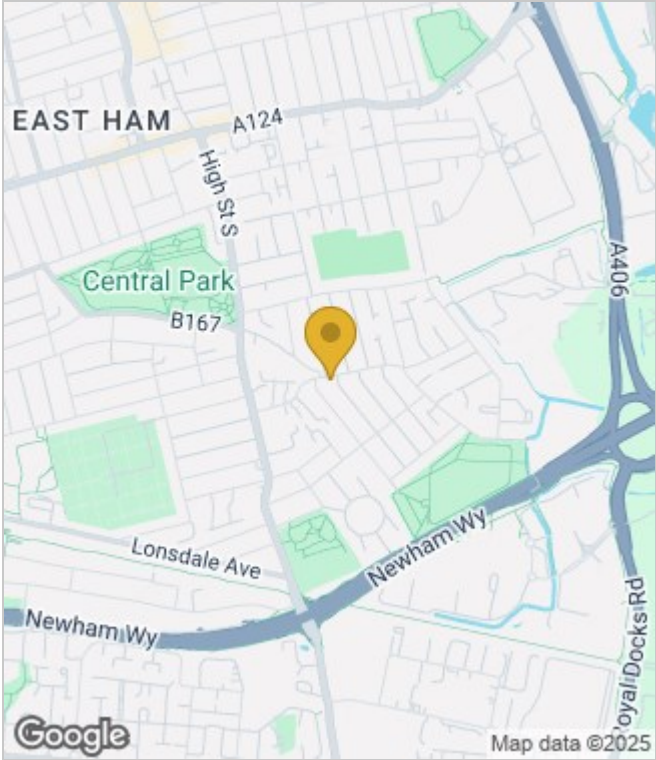


Council Tax Band: D

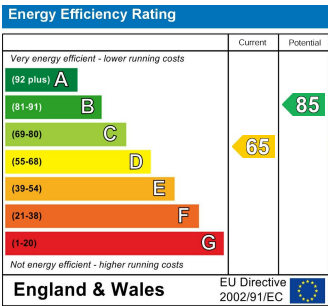
Floor Plans



Area Map



Energy Performance Graph



These particulars, whilst believed to be accurate are set out as a general outline only for guidance and do not constitute any part of an offer or contract. Intending purchasers should not rely on them as statements of representation of fact, but must satisfy themselves by inspection or otherwise as to their accuracy. No person in this firms employment has the authority to make or give any representation or warranty in respect of the property.