



BARRAIN
L O N D O N



10 Park Drive, London, E14 9ZW
£4,200 Per month



10 Park Drive, London, E14 9ZW

£4,200 Per month

We are pleased to offer this stunning apartment located within the 10 Park Drive development. The apartment is set over approximately 1029 sq ft and offers reception room, kitchen ,2 bedroom, 2 bathrooms.

Very high end furniture pack is fitted as well as electric blinds.

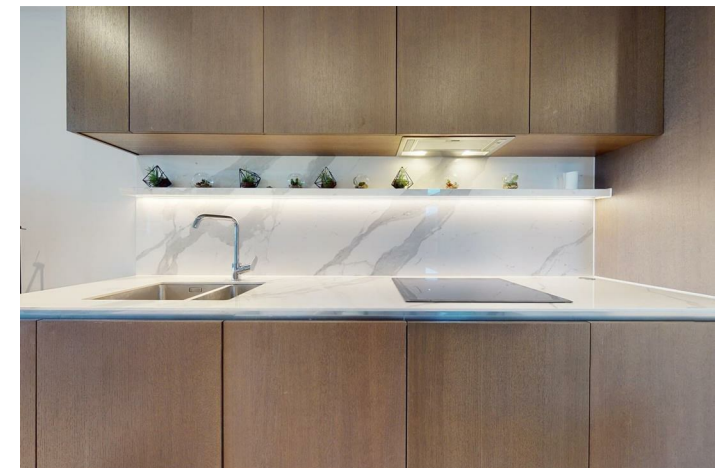
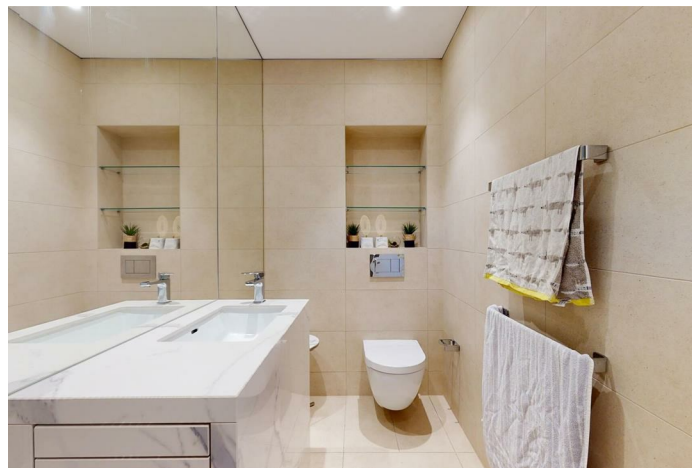
10 Park Drive is the first private development located within the Canary Wharf district, located within the new Wood Wharf development, London, E14 and close to transport links including Canary Wharf Jubilee line underground station and Elizabeth Line Station.

Residents will enjoy 24 hour concierge, roof terrace and access to Third Space gymnasium.

Description

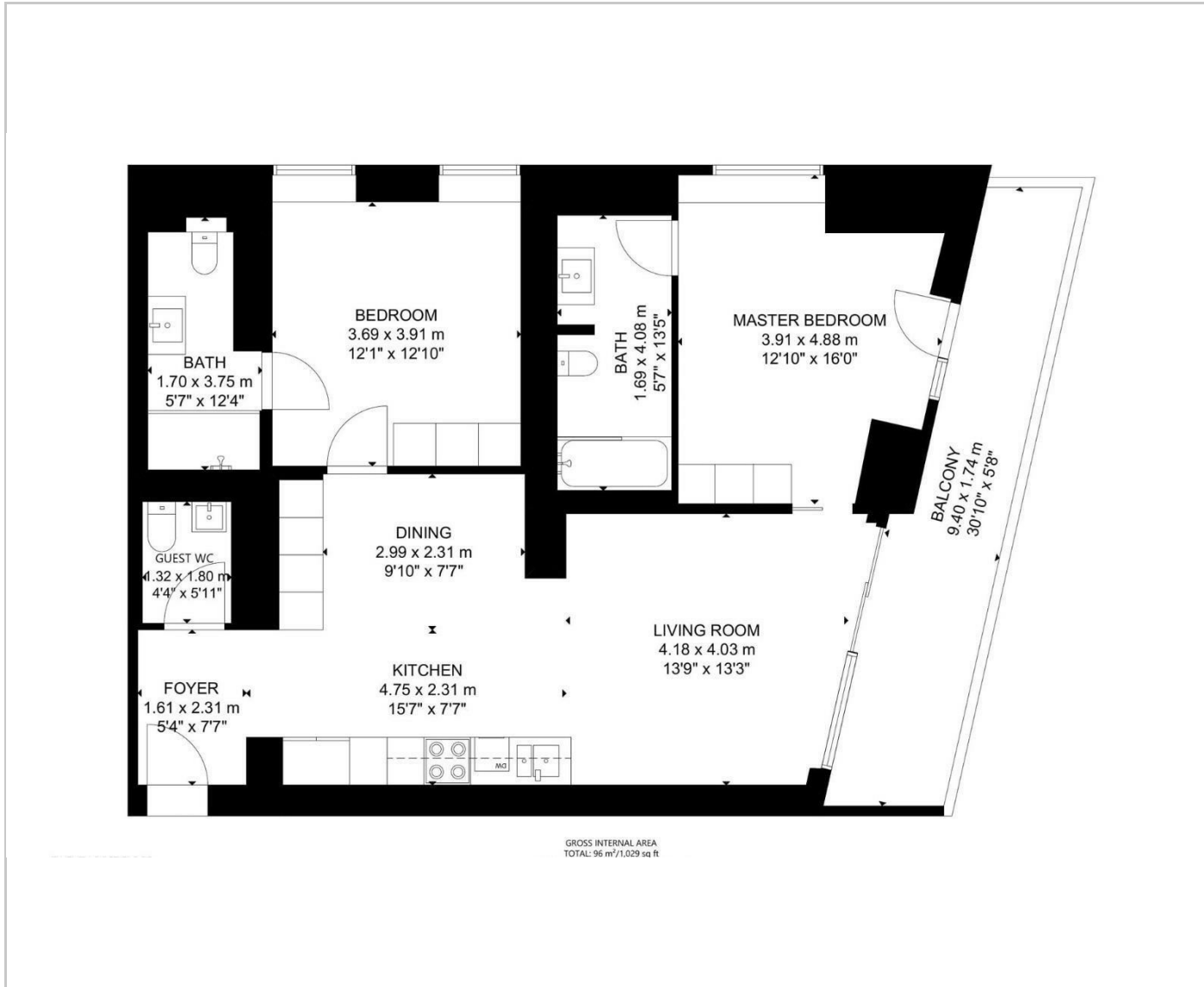


Situation

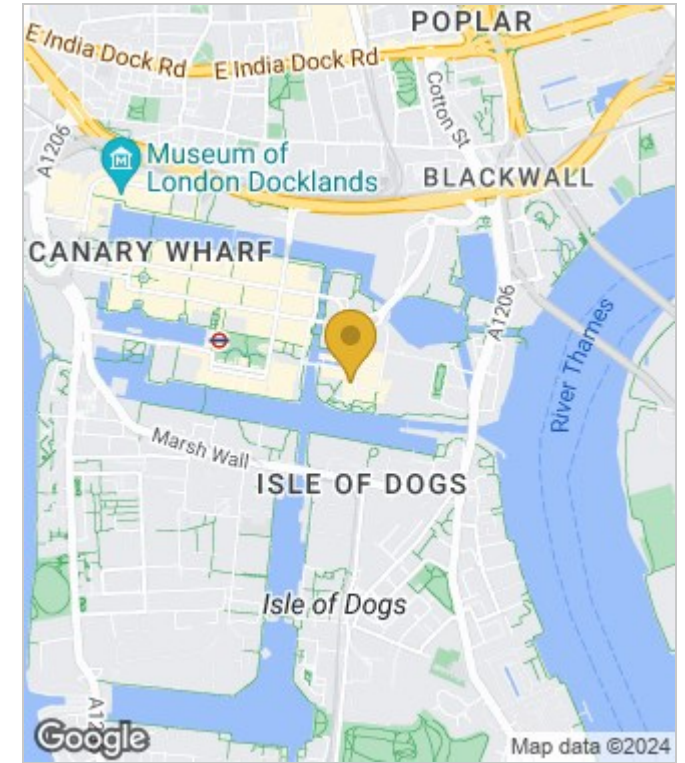


Furnished
Council Tax Band: F
Available: 5th August 2024

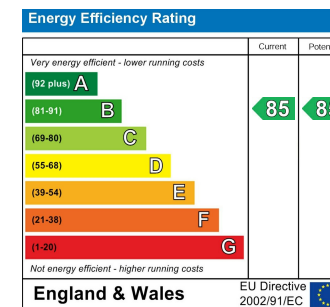
Floor Plans



Area Map



Energy Performance Graph



These particulars, whilst believed to be accurate are set out as a general outline only for guidance and do not constitute any part of an offer or contract. Intending purchasers should not rely on them as statements of representation of fact, but must satisfy themselves by inspection or otherwise as to their accuracy. No person in this firm's employment has the authority to make or give any representation or warranty in respect of the property.