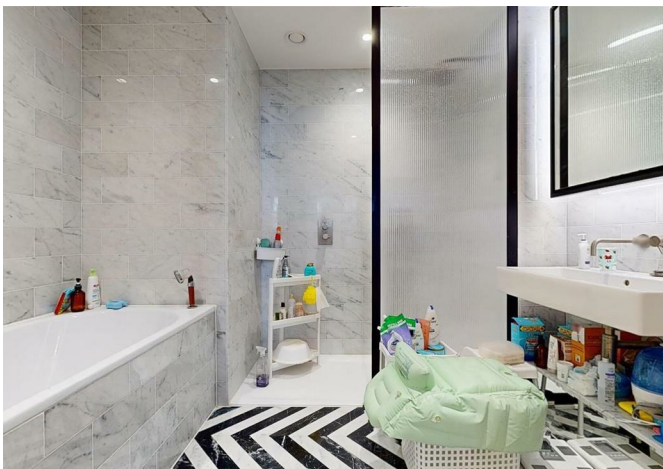




1 Wards Place, London, E14 9DY
Asking price £1,150,000



1 Wards Place, London, E14 9DY

Asking price £1,150,000

Very spacious and with fabulous views of the surrounding cityscape from the private balcony, this beautiful modern property features an open plan reception area with a state-of-art integrated kitchen. two double bedrooms (one of those ensuite), and a chic modern bathroom.

Wardian London brings together a perfect combination of convenient location and ultra modern city living within a verdant urban oasis. Residents have exclusive access to top-of-the-range facilities including 24/7 concierge service, an amazing gym, swimming pool, cinema, and sky bar. The lounge located on the 53rd floor offers breath-taking views across the capital.

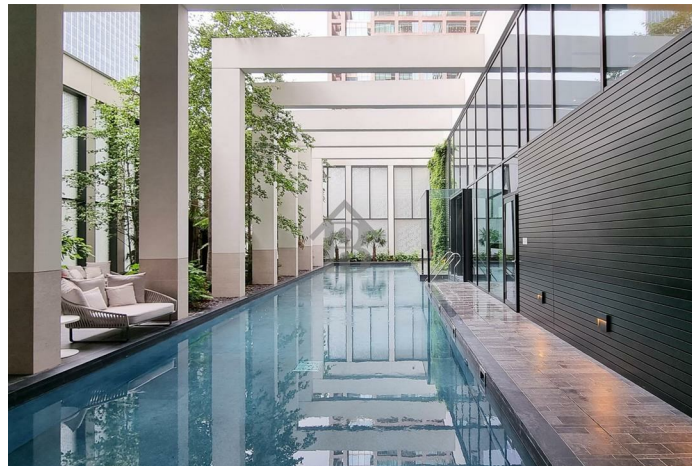
The exclusive Wardian development in the heart of Canary Wharf is just a few minutes walk to Canary Wharf Underground and DLR stations, giving residents the the benefit of quick access to the whole of London.

Arrange your viewing today!

Key Features

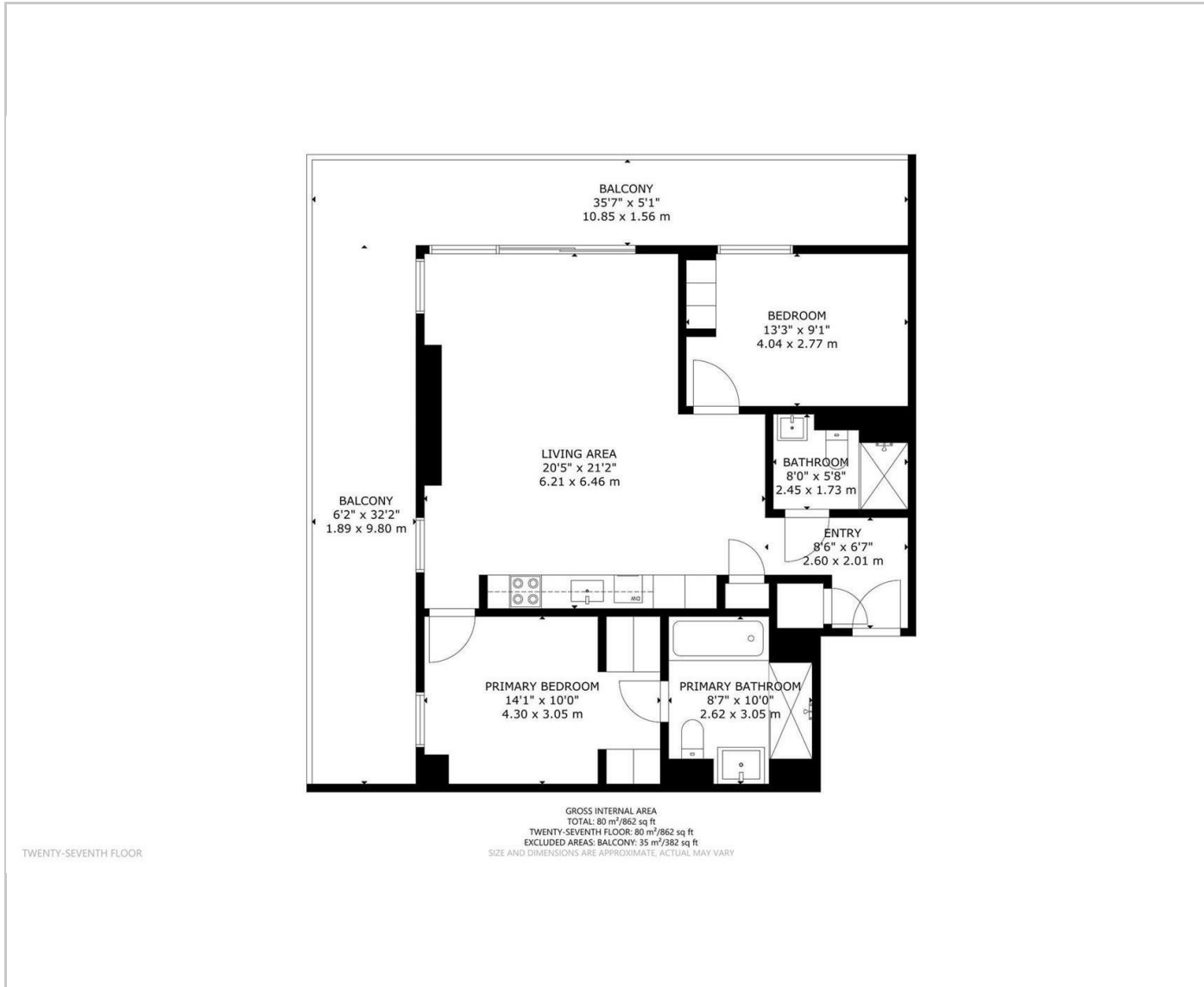
- Stylish Two Bedrooms Two Bathrooms
- Attractive open plan reception with space to dine and work
- Chic open plan kitchen with integrated appliances and emerald finishes
- Residents Gym / Pool / Private Cinema
- Luxurious shower room and main en suite bathroom
- Exclusive sky lounge and cocktail bar in the building
- Moments away from Jubilee Line
- Private Balcony
- Underground
- Garden Pack worth £50 K

Situation

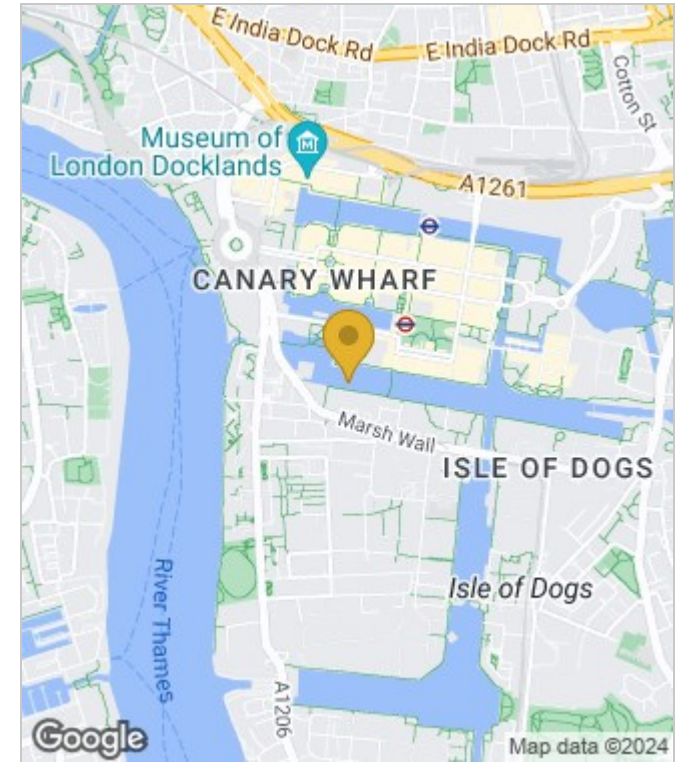


Council Tax Band: F

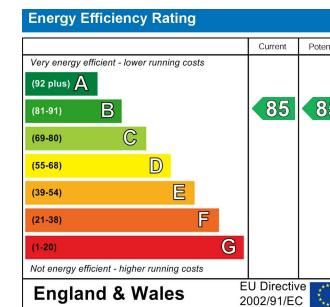
Floor Plans



Area Map



Energy Performance Graph



These particulars, whilst believed to be accurate are set out as a general outline only for guidance and do not constitute any part of an offer or contract. Intending purchasers should not rely on them as statements of representation of fact, but must satisfy themselves by inspection or otherwise as to their accuracy. No person in this firm's employment has the authority to make or give any representation or warranty in respect of the property.