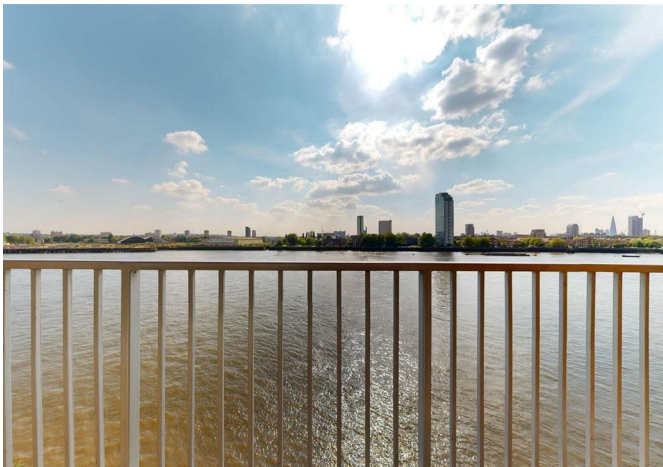




Homer Drive, London, E14 3UQ

£2,500 Per month



Homer Drive, London, E14 3UQ

£2,500 Per month

LONG LET. Lovely tow bedrooms, 2 bathrooms in Neptune Court. The property enjoys two large double rooms, 2 bathrooms and a private balcony with amazing river views

Set close to local amenities & a short walk away from Mudchute DLR Station for quick access to Canary Wharf and Central London. A bus stop is located right outside the development, providing regular 24/7 service to Canary Wharf.

Key Features

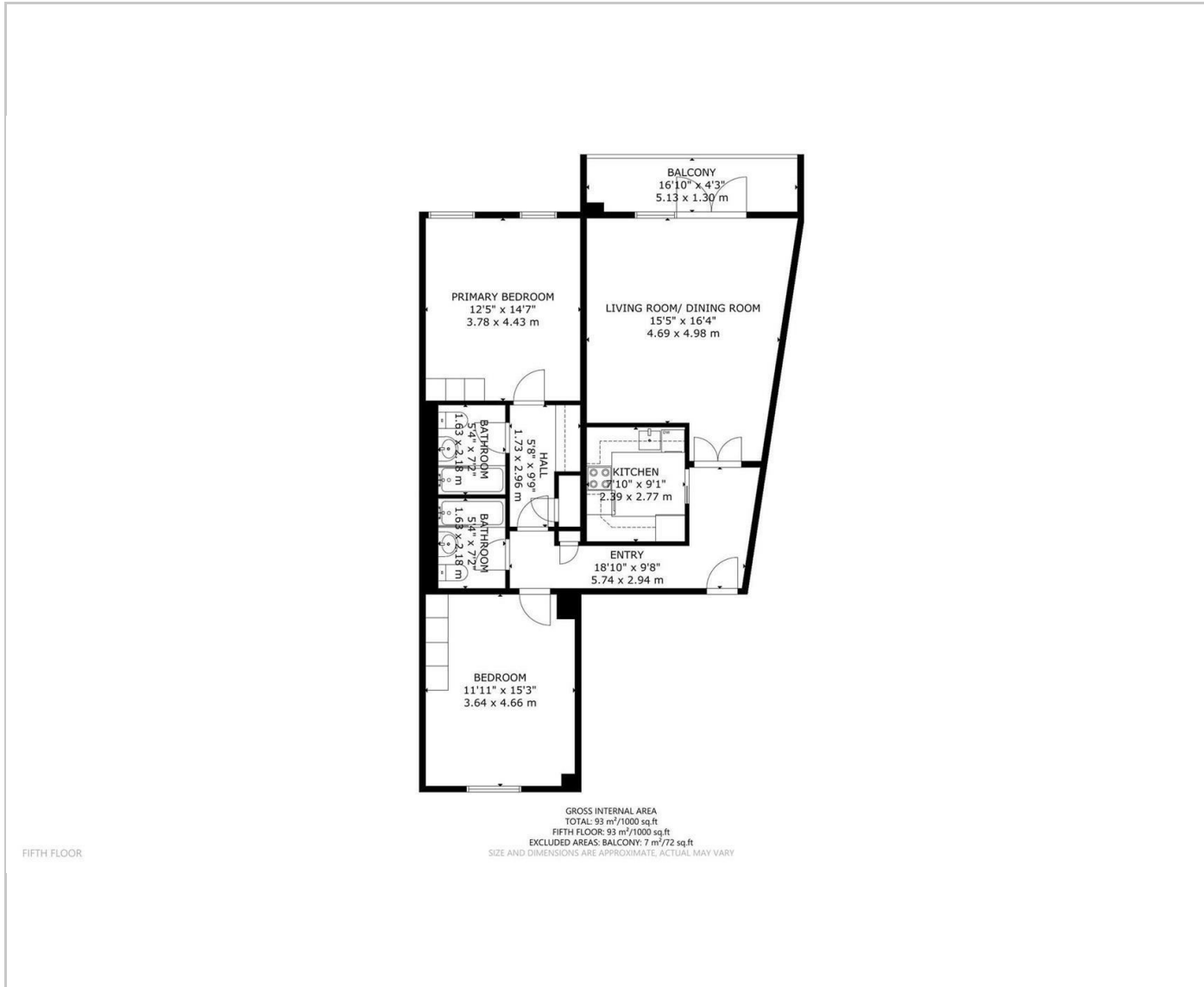
- Large two bedrooms, two bathrooms
- River views
- 24/7 Concierge
- Pool
- Gym
- Private balcony
- en- suite
- Close to local amenities and transport links
- London eye views

Situation

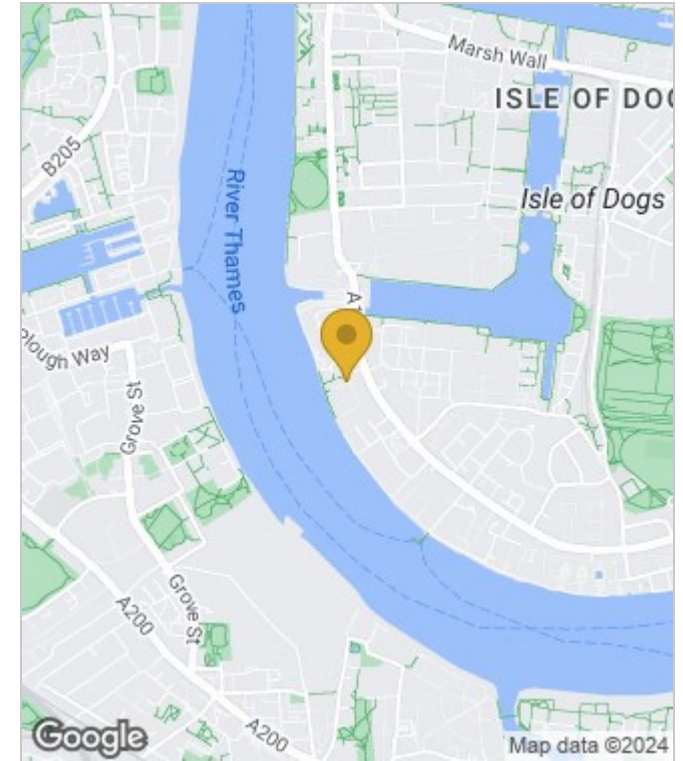


Council Tax Band: F

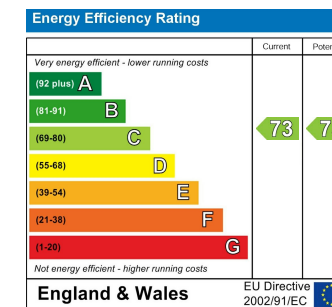
Floor Plans



Area Map



Energy Performance Graph



These particulars, whilst believed to be accurate are set out as a general outline only for guidance and do not constitute any part of an offer or contract. Intending purchasers should not rely on them as statements of representation of fact, but must satisfy themselves by inspection or otherwise as to their accuracy. No person in this firm's employment has the authority to make or give any representation or warranty in respect of the property.