



BARRAIN
LONDON

LANDMARK PINNACLE



10 Marsh Wall, London, E14 9GU

£620,000



10 Marsh Wall, London, E14 9GU

£620,000

Located at 10 Marsh Wall in the heart of Canary Wharf, this stylish one bedroom apartment in Western Europe's tallest residential tower enjoys commanding views over East London. The new owners will appreciate the cosy enclosed 'winter garden' with Juliet balcony, perfect for relaxing whilst looking out across the City. The apartment features, also, a large reception, a double bedroom, and modern kitchen and bathroom.

In-building amenities add further luxury to this property including a gym, a private cinema, and a roof terrace on the 75th floor.

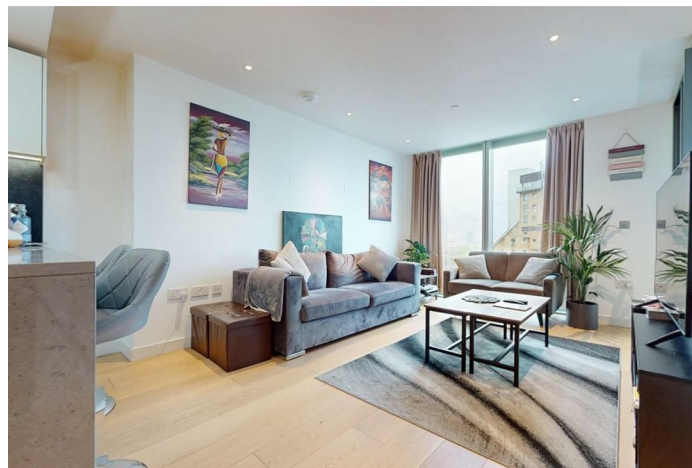
Minutes from Canary Wharf underground station and Heron's Quays DLR, you will enjoy convenience and accessibility to all that Greater London has to offer. And on your doorstep, too, there is a great offer, whether its a cultural destination, a food experience, or great shopping.

Whether you're looking to explore the vibrant city life or enjoy a peaceful evening by the river Thames, this property provides the perfect base for your adventures. This is a great opportunity for buyers who want it all.

Description



Situation

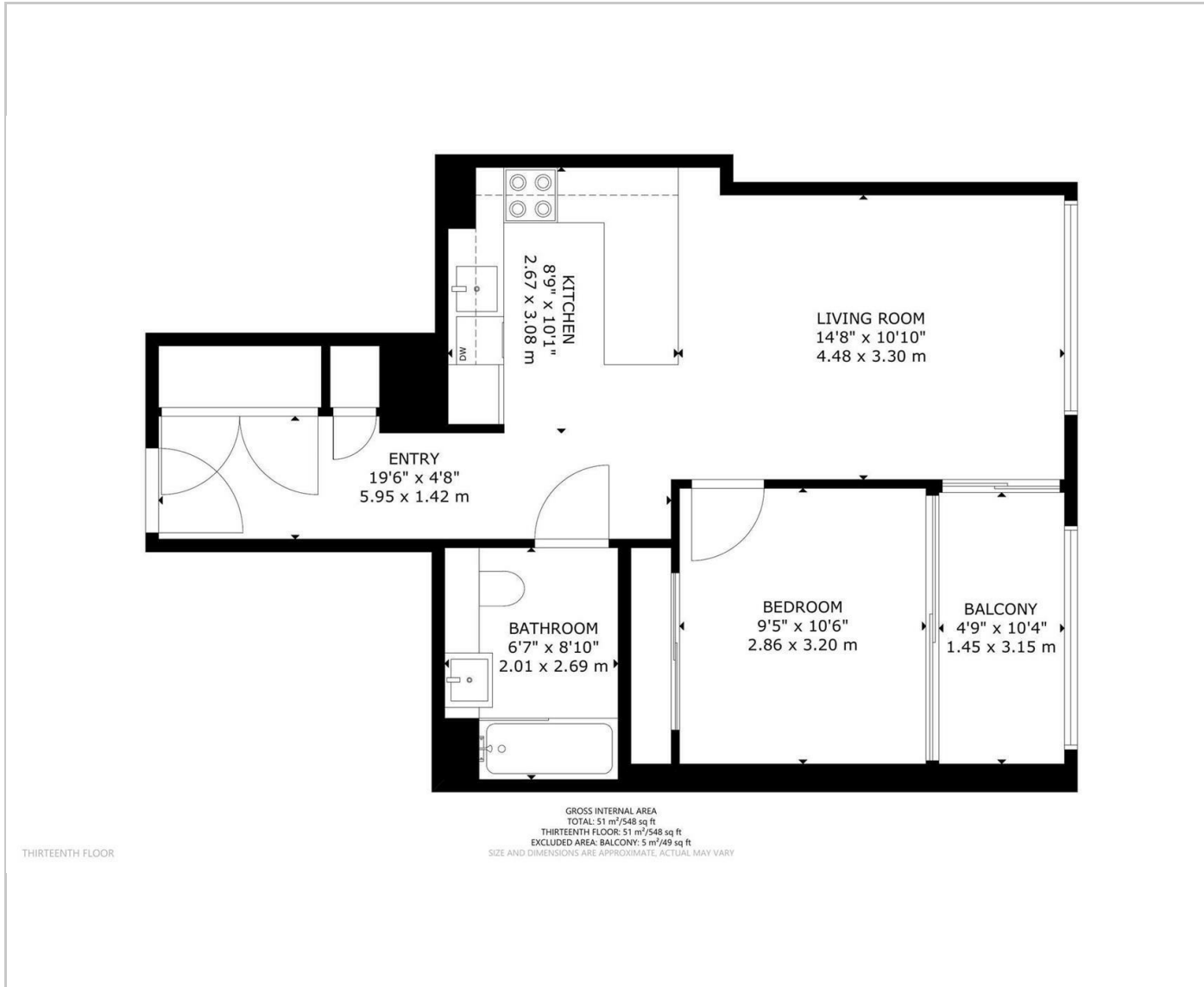


null

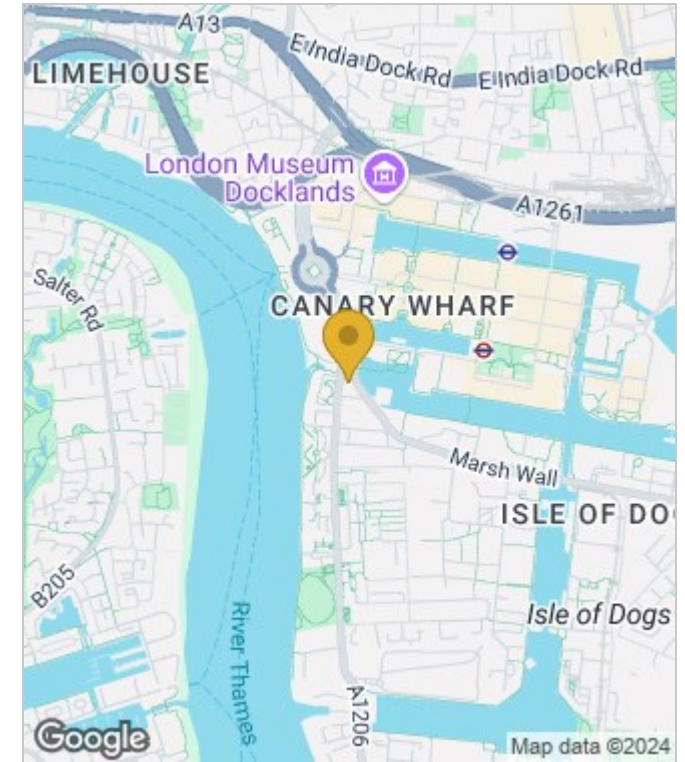
Council Tax Band: E

Available:

Floor Plans



Area Map



Energy Performance Graph

Energy Efficiency Rating		Current	Potential
Very energy efficient - lower running costs			
(92 plus) A			
(81-91) B			
(69-80) C			
(55-68) D			
(39-54) E			
(21-38) F			
(1-20) G			
Not energy efficient - higher running costs			
England & Wales	EU Directive 2002/91/EC		

These particulars, whilst believed to be accurate are set out as a general outline only for guidance and do not constitute any part of an offer or contract. Intending purchasers should not rely on them as statements of representation of fact, but must satisfy themselves by inspection or otherwise as to their accuracy. No person in this firm's employment has the authority to make or give any representation or warranty in respect of the property.