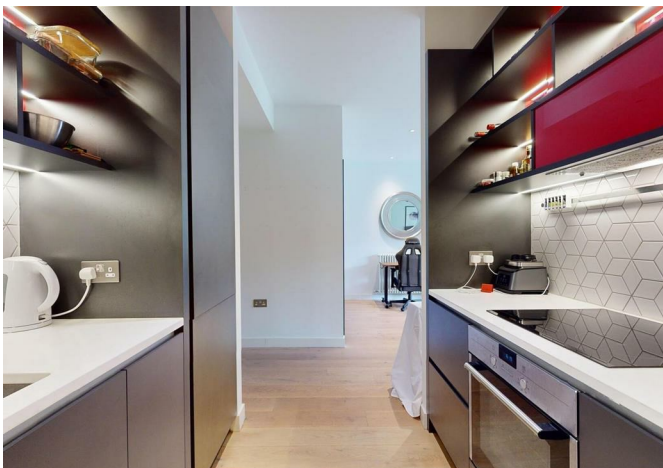




47 Hope Street, London, E14 0QG

Guide price **£395,000**



47 Hope Street, London, E14 0QG

Guide price £395,000

One of a kind 546 sq ft , stunning studio flat in the luxurious London City Island development in E14. this unit comprises a spacious living area with with open plan kitchen and a private massive terrace.

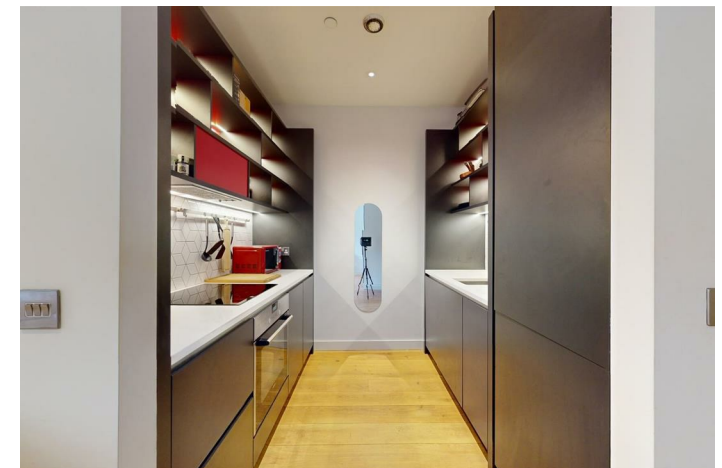
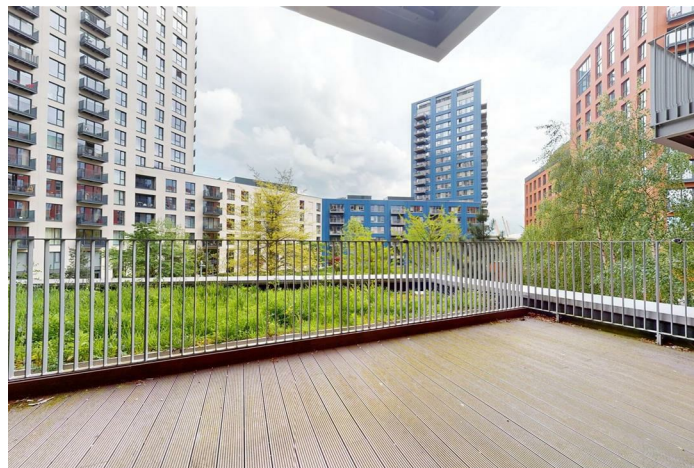
Residents will have access to the exclusive City Island Social club, with membership comes access to a range of stylishly designed private facilities such as Gym, Pool and Private cinema.

London City Island enjoys a great location with an easy access to the Underground station and DLR as well as all the local amenities.

Key Features

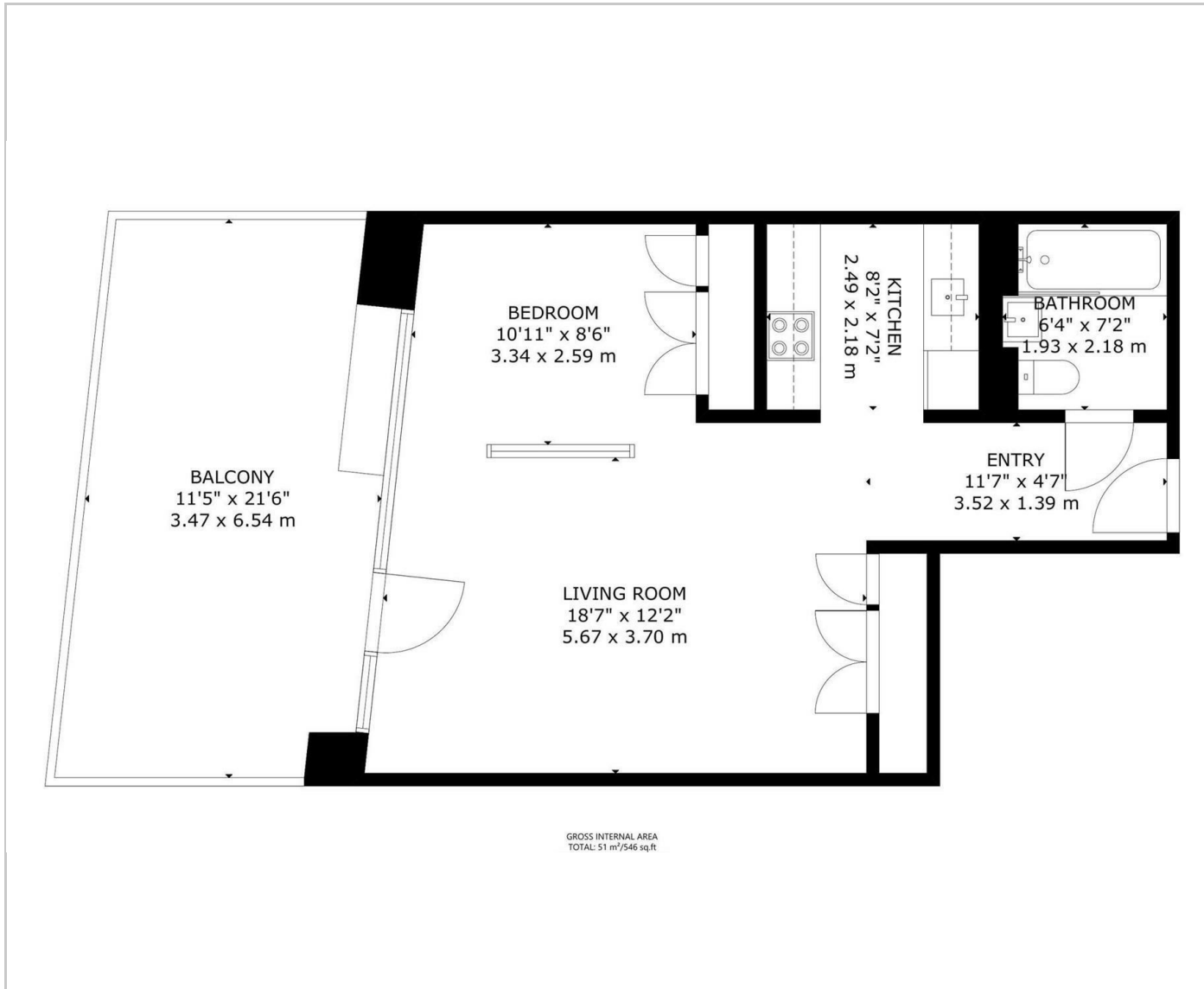
- Unique and Large Studio Flat - 546 sq ft
- 24/7 Concierge
- Pool / Gym . Private Cinema
- Access to Jubilee Line and DLR
- Close to Local Amenities
- 999 years lease
- Generous size terrace
- Bathtub
- Double side stylish kitchen
- High Rental Yield

Situation

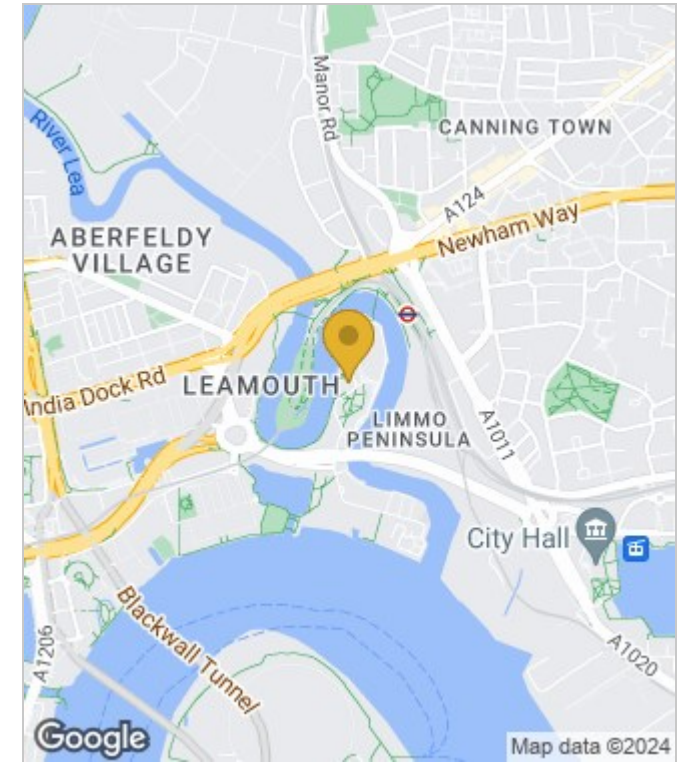


Council Tax Band: D

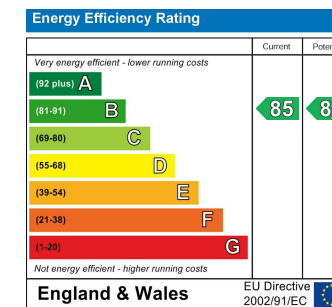
Floor Plans



Area Map



Energy Performance Graph



These particulars, whilst believed to be accurate are set out as a general outline only for guidance and do not constitute any part of an offer or contract. Intending purchasers should not rely on them as statements of representation of fact, but must satisfy themselves by inspection or otherwise as to their accuracy. No person in this firm's employment has the authority to make or give any representation or warranty in respect of the property.