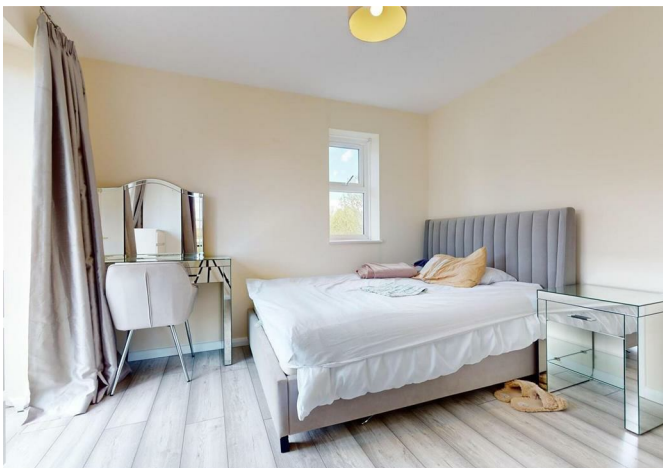




Stoneyard Lane, London, E14 0BY

£2,200 Per month



Stoneyard Lane, London, E14 0BY

£2,200 Per month

LONG LET - NEW REFURBISHED

Beautiful two bedrooms apartment located in the heart of Poplar, just a short walk away from Canary Wharf. This top floor property is perfect for those looking for a convenient and accessible location, with both the Poplar DLR and Canary Wharf Elizabeth and Jubilee lines.

Quietly tucked away within this leafy development, the property comes with a Share of Freehold and features two double bedrooms, a family bathroom, separate kitchen and a spacious reception room with access to a secure gated parking space.

Key Features

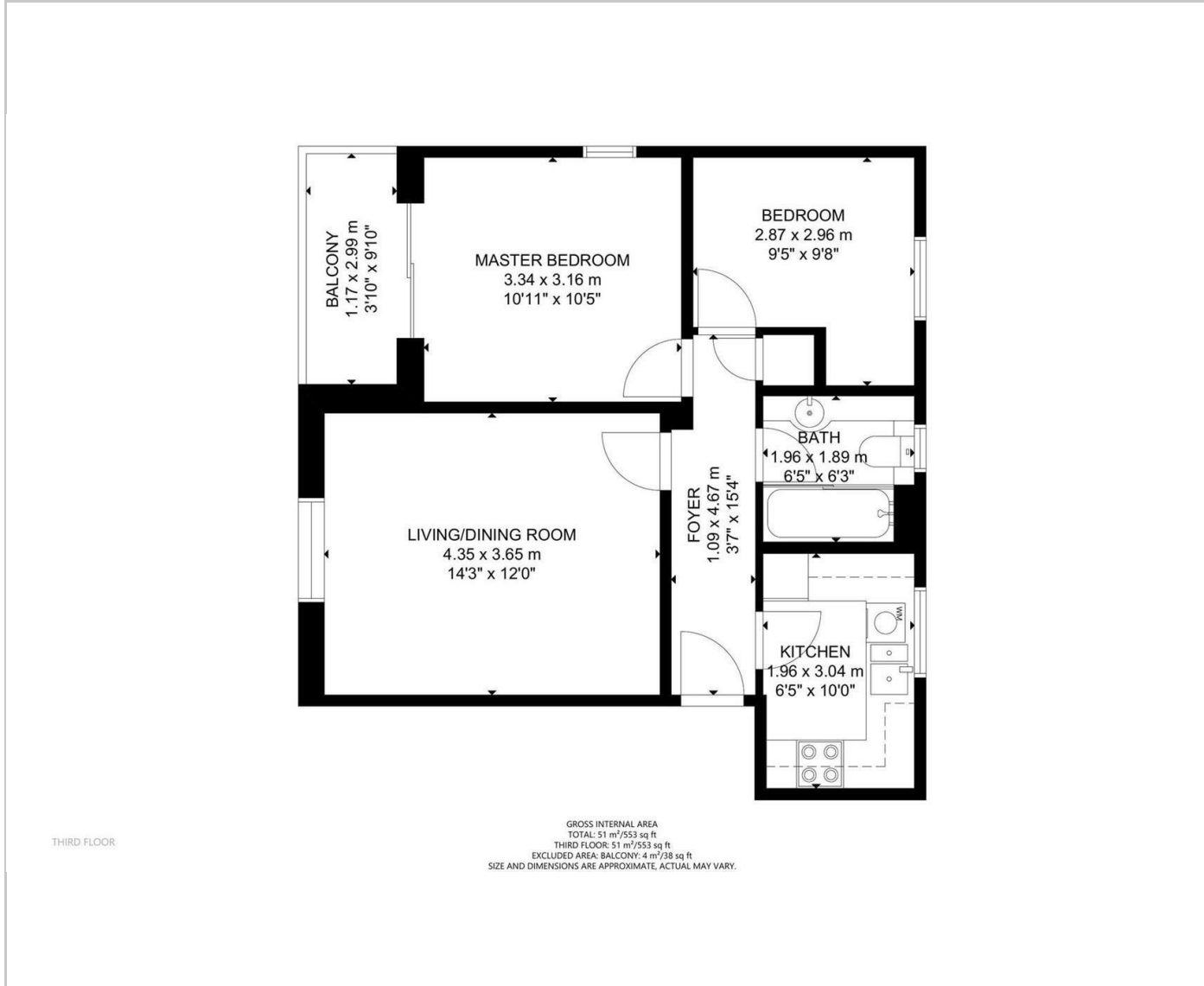
- Private Gated Development
- Newly Refurbished
- Walking distance to Canary Wharf
- Secured Parking
- Great Investment
- Close to the Elizabeth Line and Jubilee line
- Close to local amenities
- Top Floor
- Loft Storage space

Situation

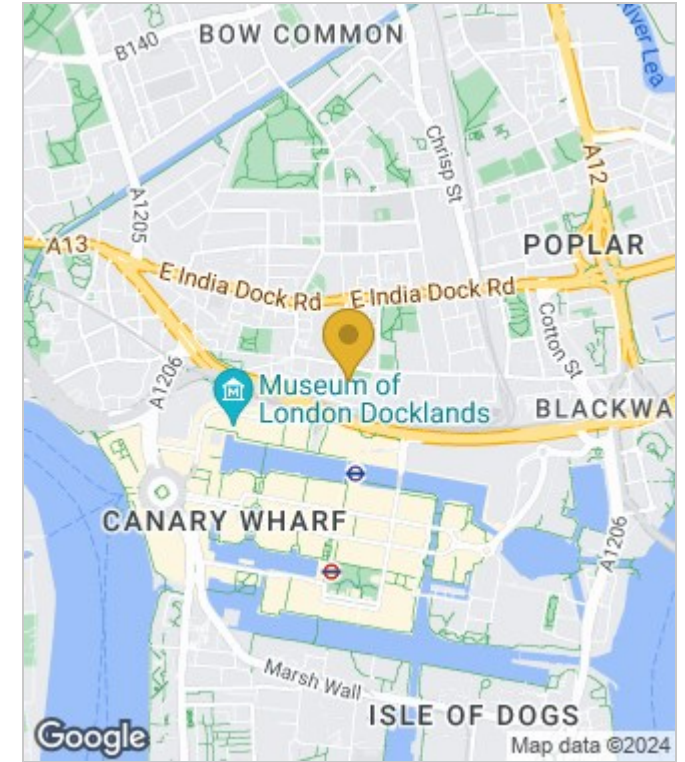


Council Tax Band: D

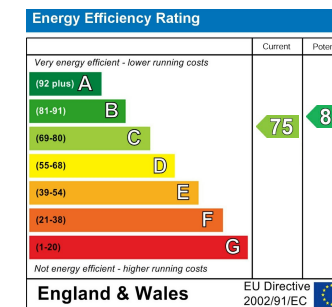
Floor Plans



Area Map



Energy Performance Graph



These particulars, whilst believed to be accurate are set out as a general outline only for guidance and do not constitute any part of an offer or contract. Intending purchasers should not rely on them as statements of representation of fact, but must satisfy themselves by inspection or otherwise as to their accuracy. No person in this firm's employment has the authority to make or give any representation or warranty in respect of the property.