

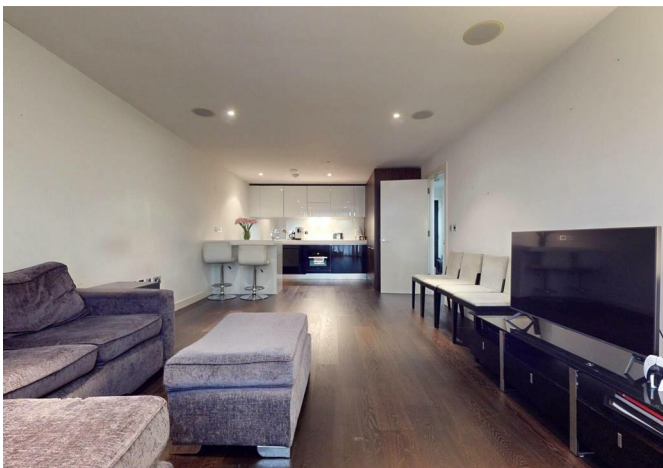


BARRAIN
LONDON



2 Gatliff Road, London, SW1W 8DT

£725,000



2 Gatliff Road, London, SW1W 8DT

£725,000

Introducing this very spacious one bedroom apartment within the Moore House building of the exclusive Grosvenor Waterside development in SW1.

Space, style and refinement are on display here at every point, beginning in the elegant lobby. The modern open plan layout of the flat includes a large reception area and fully integrated kitchen provide a good balance with a large and bright bedroom with extra storage space.

This luxury property is located in one of London's finest neighbourhoods just a stones throw from the Thames and only a ten minute walk to Sloane Square station (District Line). In addition to the convenience of having the exclusive shops and restaurants of Chelsea on your doorstep, the property features a 24/7 concierge with Spa and Gym access for the residents,

Exceptional luxury and value. Please call to arrange your private viewing.

Description



Situation



null

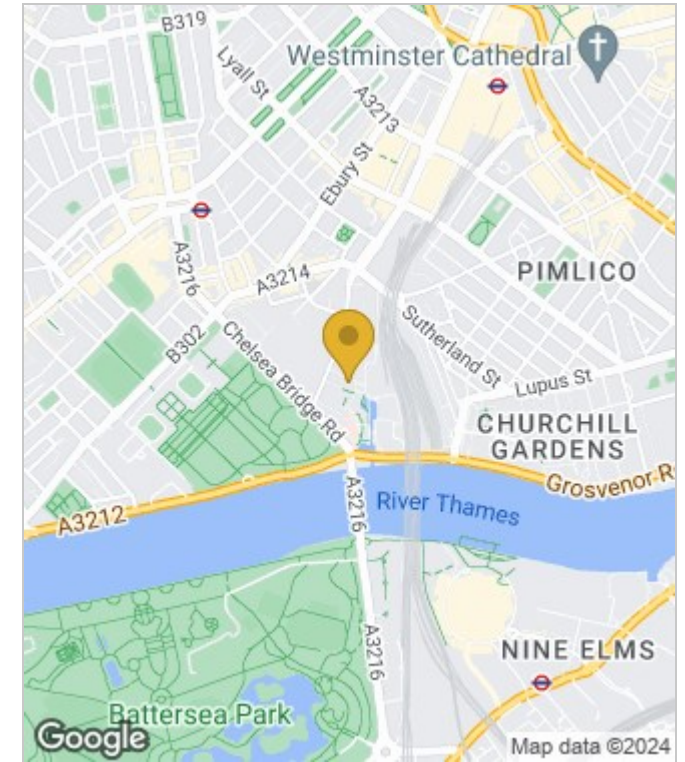
Council Tax Band: E

Available:

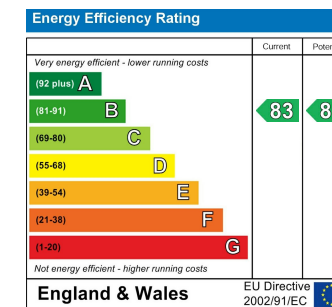
Floor Plans



Area Map



Energy Performance Graph



These particulars, whilst believed to be accurate are set out as a general outline only for guidance and do not constitute any part of an offer or contract. Intending purchasers should not rely on them as statements of representation of fact, but must satisfy themselves by inspection or otherwise as to their accuracy. No person in this firm's employment has the authority to make or give any representation or warranty in respect of the property.