



36 Hanover Avenue, London, E16 1DY
£2,200 Per month



36 Hanover Avenue, London, E16 1DY

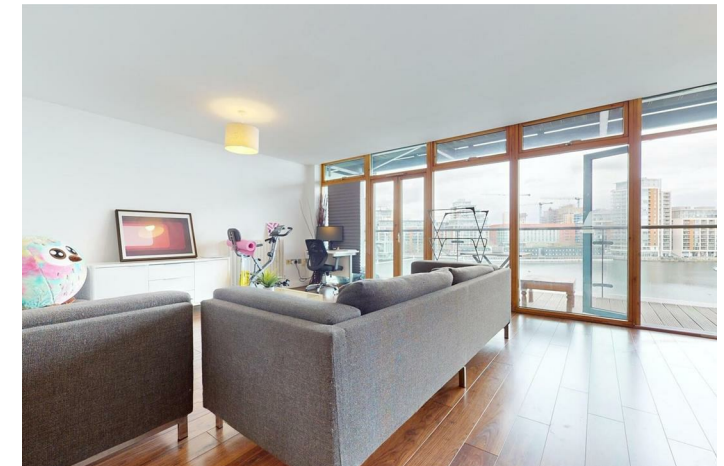
£2,200 Per month

Barrain Property Advisors are delighted to offer this stunning two bedroom apartment on a high floor, set within a gated development. The Property features two bedrooms, two bathrooms, a very large lounge with a lush private terrace over the stunning views of the Royal Dock.

Key Features

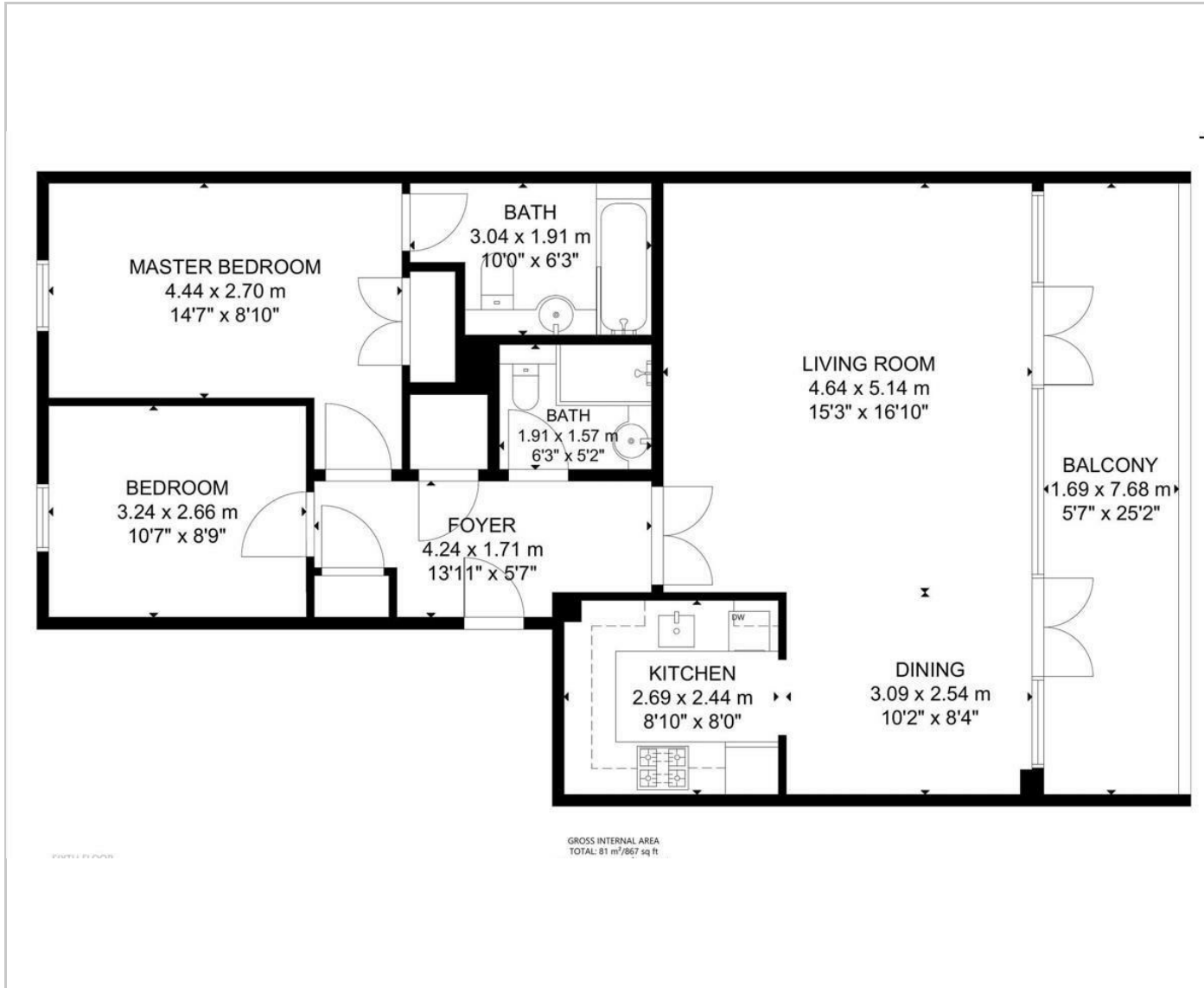
- Large 2 bedrooms, 2 bathrooms
- Private Terrace With Views Over The Royal Docks
- Underground parking
- Porter
- Gated Development
- Close to Local Amenties
- Walking distance to London Excel
- Within walking distance to the new Elizabeth Line
- EPC : B

Situation

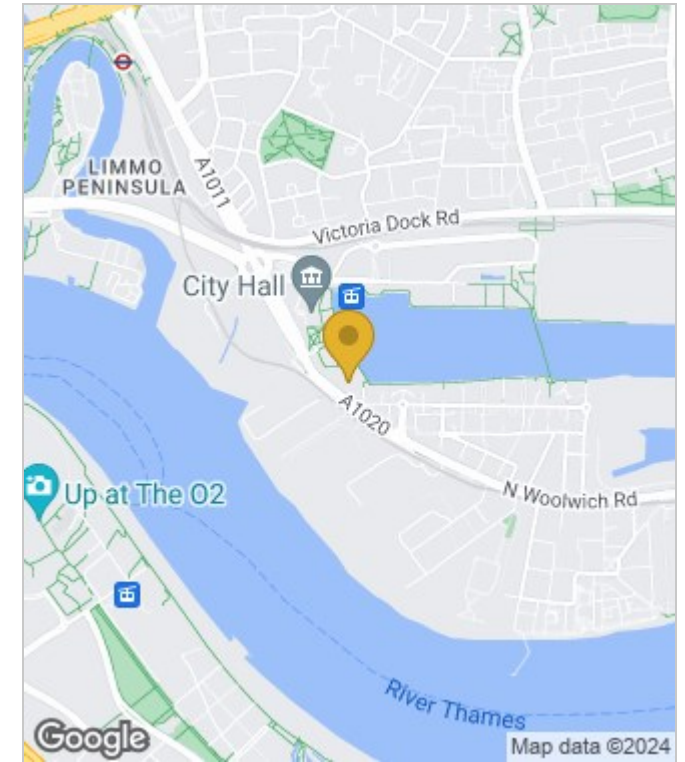


Council Tax Band: E

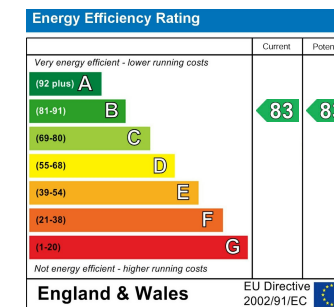
Floor Plans



Area Map



Energy Performance Graph



These particulars, whilst believed to be accurate are set out as a general outline only for guidance and do not constitute any part of an offer or contract. Intending purchasers should not rely on them as statements of representation of fact, but must satisfy themselves by inspection or otherwise as to their accuracy. No person in this firm's employment has the authority to make or give any representation or warranty in respect of the property.