



1 Wards Place, London, E14 9DY

£2,500 Per month



1 Wards Place, London, E14 9DY

£2,500 Per month

Luxury studio apartment set out in the iconic Wards development in the heart of Canary Wharf. The apartment presents modern and sleek interiors and great views over Canary wharf and the Dock.

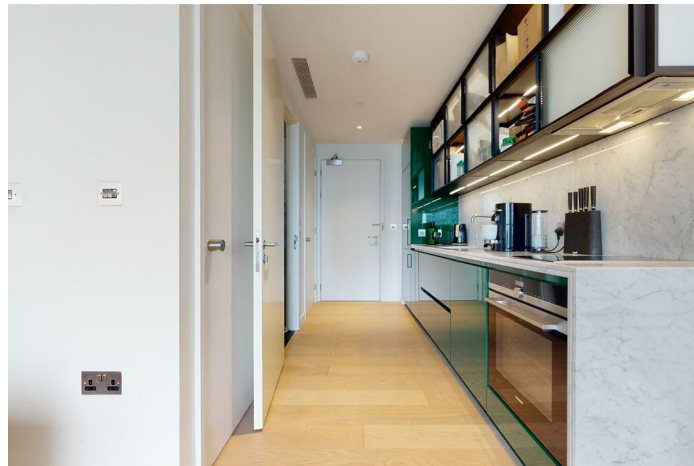
Ideally located in the center of Canary Wharf, Wards London creates a perfect combination of state-of-the-art city living and verdant urban oasis. The development features 24/7 concierge service and residents have exclusive access to top-of-the-range facilities including a state of art gym, swimming pool, cinema, sky bar and lounge located on the 53rd floor, offering breath-taking views across the capital.

Wards is situated minutes away from Canary Wharf Underground / DLR Station for quick connections to Central London.

Description



Situation

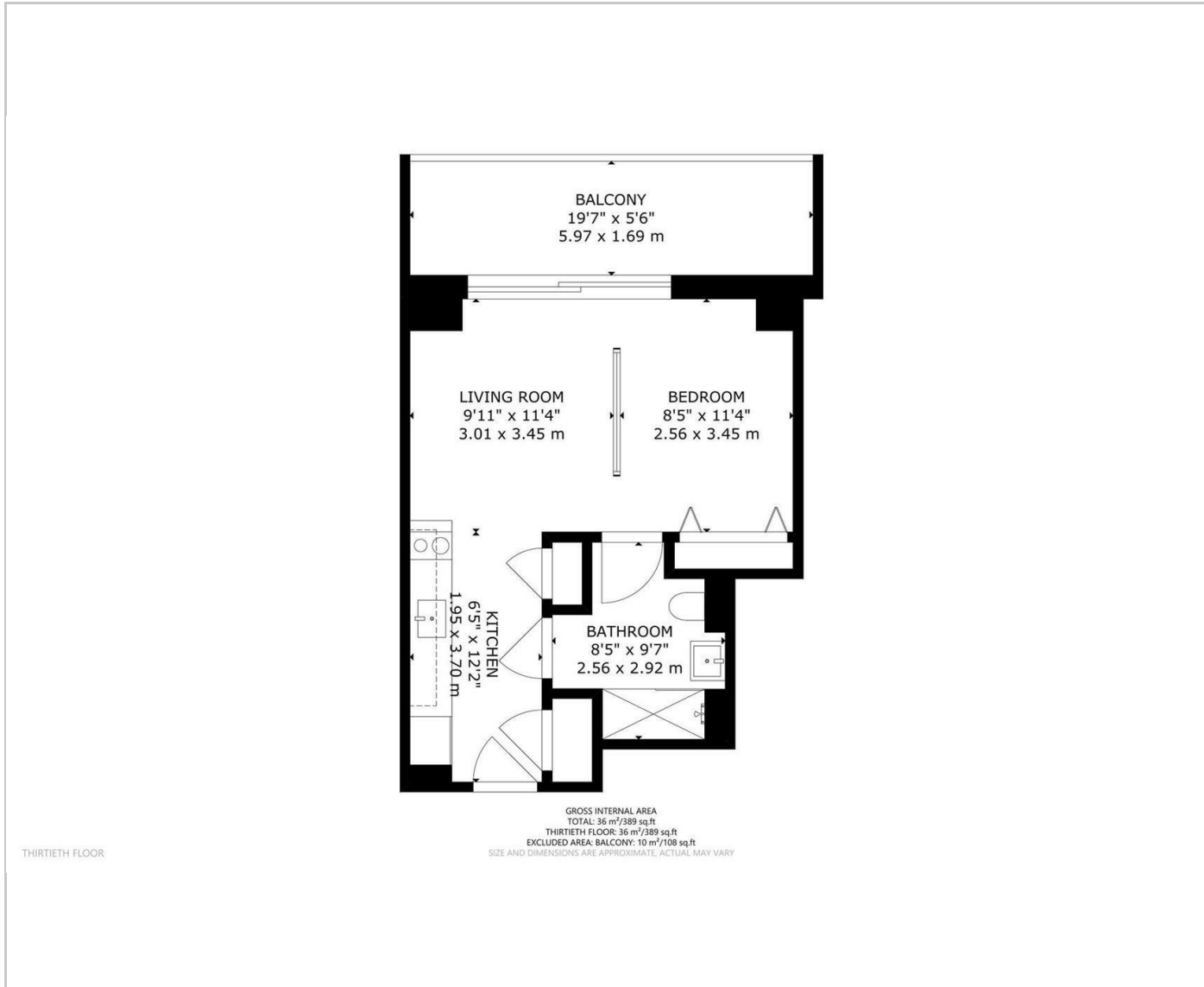


Furnished

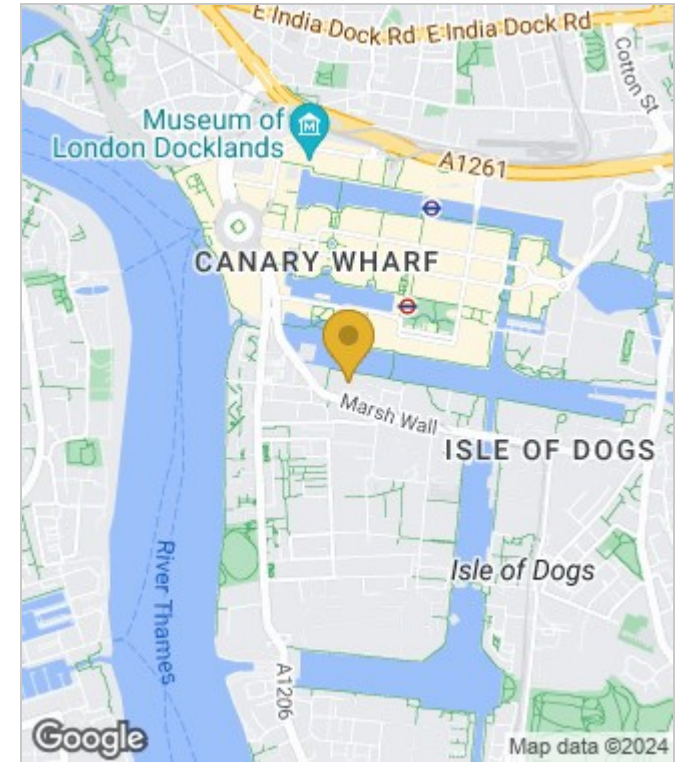
Council Tax Band: E

Available: 10th April 2024

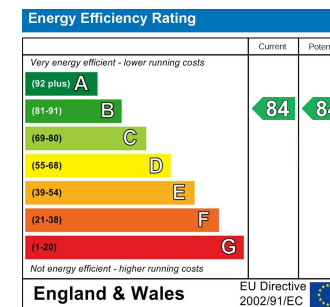
Floor Plans



Area Map



Energy Performance Graph



These particulars, whilst believed to be accurate are set out as a general outline only for guidance and do not constitute any part of an offer or contract. Intending purchasers should not rely on them as statements of representation of fact, but must satisfy themselves by inspection or otherwise as to their accuracy. No person in this firm's employment has the authority to make or give any representation or warranty in respect of the property.