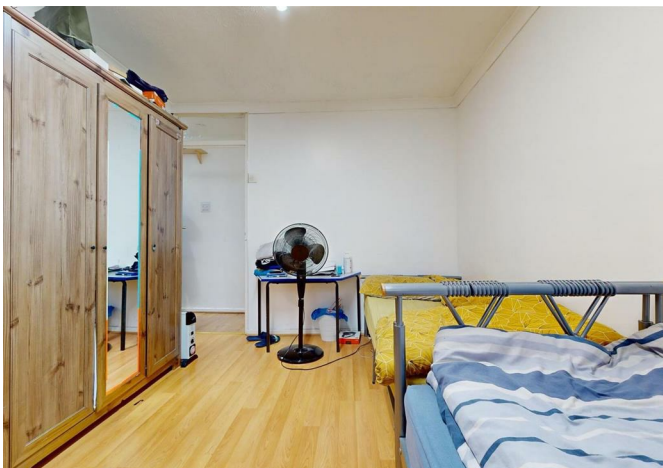




Cleves Road, London, E6 1QF
Guide price **£550,000**



Cleves Road, London, E6 1QF

Guide price £550,000

Freehold - Large 3 bedrooms Mid- terrace freehold house presents a superb location near Upton Park Station

The property enjoys 3 generously sized rooms, 2 Bathrooms / toilets, newly renovated kitchen and a great size private garden.

Key Features

- Large Three Bedrooms
- Free Hold
- Drive Way Fits 2 Cars
- Great Size Private Garden
- Two Reception Rooms
- Close to Local Amenities
- Separate kitchen with integrated fixtures and fittings
- Renovated Kitchen
- 1220 sqf
- EPC: C - Council Tax: C

Situation

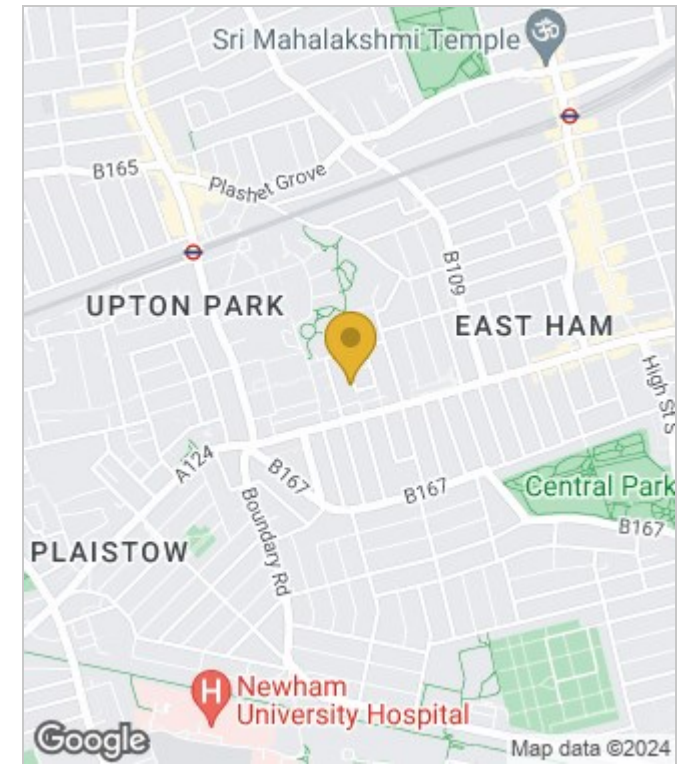


Council Tax Band: C

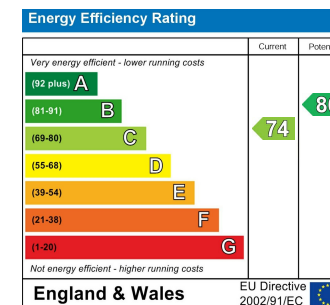
Floor Plans



Area Map



Energy Performance Graph



These particulars, whilst believed to be accurate are set out as a general outline only for guidance and do not constitute any part of an offer or contract. Intending purchasers should not rely on them as statements of representation of fact, but must satisfy themselves by inspection or otherwise as to their accuracy. No person in this firm's employment has the authority to make or give any representation or warranty in respect of the property.