



Garvary Road, London, E16 3GZ
£2,800 Per month



Garvary Road, London, E16 3GZ

£2,800 Per month

SHORT LET - TWO BEDROOMS TO RENT. All bills inclusive

Manchester Court is under half a mile to Custom House DLR Station which offers links to The City and Canary Wharf. The A13 is also under half a mile away.

Description

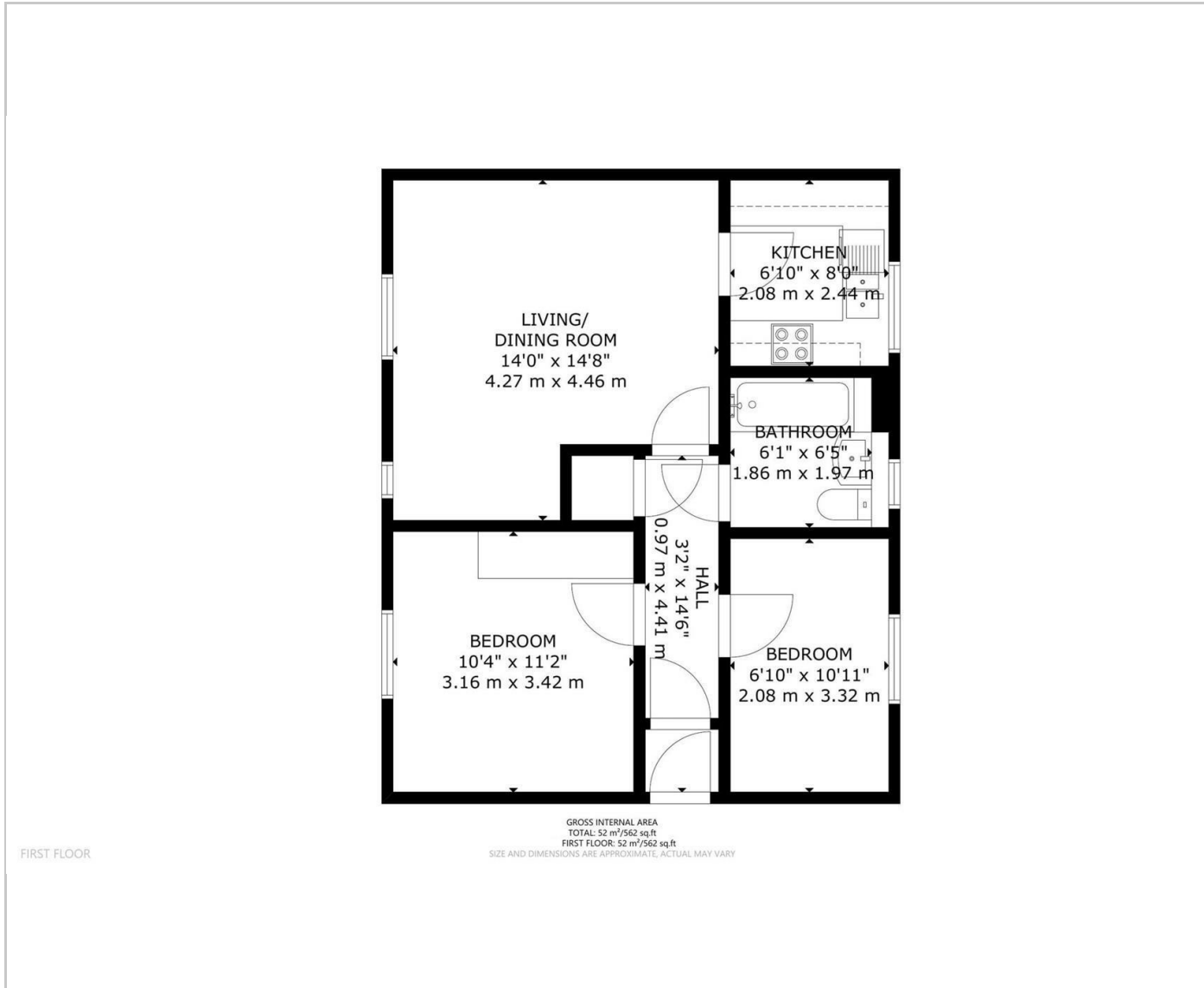


Situation

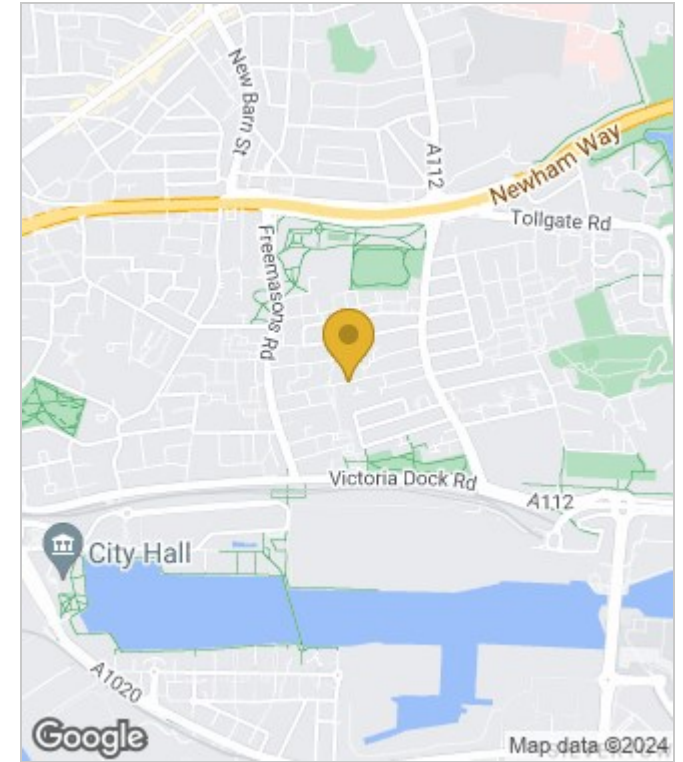


Furnished
Council Tax Band: C
Available: 25th April 2024

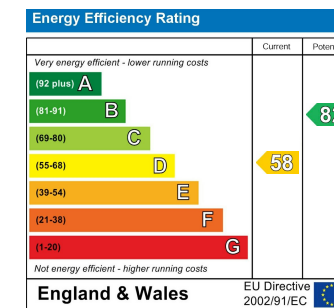
Floor Plans



Area Map



Energy Performance Graph



These particulars, whilst believed to be accurate are set out as a general outline only for guidance and do not constitute any part of an offer or contract. Intending purchasers should not rely on them as statements of representation of fact, but must satisfy themselves by inspection or otherwise as to their accuracy. No person in this firm's employment has the authority to make or give any representation or warranty in respect of the property.