



Argles Close, Greenhithe, DA9 9PA
Guide price £425,000 - £450,000 Freehold



Guide Price £425,000 - £450,000. The Homes Group are delighted to offer to the market this beautifully presented three bedroom semi-detached family home located on the popular Worcester Park development in Greenhithe which is situated within close proximity of Greenhithe Station and Bluewater.

The accommodation comprises of a 14'8 x 11'6 living room, a 14'8 x 13' kitchen/diner which is open to the 9'10 x 7' conservatory style extension. There are three bedrooms and a family bathroom upstairs and a 40' garden to the rear. The property comes with a 15'8 x 8' garage with a driveway for two cars to the front of the garage.

Entrance Hall

Living Room

14'8 x 11'6 (4.47m x 3.51m)

Kitchen/Diner

14'8 x 13' (4.47m x 3.96m)

Conservatory

9'10 x 7' (3.00m x 2.13m)

Landing

Bedroom One

11'9 to wardrobes x 8'9 (3.58m to wardrobes x 2.67m)

Bedroom Two

11'4 x 8'4 (3.45m x 2.54m)

Bedroom Three

8'5 x 5'9 (2.57m x 1.75m)

Bathroom

Rear Garden

40' (12.19m)

Garage to Side

15'8 x 8' (4.78m x 2.44m)

Driveway to Front of Garage

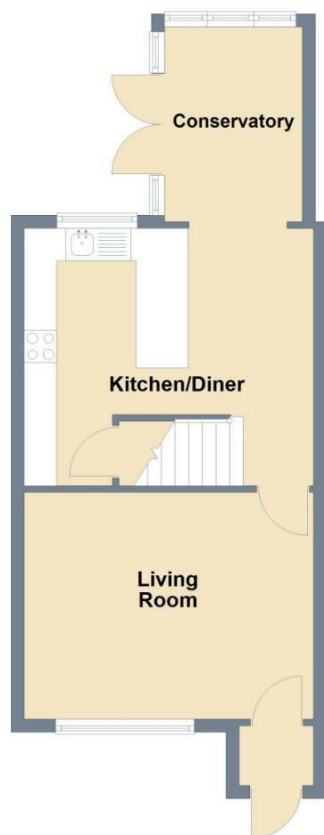
Tenure - Freehold

Council Tax - Band C





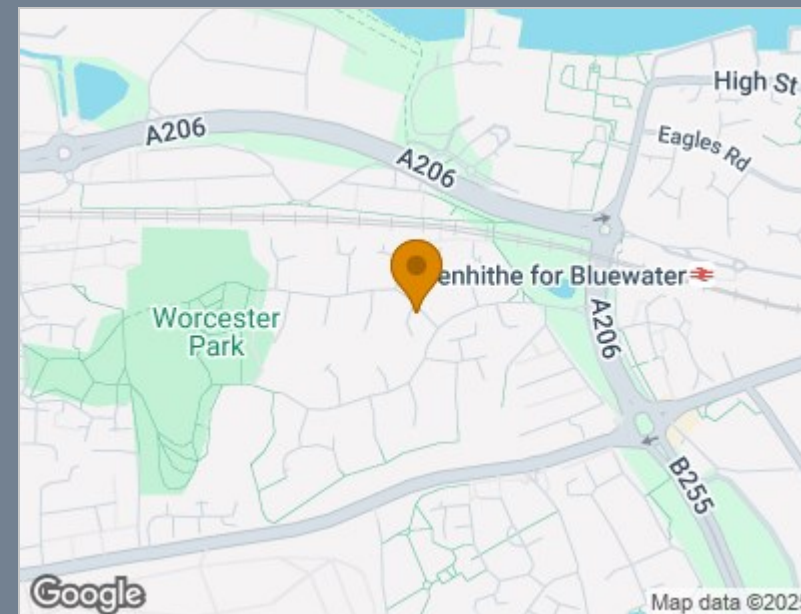
Ground Floor
Approx. 41.5 sq. metres (447.2 sq. feet)



First Floor
Approx. 33.8 sq. metres (363.5 sq. feet)



Total area: approx. 75.3 sq. metres (810.7 sq. feet)



Energy Efficiency Rating		
	Current	Potential
Very energy efficient - lower running costs		
(92 plus) A		
(81-91) B		
(69-80) C		
(55-68) D		
(39-54) E		
(21-38) F		
(1-20) G		
Not energy efficient - higher running costs		
England & Wales	EU Directive 2002/91/EC	

Viewing

Please contact The Homes Group Office on 01322 875000 if you wish to arrange a viewing appointment for this property or require further information.

These particulars, whilst believed to be accurate are set out as a general outline only for guidance and do not constitute any part of an offer or contract. Intending purchasers should not rely on them as statements of representation of fact, but must satisfy themselves by inspection or otherwise as to their accuracy. No person in this firm's employment has the authority to make or give any representation or warranty in respect of the property.