



Charles Street, Greenhithe, DA9 9AJ
Guide price £325,000 Freehold

The Homes Group are delighted to offer to the market this larger than average two double bedroom Victorian style terraced house with parking to the rear that is located within close proximity of both Stone crossing Station and Greenhithe Station.

The accommodation comprises of an entrance hall, living room, dining room and 105 x 9'8 kitchen. On the first floor there are two bedrooms and 14' x 9'7 first floor bathroom. There is a storage cupboard and shed in the 55' rear garden and double gates leading to the rear vehicle access road.

The property is offered with no forward chain.

Entrance Hall

Living Room

11'4 x 11' (3.45m x 3.35m)

Dining Room

11'4 x 9'6 (3.45m x 2.90m)

Kitchen

10'5 x 9'8 (3.18m x 2.95m)

Landing

Bedroom One

15'6 x 11'5 (4.72m x 3.48m)

Bedroom Two

11'4 x 9'6 (3.45m x 2.90m)

First Floor Bathroom

14' x 9'7 (4.27m x 2.92m)

Rear Garden

55' (16.76m)

Tenure - Freehold

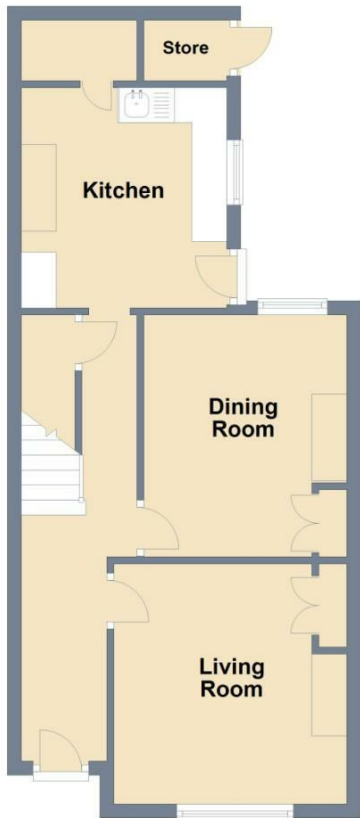
Council Tax - Band B





Ground Floor

Approx. 43.3 sq. metres (465.6 sq. feet)

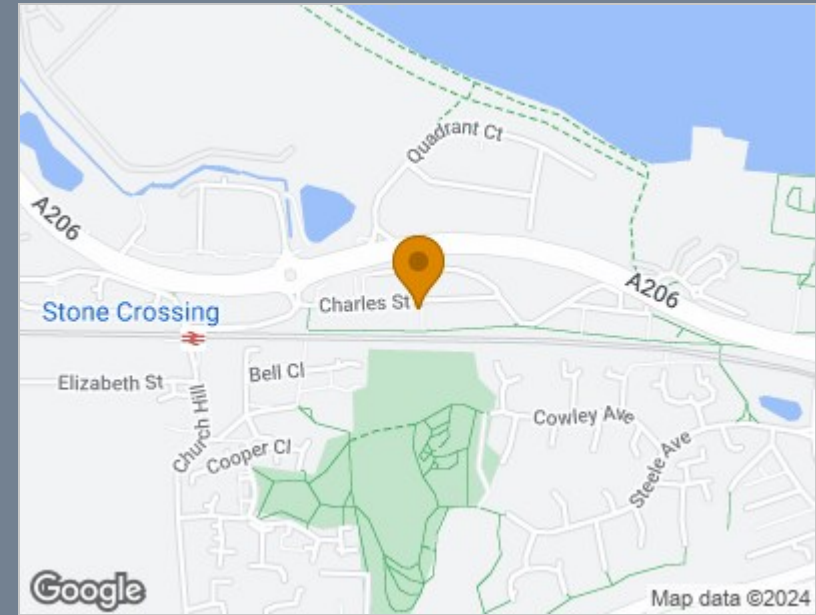


First Floor

Approx. 45.3 sq. metres (487.9 sq. feet)



Total area: approx. 88.6 sq. metres (953.5 sq. feet)



Energy Efficiency Rating		Current	Potential
Very energy efficient - lower running costs			
(92 plus) A			
(81-91) B			86
(69-80) C		69	
(55-68) D			
(39-54) E			
(21-38) F			
(1-20) G			
Not energy efficient - higher running costs			
England & Wales		EU Directive 2002/91/EC	

Viewing

Please contact The Homes Group Office on 01322 875000 if you wish to arrange a viewing appointment for this property or require further information.

These particulars, whilst believed to be accurate are set out as a general outline only for guidance and do not constitute any part of an offer or contract. Intending purchasers should not rely on them as statements of representation of fact, but must satisfy themselves by inspection or otherwise as to their accuracy. No person in this firm's employment has the authority to make or give any representation or warranty in respect of the property.