



# SLADE FARM

Manorbier | Tenby | Wales | SA70 7SJ

FINE & COUNTRY



SLADE FARM

---

# SLADE FARM

---

Slade Farm is a delightful country residence nestled in 7 acres of serene countryside, boasting a three-bedroom farmhouse, a one-bedroom annexe dubbed 'The Dovecote', and a charming three-bedroom detached cottage named 'The Swallows'. The existing planning consent provides for enhancements including a double garage, drying/utility room, and a log store at the front left of the property, along with promising prospects for converting additional outbuildings, subject to necessary permissions.

Privately tucked away, yet remarkably close to the vibrant Manorbier village, this property offers an unparalleled opportunity to immerse oneself in the richness of coastal Welsh life. Renowned for its historic castle and pristine beach, Manorbier beckons with its picturesque surroundings and a community that embodies both tranquillity and vibrancy.

The central dwelling, a three-bedroom home with origins in the 18th Century, stands as a testament to versatile living possibilities, providing an ideal setting for multigenerational families, holiday letting ventures, or a tranquil home office setup. Adjacent to it, 'The Dovecote' serves as a flexible space, with options for integration with the main house or use as a self-contained unit. Meanwhile, 'The Swallows' presents a fantastic prospect for holiday letting, promising guests a stay that is both comfortable and immersed in nature.

Positioned in this coveted area, this property promises a lifestyle steeped in natural beauty and convenience. Prospective buyers will be enamoured by the mature gardens and the abundant wildlife, with horses gracing the neighbouring fields, adding to the charm that this estate offers. Ample parking facilities further enhance the practical aspects of this home. A visit to this unique property is highly recommended to fully appreciate its potential and the manifold attractions of the Manorbier area.











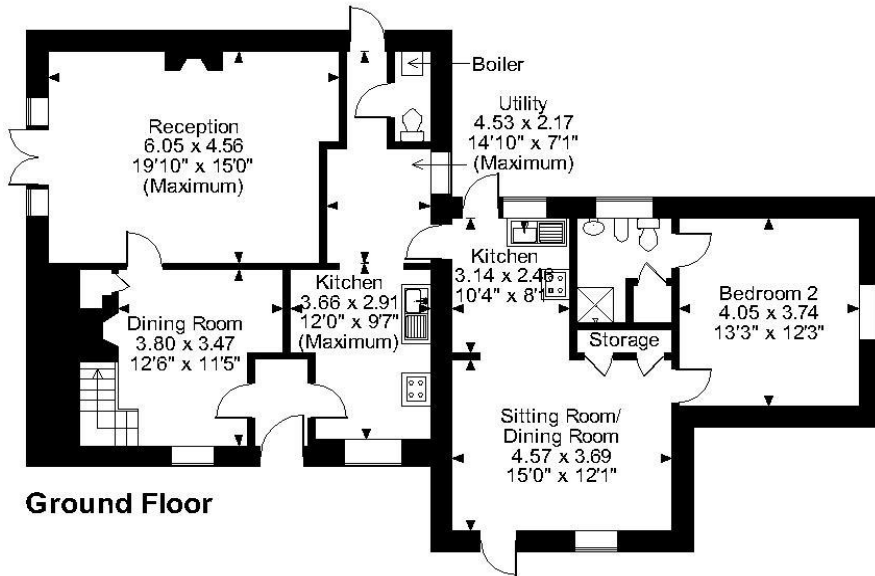
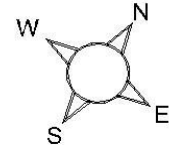




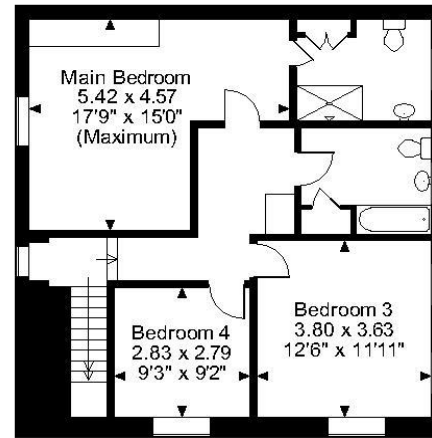




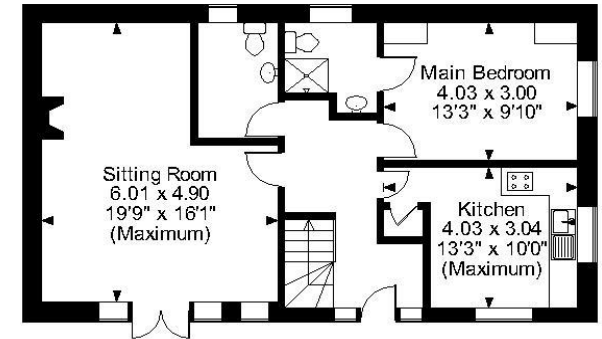
**Slade Farm, Manorbier, Tenby**  
**Approximate Gross Internal Area**  
**Main House = 1954 Sq Ft/182 Sq M**  
**Swallows = 1095 Sq Ft/102 Sq M**  
**Workshop/Outbuildings = 455 Sq Ft/42 Sq M**



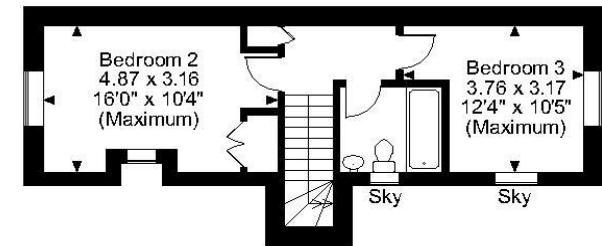
**Ground Floor**



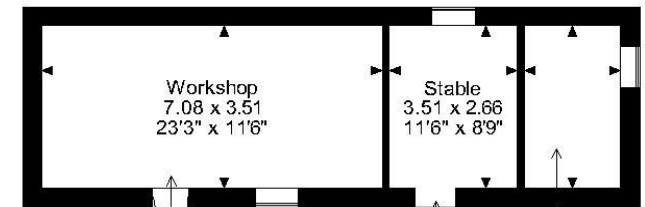
**First Floor**



**Swallows Ground Floor**



**Swallows First Floor**



**Workshop/Outbuildings**

Pig Sty  
 3.51 x 2.00  
 11'6" x 6'7"

**FOR ILLUSTRATIVE PURPOSES ONLY - NOT TO SCALE**

The position & size of doors, windows, appliances and other features are approximate only.

© ehouse. Unauthorised reproduction prohibited. Drawing ref. dig/8532036/SS





Fine & Country West Wales

The Gallery, Station Approach, Station Building, Aberystwyth, SY23 1LH

Tel: 01974 299 055 | [nigel.salmon@fineandcountry.com](mailto:nigel.salmon@fineandcountry.com)

