



GREENWICH  
PENINSULA

# PENINSULA RIVERFRONT



INTRODUCTION <sup>P.4</sup>

LOCATION <sup>P.18</sup>

THE AMENITIES <sup>P.32</sup>

THE RESIDENCES <sup>P.52</sup>

FLOOR PLANS <sup>P.72</sup>

THE TEAM <sup>P.94</sup>



# RIVERSIDE STYLE. PENINSULA SPIRIT.



'The Mermaid':  
One of six  
public art  
pieces from  
Damien Hirst  
at Greenwich  
Peninsula.



# WELCOME TO PENINSULA RIVERFRONT

Peninsula Riverfront is one of a cluster of five architecturally stunning buildings that comprise the popular Upper Riverside district of Greenwich Peninsula. Complete and already home to a thriving community, this is the first opportunity to own an apartment in this sought-after building, ready for immediate move-in.

Designed by the award-winning architects at Skidmore, Owings & Merrill, Peninsula Riverfront features a striking glass façade with cascading roof terraces, with each apartment offering views of either the Thames, London's Design District or the London skyline. With studios, one-, two-, and three-bedroom apartments and penthouses available, each space has been meticulously crafted by Knight Dragon's renowned interior design team.

As a Peninsula Riverfront resident, you'll have exclusive access to The Upper Riverside Club, offering state-of-the-art gyms, swimming pool, co-working lounges, and rooftop terraces. The development also boasts landscaped gardens and direct access to the Thames Path, ideal for a morning jog or evening stroll.

View of  
the Upper  
Riverside  
district, the  
O2 Arena and  
River Thames.



## WHERE MODERN LUXURY MEETS SERENE RIVERFRONT LIVING

Located in the dynamic area of Greenwich Peninsula, you'll have access to a rich cultural scene, including The O2 Arena, three art galleries, over 40 restaurants and bars, and 60 designer brands within the O2 shopping outlet, including Calvin Klein, Nike, Adidas, Tommy Hilfiger, and Radley. For a touch of luxury, the five-star InterContinental London at The O2 offers a world-class spa, fine dining, and exceptional restaurants right at your doorstep.

The Peninsula is also home to the world's largest publicly accessible collection of Damien Hirst's works, alongside iconic installations by renowned artists such as Anthony Gormley, Allen Jones, and Morag Myerscough.

With excellent transport links, including the Jubilee Line and riverboat services, you'll enjoy seamless connectivity to everything London has to offer.



# EXPERIENCE LONDON AT ITS BEST

## TOP 10 REASONS TO CHOOSE PENINSULA RIVERFRONT

01.

### ZONE 2 CONNECTIVITY

Live just a 2-minute walk from North Greenwich Jubilee Line station, offering quick access to Canary Wharf, the City, and the West End.



02.

### A HUB FOR EDUCATION

Access London's premier education with ease with ten of the top London universities within 35 minutes of your door and over 400 schools and nurseries in the borough providing excellent options for every stage of learning.



03.

### CAPITAL GROWTH

Over the past 5 years, Greenwich has reached an average of 15% Capital Growth, compared to an average of only 11.9% for the same period for London.\*



04.

### STRONG RENTAL DEMAND

Greenwich Peninsula has seen 37% rental growth over the past five years, with demand consistently outpacing supply. Peninsula Riverfront presents a rare opportunity to purchase an income-generating apartment, delivering rental yields of up to 6.4% from the moment of completion.



05.

### EXCEPTIONAL AMENITIES

Access a wide range of resident amenities at The Upper Riverside Club, including an indoor swimming pool, co-working lounges, cinema, private dining room, multiple gyms, and furnished roof terraces.

\*Source: Office of National Statistics – data from Oct 19 - Oct 24  
Rental data based on established rental values currently being achieved at Peninsula Riverfront and across the Peninsula.





## 06. DOORSTEP LIFESTYLE

Experience a more convenient lifestyle with a variety of cafés, restaurants, bars, grocery stores, and high-end retail just steps away from your front door.

## 09. GREEN SPACE

Access 48 acres of open, green space, including the 2.8 acre Central Park at the heart of the Peninsula, plus 1.6 miles of riverside.



## 07. SUPERIOR SPECIFICATION

Benefit from a furniture pack included with every apartment, a fresh, timeless decor and high-quality specification that far exceeds expectations when compared to developments at a similar price point.



## 08. STUNNING RIVER VIEWS

Enjoy picturesque views of the Thames from your apartment and experience a more relaxing place to live.

## 10. CREATIVE VIBRANCY

Immerse yourself in a vibrant community of prestigious outdoor art, design studios, tech innovators, and the NOW Gallery. Often featured in Vogue, Wallpaper\*, and Dezeen, artists showcasing here have gained widespread recognition, including Camile Walala who went on to design the first-ever Hong Kong City Sign in Harbour City.



# INVESTMENT GROWTH POTENTIAL

£8.4 BILLION

Regeneration project

21.6%

Forecast house price growth  
from 2025-2029 (JLL)

37%

Average rental growth across  
the Peninsula since 2019

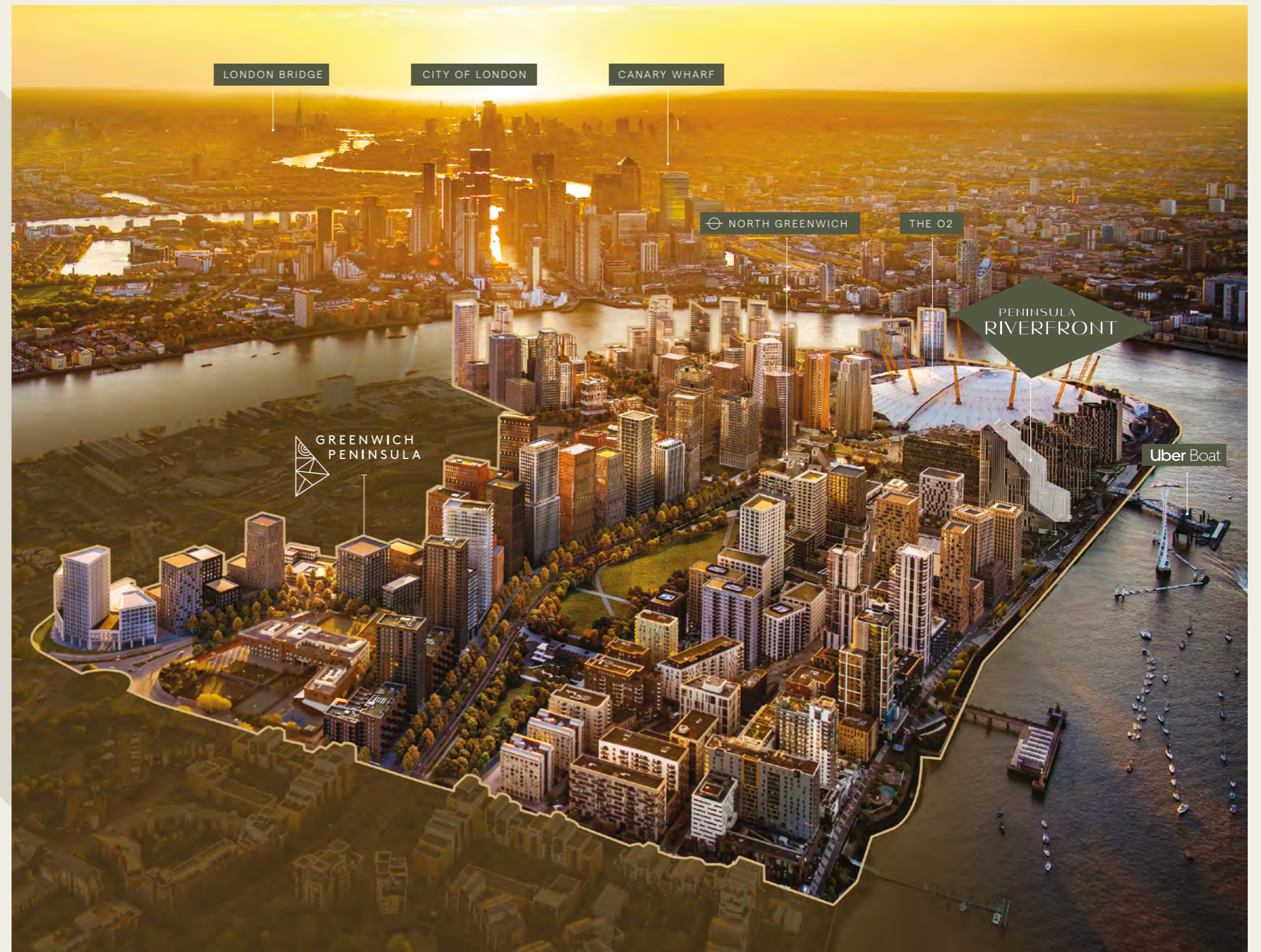
6.4%

Gross rental yields of up to 6.4%  
achieved at Peninsula Riverfront

Now ten years into a 30-year regeneration programme, Greenwich Peninsula is flourishing. Buyers at Peninsula Riverfront can capitalise on the potential for investment growth in an already established, yet continuously growing community.

\*Source: Office of National Statistics - data from Oct 19 - Oct 24. Rental data based on established rental values currently being achieved at Peninsula Riverfront and across the Peninsula.

Image showing the masterplan for Greenwich Peninsula, anticipated to be complete in 2044.

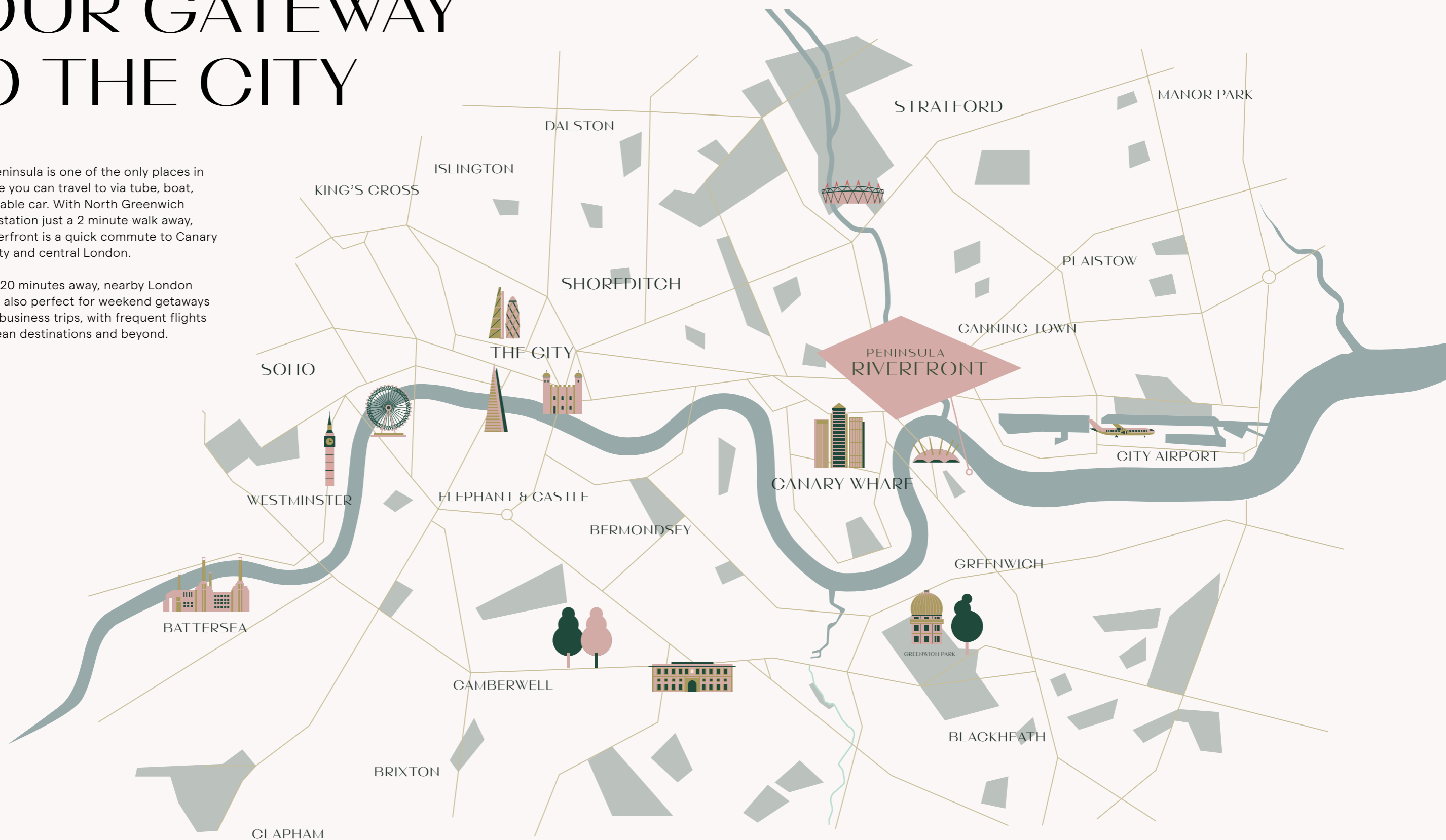




# YOUR GATEWAY TO THE CITY

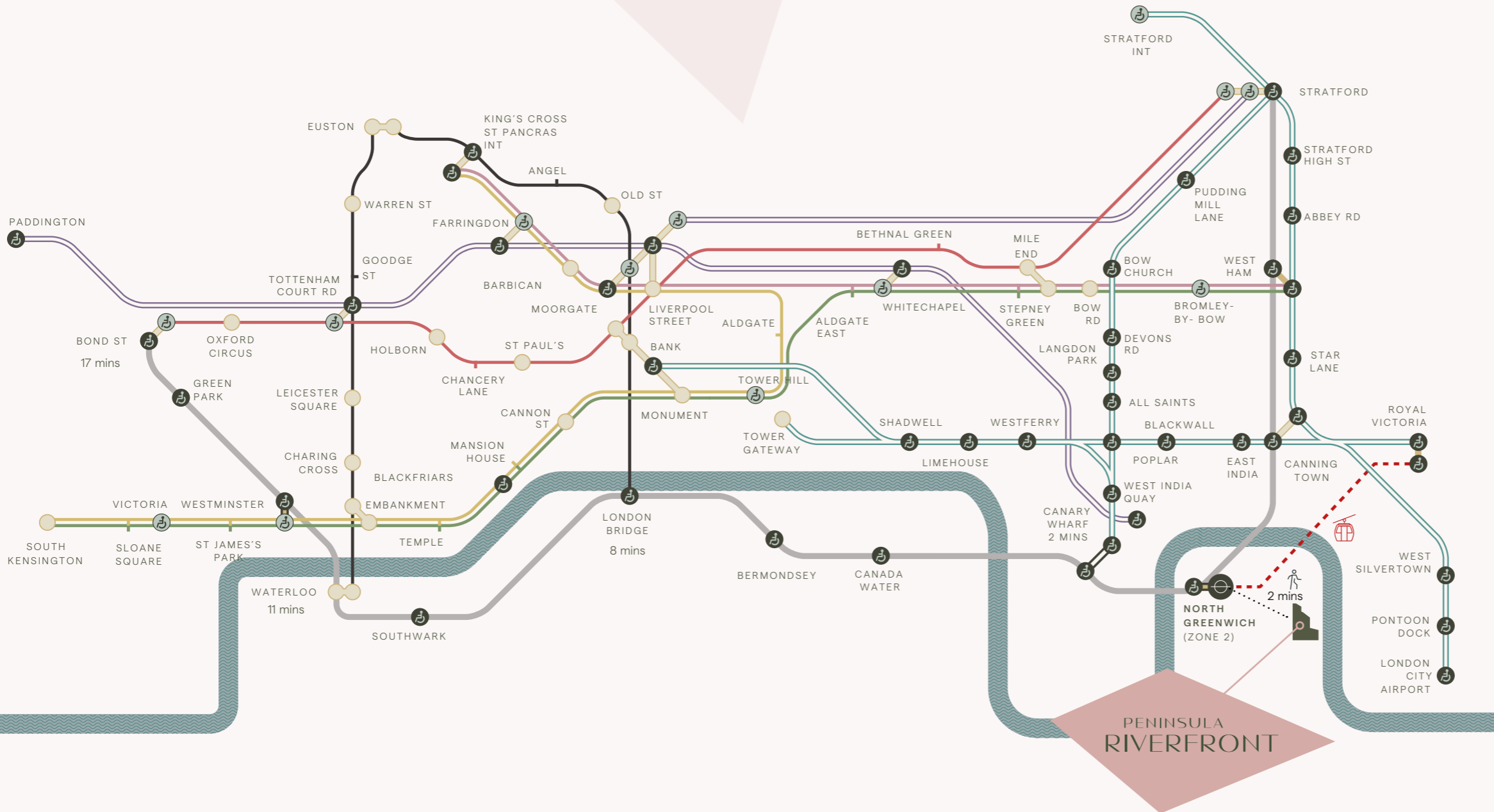
Greenwich Peninsula is one of the only places in London where you can travel to via tube, boat, train, car or cable car. With North Greenwich Underground station just a 2 minute walk away, Peninsula Riverfront is a quick commute to Canary Wharf, the City and central London.

At just under 20 minutes away, nearby London City airport is also perfect for weekend getaways and efficient business trips, with frequent flights to key European destinations and beyond.





# UNIQUELY CONNECTED



## JUBILEE LINE FROM NORTH GREENWICH



Canary Wharf	2 mins
London Bridge	8 mins
Waterloo Station	11 mins
Westminster	13 mins
Bond St	17 mins

## DLR FROM CANARY WHARF



Bank	10 mins
Stratford	13 mins
Custom House	14 mins
City Airport	14 mins

## ELIZABETH LINE FROM CANARY WHARF



Liverpool St	6 mins
Tottenham Court Rd	14 mins
Bond St	15 mins
Paddington	17 mins
Heathrow	40 mins

## UBER BOAT FROM NORTH GREENWICH PIER



Greenwich	8 mins
Tower Hill	30 mins
London Bridge	34 mins

## LONDON CABLE CAR FROM GREENWICH PENINSULA



Royal Docks and City Hall	7 mins
---------------------------	--------

EXPLORE  
YOUR NEW  
NEIGHBOURHOOD







# EVERYTHING CLOSE TO HOME

## CULTURE & ENTERTAINMENT

- 01 Hollywood Bowl at The O2
- 02 Cineworld at The O2
- 03 TOCA Social London
- 04 NOW Gallery
- 05 Design District
- 06 The Tide
- 07 Magazine London
- 08 Crazy Putt London
- 09 Modern Wharf Terrace
- 10 Everyman Canary Wharf

## RETAIL & GROCERIES

- 11 Outlet Shopping at The O2
- 12 Greenwich Peninsula Market
- 13 IKEA
- 14 Co-Op Food
- 15 Tesco Express
- 16 Asda
- 17 Aldi
- 18 Sainsburys
- 19 Waitrose
- 20 Jubilee Place Shopping Centre
- 21 Cabot Place Shopping Centre

## SPORTS & WELLBEING

- 22 Greenwich Yacht Club
- 23 The Greenwich Centre
- 24 Greenwich Peninsula Golf Driving Range
- 25 Design District Yoga
- 26 iFLY Indoor Skydiving

## FOOD & DRINKS

- 27 Kinaara
- 28 Market Brasserie
- 29 Meridian Lounge
- 30 Bureau Restaurant
- 31 Canteen Food Hall & Bar
- 32 Maracuya Restaurant
- 33 Coffee Couch
- 34 Wagamama
- 35 Manna Eating
- 36 EatFan
- 37 The Joint
- 38 The Pilot
- 39 Saikei Chinese Restaurant
- 40 Enderby House
- 41 The Pelton Arms
- 42 The Ivy in the Park
- 43 ROKA
- 44 Dishroom
- 45 Market Halls Cargo

## GREEN SPACES

- 46 Central Park
- 47 Greenwich Peninsula Ecology Park
- 48 Thames Path
- 49 East Greenwich Pleasaunce
- 50 Greenwich Park

## HERITAGE

- 51 Cutty Sark Museum
- 52 National Maritime Museum
- 53 The Old Royal Navy College
- 54 Royal Observatory

# ACCESS TO EDUCATION



London has long been a global hub for education, and Greenwich stands at its heart. Here, education isn't just a destination, it's woven into the fabric of the community, attracting people eager to learn and grow.

With Ravensbourne University right on the Peninsula and 10 of London's top universities within 35 minutes, the area is almost unmatched for accessing higher learning opportunities. For families, Greenwich is equally appealing, with 430 schools and nurseries located throughout the borough, providing an exceptional range of options for every stage of your child's educational journey.



UNIVERSITY / COLLEGE	TRAVEL TIME
Ravensbourne University London	1 mins
UCL School of Management	8 mins
University of Greenwich	10 mins
Kings College London, Waterloo Campus	15 mins
UCL East Campus	20 mins
Goldsmiths, University of London	21 mins
University of East London	22 mins
UAL London College of Fashion	23 mins
Queen Mary University of London	23 mins
UAL London College of Communication	23 mins
King's College London, Strand Campus	24 mins
Royal Academy of Music	24 mins
London Business School	26 mins
London School of Economics	26 mins
University College London	29 mins
University of the Arts, High Holborn	31 mins
Imperial College London	34 mins
UAL Central Saint Martins	35 mins
Royal College of Art	38 mins



NURSERIES	TRAVEL TIME
Little Elms Daycare	9 mins
Millennium Minis	12 mins
Anchors Away!	13 mins
Alphabet House	14 mins

PRIMARY SCHOOLS	TRAVEL TIME
Saint Mary Magdalene School	11 mins
Millennium Primary School	13 mins
Christ Church School	11 mins
St Joseph's Catholic School	11 mins

SECONDARY SCHOOLS	TRAVEL TIME
Saint Mary Magdalene School	11 mins
Greenwich Waldorf School	22 mins
Blackheath High School	24 mins

Scan to access the Greenwich Peninsula Education Guide.





# AT THE HEART OF IT ALL

---

View of the  
Design District,  
looking towards  
Central Park.



Greenwich Peninsula is a dynamic, island-esque neighbourhood that combines urban living with natural beauty. Surrounded by the Thames on three sides, this vibrant area offers a unique lifestyle where culture, creativity, and community converge.



---

'The Tide': An  
elevated pathway  
running through  
Greenwich Peninsula.





Office building within Design District designed by David Kohn Architects.



Entrance to Design District, with the iconic O2 backdrop.



Design District Co-working: A vibrant workspace hub in the heart of Design District.

# CREATIVE BY DESIGN

Peninsula Riverfront is just a 2-minute walk from London's Design District, named one of the World's Greatest Places by TIME Magazine. As a thriving creative cluster, Design District is home to over 170 businesses and counting, offering purpose-designed workspaces for the creative industry. Creative clusters like this are proven to boost nearby property values\*, adding an additional 6% capital growth per year. This vibrant hub also features Canteen Food Hall & Bar, Bureau restaurant, and a rooftop basketball court.

\*Source: DataLoft March 2022 review of 'Creative Places Create Value', Creative Land Trust et al.



Rooftop basketball court in Design District, designed by Architecture 00.



Canteen Food Hall & Bar: A lively food hall within Design District, designed by SelgasCano.





Market Brasserie: A contemporary dining destination offering fresh, seasonal dishes with stunning river views.



Festival vibes at Greenwich Peninsula.



Bureau Restaurant: A sophisticated dining spot in Design District.



Greenwich Peninsula Golf Driving Range.



Urban Village Fete at Greenwich Peninsula.

# EAT, DRINK, PLAY, REPEAT

Greenwich Peninsula blends architectural innovation with a vibrant cultural lifestyle. Enjoy over 40 restaurants and bars, 60 designer stores, and activations like the annual Urban Village Fete, the Aperol Terrace and Picturehouse Outdoor Cinema.

The nearby O2 Arena, one of Europe's busiest venues, hosts global icons like Beyoncé, Adele, and Coldplay, alongside NBA games and the ATP Cup. With 12 million annual visitors, riverside walks, festivals, and even appearances in Netflix and BBC productions, life on the Peninsula is as dynamic as its surroundings.





Yoga and meditation class at Greenwich Peninsula.



'Hydra & Kali': A 17-foot-high sculpture by Damien Hirst.

# UNWIND WITH NATURE

Adding value to your property and enhancing your wellbeing, Greenwich Peninsula offers 48 acres of open and green space and 1.6 miles of riverside. Discover a wealth of wildlife at the onsite ecology park and explore pieces by Damien Hirst, Allen Jones and Morag Myerscough along the Thames Art Walk.

Sunset over the Thames at Greenwich Peninsula.



Central Park: A green oasis in the heart of the Peninsula.





DISCOVER  
SOME OF  
THE PERKS



# WELCOME TO THE CLUB



## 20 EXCLUSIVE RESIDENT ONLY AMENITIES

As a resident of Peninsula Riverfront you will have access to The Upper Riverside Club. Designed by world-class interiors experts Tom Dixon, Design Haus Liberty, Studio Ashby, State of Craft and Emulsion Architecture, a collection of exclusive amenities are available to residents and have been split across the five buildings in the Upper Riverside district.

Enjoy an evening swim in the 15th floor pool, relax with a book on the rooftop terrace, watch a blockbuster in the private cinema, host a dinner party in the private dining room, or stay productive in one of the chic co-working lounges.





# RELAX & REJUVENATE

Unwind in the 15th-floor swimming pool, with breathtaking views of the iconic O2 Arena, or retreat to the soothing steam room for the ultimate escape and rejuvenation.







Perfect your hair  
and make-up in  
the changing areas  
designed by **Tom Dixon**  
and exuding the  
sophistication of a  
private members' club.





# ELEVATE YOUR FITNESS

Take your workouts to the next level with access to four state-of-the-art gyms, equipped with **Technogym** and **Peloton** equipment. Designed to inspire and energise, these spaces cater to every fitness goal, from cardio to strength training.





# STAY PRODUCTIVE

Be inspired in the resident lobbies and co-working lounges, thoughtfully crafted by renowned designers **Tom Dixon, Studio Ashby, State of Craft and Design Haus Liberty.** These spaces seamlessly combine functionality with artistry, fostering creativity and focus.







## TAKE IN THE VIEW

Relax in the sun or enjoy a sundowner on one of the five roof terraces, each offering breathtaking views of the River Thames. Fully furnished and thoughtfully designed, every space provides the perfect retreat for relaxation or a stylish setting for entertaining friends.





Take advantage  
of the outdoor  
BBQ facilities  
to host  
unforgettable  
get-togethers.







## UPGRADE YOUR EVENINGS

Entertain in style in the sleek multi-media room – perfect for movie nights, karaoke sessions, or dancing the night away with friends. Or, escape to the luxurious cinema room and enjoy your favourite film or sport in complete comfort.





# GET HOSTING

Host unforgettable dinner parties or productive business meetings in the versatile multi-function room. With modern furnishings and flexible layouts, it's the ideal setting for both social and professional occasions.





LOOK INSIDE  
YOUR NEW  
HOME





Inspired by the area's industrial heritage and natural surroundings, Peninsula Riverfront's interiors blend contemporary elegance with practical functionality. Thoughtfully designed, each space features floor-to-ceiling windows that flood the rooms with natural light and offer uninterrupted views of the river and cityscape.

# INSPIRATIONAL LIVING



Photography of the 3 bedroom show home at Peninsula Riverfront









Photography of the 3 bedroom show home at Peninsula Riverfront

Open-plan living areas are light-filled via full height windows.



Photography of the 3 bedroom show home at Peninsula Riverfront

Intimate corners are created through the striking architectural design.



Kitchens  
feature fully  
integrated  
Siemens  
appliances.



Photography of the 3 bedroom show home at Peninsula Riverfront

Quartz worktops  
are complimented  
by contemporary  
Hi-Macs splash-  
backs.



Photography of the 3 bedroom show home at Peninsula Riverfront









Photography of the 3 bedroom show home at Peninsula Riverfront



Photography of the 3 bedroom show home at Peninsula Riverfront

Sumptuous  
carpets add  
comfort and  
warmth to all  
bedrooms.





Photography of the 3 bedroom show home at Peninsula Riverfront



Full-height windows frame Thames and city views.



Photography of the 3 bedroom show home at Peninsula Riverfront



Photography of the 3 bedroom show home at Peninsula Riverfront





Photography of the 3 bedroom show home at Peninsula Riverfront

Bathrooms and en suites include a mosaic-tile feature wall, while elegant mirrored cabinets provide discreet storage.

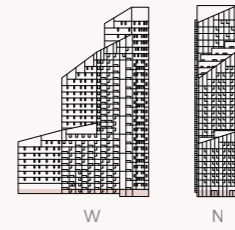


THE CHOICE  
IS YOURS

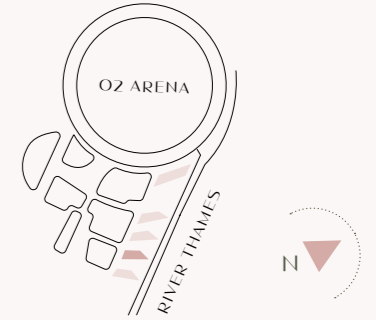




# GROUND LEVEL



- STUDIO
- 1 BEDROOM
- 2 BEDROOM



**APARTMENT G01**

<b>TOTAL AREA</b>	<b>65.4 SQ M</b>	<b>704 SQ FT</b>
TOTAL INTERNAL AREA	50.2 SQ M	540 SQ FT
TOTAL EXTERNAL AREA	15.2 SQ M	164 SQ FT

**APARTMENT G02**

<b>TOTAL AREA</b>	<b>66.1 SQ M</b>	<b>712 SQ FT</b>
TOTAL INTERNAL AREA	50.9 SQ M	548 SQ FT
TOTAL EXTERNAL AREA	15.2 SQ M	164 SQ FT

**APARTMENT G03**

<b>TOTAL AREA</b>	<b>67.9 SQ M</b>	<b>731 SQ FT</b>
TOTAL INTERNAL AREA	52.7 SQ M	567 SQ FT
TOTAL EXTERNAL AREA	15.2 SQ M	164 SQ FT

**APARTMENT G04**

<b>TOTAL AREA</b>	<b>50.2 SQ M</b>	<b>540 SQ FT</b>
TOTAL INTERNAL AREA	38.8 SQ M	418 SQ FT
TOTAL EXTERNAL AREA	11.4 SQ M	123 SQ FT

**APARTMENT G05**

<b>TOTAL AREA</b>	<b>47.1 SQ M</b>	<b>507 SQ FT</b>
TOTAL INTERNAL AREA	38.8 SQ M	418 SQ FT
TOTAL EXTERNAL AREA	8.3 SQ M	89 SQ FT

**APARTMENT G06**

<b>TOTAL AREA</b>	<b>110.1 SQ M</b>	<b>1,185 SQ FT</b>
TOTAL INTERNAL AREA	73.4 SQ M	790 SQ FT
TOTAL EXTERNAL AREA	36.7 SQ M	395 SQ FT

**APARTMENT G07**

<b>TOTAL AREA</b>	<b>101.8 SQ M</b>	<b>1,096 SQ FT</b>
TOTAL INTERNAL AREA	74.4 SQ M	801 SQ FT
TOTAL EXTERNAL AREA	27.4 SQ M	295 SQ FT

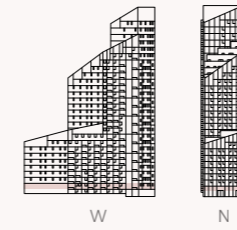


All ground level apartments include a private terrace.  
Please see individual floorplan for detail and dimensions



# GROUND LEVEL

## LEVEL 01



**APARTMENT 101**

<b>TOTAL AREA</b>	<b>86.3 SQ M</b>	<b>929 SQ FT</b>
TOTAL INTERNAL AREA	83.6 SQ M	900 SQ FT
TOTAL EXTERNAL AREA	2.7 SQ M	29 SQ FT

**APARTMENT 102**

<b>TOTAL AREA</b>	<b>62.2 SQ M</b>	<b>669 SQ FT</b>
TOTAL INTERNAL AREA	59.5 SQ M	641 SQ FT
TOTAL EXTERNAL AREA	2.7 SQ M	29 SQ FT

**APARTMENT 103**

<b>TOTAL AREA</b>	<b>52.3 SQ M</b>	<b>564 SQ FT</b>
TOTAL INTERNAL AREA	49.7 SQ M	535 SQ FT
TOTAL EXTERNAL AREA	2.7 SQ M	29 SQ FT

**APARTMENT 104**

<b>TOTAL AREA</b>	<b>52.9 SQ M</b>	<b>570 SQ FT</b>
TOTAL INTERNAL AREA	50.3 SQ M	541 SQ FT
TOTAL EXTERNAL AREA	2.7 SQ M	29 SQ FT

**APARTMENT 105**

<b>TOTAL AREA</b>	<b>55.3 SQ M</b>	<b>596 SQ FT</b>
TOTAL INTERNAL AREA	52.7 SQ M	567 SQ FT
TOTAL EXTERNAL AREA	2.7 SQ M	29 SQ FT

**APARTMENT 106**

<b>TOTAL AREA</b>	<b>39.2 SQ M</b>	<b>422 SQ FT</b>
TOTAL INTERNAL AREA	39.2 SQ M	422 SQ FT
TOTAL EXTERNAL AREA	0 SQ M	0 SQ FT

**APARTMENT 107**

<b>TOTAL AREA</b>	<b>41.5 SQ M</b>	<b>446 SQ FT</b>
TOTAL INTERNAL AREA	38.8 SQ M	418 SQ FT
TOTAL EXTERNAL AREA	2.7 SQ M	29 SQ FT

**APARTMENT 108**

<b>TOTAL AREA</b>	<b>52.6 SQ M</b>	<b>566 SQ FT</b>
TOTAL INTERNAL AREA	49.9 SQ M	537 SQ FT
TOTAL EXTERNAL AREA	2.7 SQ M	29 SQ FT

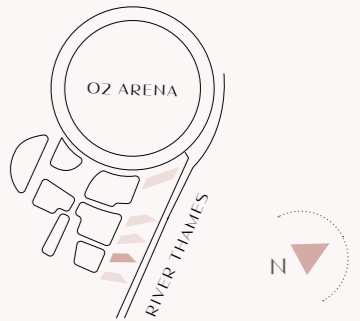
**APARTMENT 109**

<b>TOTAL AREA</b>	<b>42.1 SQ M</b>	<b>453 SQ FT</b>
TOTAL INTERNAL AREA	39.4 SQ M	424 SQ FT
TOTAL EXTERNAL AREA	2.7 SQ M	29 SQ FT

**APARTMENT 110**

<b>TOTAL AREA</b>	<b>75.4 SQ M</b>	<b>812 SQ FT</b>
TOTAL INTERNAL AREA	72.8 SQ M	784 SQ FT
TOTAL EXTERNAL AREA	2.7 SQ M	29 SQ FT

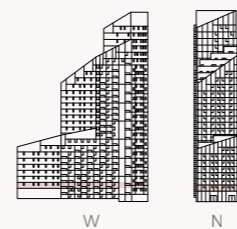
- STUDIO
- 1 BEDROOM
- 2 BEDROOM





# LEVEL 01

## LEVEL 02



**APARTMENT 201**

<b>TOTAL AREA</b>	<b>42.4 SQ M</b>	<b>456 SQ FT</b>
TOTAL INTERNAL AREA	42.4 SQ M	456 SQ FT
TOTAL EXTERNAL AREA	0 SQ M	0 SQ FT

**APARTMENT 202**

<b>TOTAL AREA</b>	<b>34.2 SQ M</b>	<b>368 SQ FT</b>
TOTAL INTERNAL AREA	34.2 SQ M	368 SQ FT
TOTAL EXTERNAL AREA	0 SQ M	0 SQ FT

**APARTMENT 203**

<b>TOTAL AREA</b>	<b>52.3 SQ M</b>	<b>564 SQ FT</b>
TOTAL INTERNAL AREA	49.7 SQ M	535 SQ FT
TOTAL EXTERNAL AREA	2.7 SQ M	29 SQ FT

**APARTMENT 204**

<b>TOTAL AREA</b>	<b>52.9 SQ M</b>	<b>570 SQ FT</b>
TOTAL INTERNAL AREA	50.3 SQ M	541 SQ FT
TOTAL EXTERNAL AREA	2.7 SQ M	29 SQ FT

**APARTMENT 205**

<b>TOTAL AREA</b>	<b>55.3 SQ M</b>	<b>596 SQ FT</b>
TOTAL INTERNAL AREA	52.7 SQ M	567 SQ FT
TOTAL EXTERNAL AREA	2.7 SQ M	29 SQ FT

**APARTMENT 206**

<b>TOTAL AREA</b>	<b>55.1 SQ M</b>	<b>593 SQ FT</b>
TOTAL INTERNAL AREA	52.4 SQ M	564 SQ FT
TOTAL EXTERNAL AREA	2.7 SQ M	29 SQ FT

**APARTMENT 207**

<b>TOTAL AREA</b>	<b>79.3 SQ M</b>	<b>854 SQ FT</b>
TOTAL INTERNAL AREA	76.7 SQ M	826 SQ FT
TOTAL EXTERNAL AREA	2.7 SQ M	29 SQ FT

**APARTMENT 208**

<b>TOTAL AREA</b>	<b>112.6 SQ M</b>	<b>1,213 SQ FT</b>
TOTAL INTERNAL AREA	110 SQ M	1,184 SQ FT
TOTAL EXTERNAL AREA	2.7 SQ M	29 SQ FT

**APARTMENT 209**

<b>TOTAL AREA</b>	<b>83.4 SQ M</b>	<b>897 SQ FT</b>
TOTAL INTERNAL AREA	80.7 SQ M	869 SQ FT
TOTAL EXTERNAL AREA	2.7 SQ M	29 SQ FT

**APARTMENT 210**

<b>TOTAL AREA</b>	<b>52.6 SQ M</b>	<b>566 SQ FT</b>
TOTAL INTERNAL AREA	49.9 SQ M	537 SQ FT
TOTAL EXTERNAL AREA	2.7 SQ M	29 SQ FT

**APARTMENT 211**

<b>TOTAL AREA</b>	<b>42.1 SQ M</b>	<b>453 SQ FT</b>
TOTAL INTERNAL AREA	39.4 SQ M	424 SQ FT
TOTAL EXTERNAL AREA	2.7 SQ M	29 SQ FT

**APARTMENT 212**

<b>TOTAL AREA</b>	<b>75.4 SQ M</b>	<b>812 SQ FT</b>
TOTAL INTERNAL AREA	72.8 SQ M	784 SQ FT
TOTAL EXTERNAL AREA	2.7 SQ M	29 SQ FT

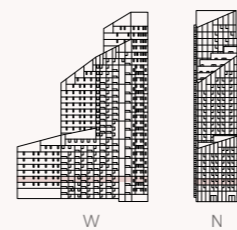
- STUDIO
- 1 BEDROOM
- 2 BEDROOM
- 3 BEDROOM





# LEVEL 02

## LEVEL 03



APARTMENT 301		
TOTAL AREA	86.3 SQ M	928 SQ FT
TOTAL INTERNAL AREA	83.6 SQ M	900 SQ FT
TOTAL EXTERNAL AREA	2.7 SQ M	29 SQ FT

APARTMENT 302		
TOTAL AREA	62.3 SQ M	670 SQ FT
TOTAL INTERNAL AREA	59.6 SQ M	642 SQ FT
TOTAL EXTERNAL AREA	2.7 SQ M	29 SQ FT

APARTMENT 303		
TOTAL AREA	52.3 SQ M	564 SQ FT
TOTAL INTERNAL AREA	49.7 SQ M	535 SQ FT
TOTAL EXTERNAL AREA	2.7 SQ M	29 SQ FT

APARTMENT 304		
TOTAL AREA	52.9 SQ M	570 SQ FT
TOTAL INTERNAL AREA	52.3 SQ M	541 SQ FT
TOTAL EXTERNAL AREA	2.7 SQ M	29 SQ FT

APARTMENT 305		
TOTAL AREA	55.3 SQ M	596 SQ FT
TOTAL INTERNAL AREA	52.7 SQ M	567 SQ FT
TOTAL EXTERNAL AREA	2.7 SQ M	29 SQ FT

APARTMENT 306		
TOTAL AREA	55.1 SQ M	593 SQ FT
TOTAL INTERNAL AREA	52.4 SQ M	564 SQ FT
TOTAL EXTERNAL AREA	2.7 SQ M	29 SQ FT

APARTMENT 307		
TOTAL AREA	79.3 SQ M	854 SQ FT
TOTAL INTERNAL AREA	76.7 SQ M	826 SQ FT
TOTAL EXTERNAL AREA	2.7 SQ M	29 SQ FT

APARTMENT 308		
TOTAL AREA	112.6 SQ M	1,213 SQ FT
TOTAL INTERNAL AREA	110 SQ M	1,184 SQ FT
TOTAL EXTERNAL AREA	2.7 SQ M	29 SQ FT

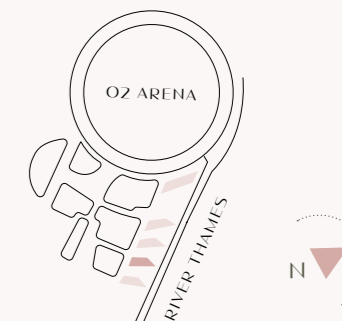
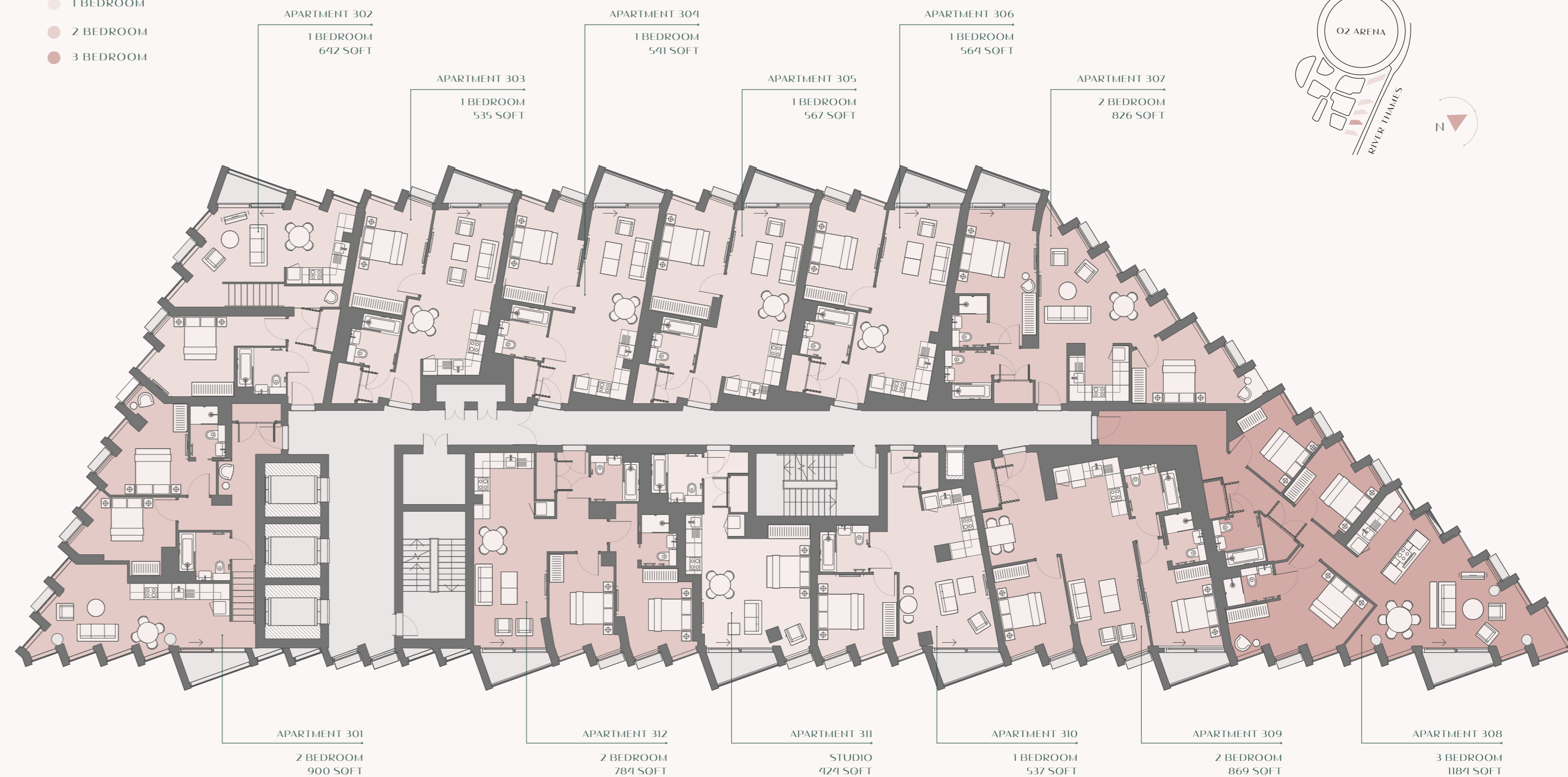
APARTMENT 309		
TOTAL AREA	83.4 SQ M	897 SQ FT
TOTAL INTERNAL AREA	80.7 SQ M	869 SQ FT
TOTAL EXTERNAL AREA	2.7 SQ M	29 SQ FT

APARTMENT 310		
TOTAL AREA	52.6 SQ M	566 SQ FT
TOTAL INTERNAL AREA	49.9 SQ M	537 SQ FT
TOTAL EXTERNAL AREA	2.7 SQ M	29 SQ FT

APARTMENT 311		
TOTAL AREA	42.1 SQ M	453 SQ FT
TOTAL INTERNAL AREA	39.4 SQ M	424 SQ FT
TOTAL EXTERNAL AREA	2.7 SQ M	29 SQ FT

APARTMENT 312		
TOTAL AREA	75.4 SQ M	812 SQ FT
TOTAL INTERNAL AREA	72.8 SQ M	784 SQ FT
TOTAL EXTERNAL AREA	2.7 SQ M	29 SQ FT

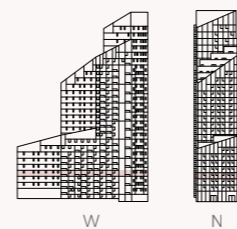
- STUDIO
- 1 BEDROOM
- 2 BEDROOM
- 3 BEDROOM





# LEVEL 03

## LEVEL 04



APARTMENT 401		
TOTAL AREA	86.3 SQ M	928 SQ FT
TOTAL INTERNAL AREA	83.6 SQ M	900 SQ FT
TOTAL EXTERNAL AREA	2.7 SQ M	29 SQ FT

APARTMENT 402		
TOTAL AREA	62.2 SQ M	669 SQ FT
TOTAL INTERNAL AREA	59.5 SQ M	641 SQ FT
TOTAL EXTERNAL AREA	2.7 SQ M	29 SQ FT

APARTMENT 403		
TOTAL AREA	52.3 SQ M	564 SQ FT
TOTAL INTERNAL AREA	49.7 SQ M	535 SQ FT
TOTAL EXTERNAL AREA	2.7 SQ M	29 SQ FT

APARTMENT 404		
TOTAL AREA	52.9 SQ M	570 SQ FT
TOTAL INTERNAL AREA	50.3 SQ M	541 SQ FT
TOTAL EXTERNAL AREA	2.7 SQ M	29 SQ FT

APARTMENT 405		
TOTAL AREA	55.3 SQ M	596 SQ FT
TOTAL INTERNAL AREA	52.7 SQ M	567 SQ FT
TOTAL EXTERNAL AREA	2.7 SQ M	29 SQ FT

APARTMENT 406		
TOTAL AREA	55 SQ M	593 SQ FT
TOTAL INTERNAL AREA	52.4 SQ M	564 SQ FT
TOTAL EXTERNAL AREA	2.7 SQ M	29 SQ FT

APARTMENT 407		
TOTAL AREA	79.3 SQ M	854 SQ FT
TOTAL INTERNAL AREA	76.7 SQ M	826 SQ FT
TOTAL EXTERNAL AREA	2.7 SQ M	29 SQ FT

APARTMENT 408		
TOTAL AREA	112.6 SQ M	1,213 SQ FT
TOTAL INTERNAL AREA	110 SQ M	1,184 SQ FT
TOTAL EXTERNAL AREA	2.7 SQ M	29 SQ FT

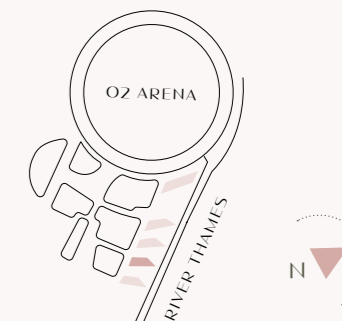
APARTMENT 409		
TOTAL AREA	83.4 SQ M	897 SQ FT
TOTAL INTERNAL AREA	80.7 SQ M	869 SQ FT
TOTAL EXTERNAL AREA	2.7 SQ M	29 SQ FT

APARTMENT 410		
TOTAL AREA	52.6 SQ M	566 SQ FT
TOTAL INTERNAL AREA	49.9 SQ M	537 SQ FT
TOTAL EXTERNAL AREA	2.7 SQ M	29 SQ FT

APARTMENT 411		
TOTAL AREA	39.4 SQ M	424 SQ FT
TOTAL INTERNAL AREA	39.4 SQ M	424 SQ FT
TOTAL EXTERNAL AREA	0 SQ M	0 SQ FT

APARTMENT 412		
TOTAL AREA	77.9 SQ M	839 SQ FT
TOTAL INTERNAL AREA	72.6 SQ M	782 SQ FT
TOTAL EXTERNAL AREA	5.3 SQ M	57 SQ FT

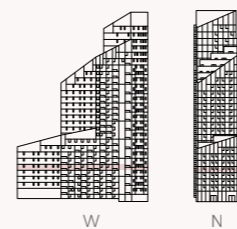
- STUDIO
- 1 BEDROOM
- 2 BEDROOM
- 3 BEDROOM





# LEVEL 04

## LEVEL 05



**APARTMENT 501**

TOTAL AREA	42.4 SQ M	456 SQ FT
TOTAL INTERNAL AREA	42.4 SQ M	456 SQ FT
TOTAL EXTERNAL AREA	0 SQ M	0 SQ FT

**APARTMENT 502**

TOTAL AREA	34.2 SQ M	368 SQ FT
TOTAL INTERNAL AREA	34.2 SQ M	368 SQ FT
TOTAL EXTERNAL AREA	0 SQ M	0 SQ FT

**APARTMENT 503**

TOTAL AREA	53.0 SQ M	571 SQ FT
TOTAL INTERNAL AREA	50.4 SQ M	543 SQ FT
TOTAL EXTERNAL AREA	2.7 SQ M	29 SQ FT

**APARTMENT 504**

TOTAL AREA	52.9 SQ M	570 SQ FT
TOTAL INTERNAL AREA	50.3 SQ M	541 SQ FT
TOTAL EXTERNAL AREA	2.7 SQ M	29 SQ FT

**APARTMENT 505**

TOTAL AREA	56.1 SQ M	604 SQ FT
TOTAL INTERNAL AREA	53.5 SQ M	576 SQ FT
TOTAL EXTERNAL AREA	2.7 SQ M	29 SQ FT

**APARTMENT 506**

TOTAL AREA	55.0 SQ M	593 SQ FT
TOTAL INTERNAL AREA	52.4 SQ M	564 SQ FT
TOTAL EXTERNAL AREA	2.7 SQ M	29 SQ FT

**APARTMENT 507**

TOTAL AREA	79.3 SQ M	854 SQ FT
TOTAL INTERNAL AREA	76.7 SQ M	826 SQ FT
TOTAL EXTERNAL AREA	2.7 SQ M	29 SQ FT

**APARTMENT 508**

TOTAL AREA	112.6 SQ M	1,213 SQ FT
TOTAL INTERNAL AREA	110 SQ M	1,184 SQ FT
TOTAL EXTERNAL AREA	2.7 SQ M	29 SQ FT

**APARTMENT 509**

TOTAL AREA	83.4 SQ M	897 SQ FT
TOTAL INTERNAL AREA	80.7 SQ M	869 SQ FT
TOTAL EXTERNAL AREA	2.7 SQ M	29 SQ FT

**APARTMENT 510**

TOTAL AREA	52.8 SQ M	569 SQ FT
TOTAL INTERNAL AREA	50.2 SQ M	540 SQ FT
TOTAL EXTERNAL AREA	2.7 SQ M	29 SQ FT

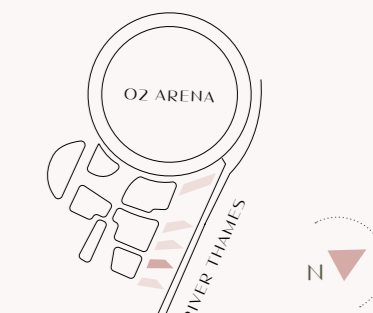
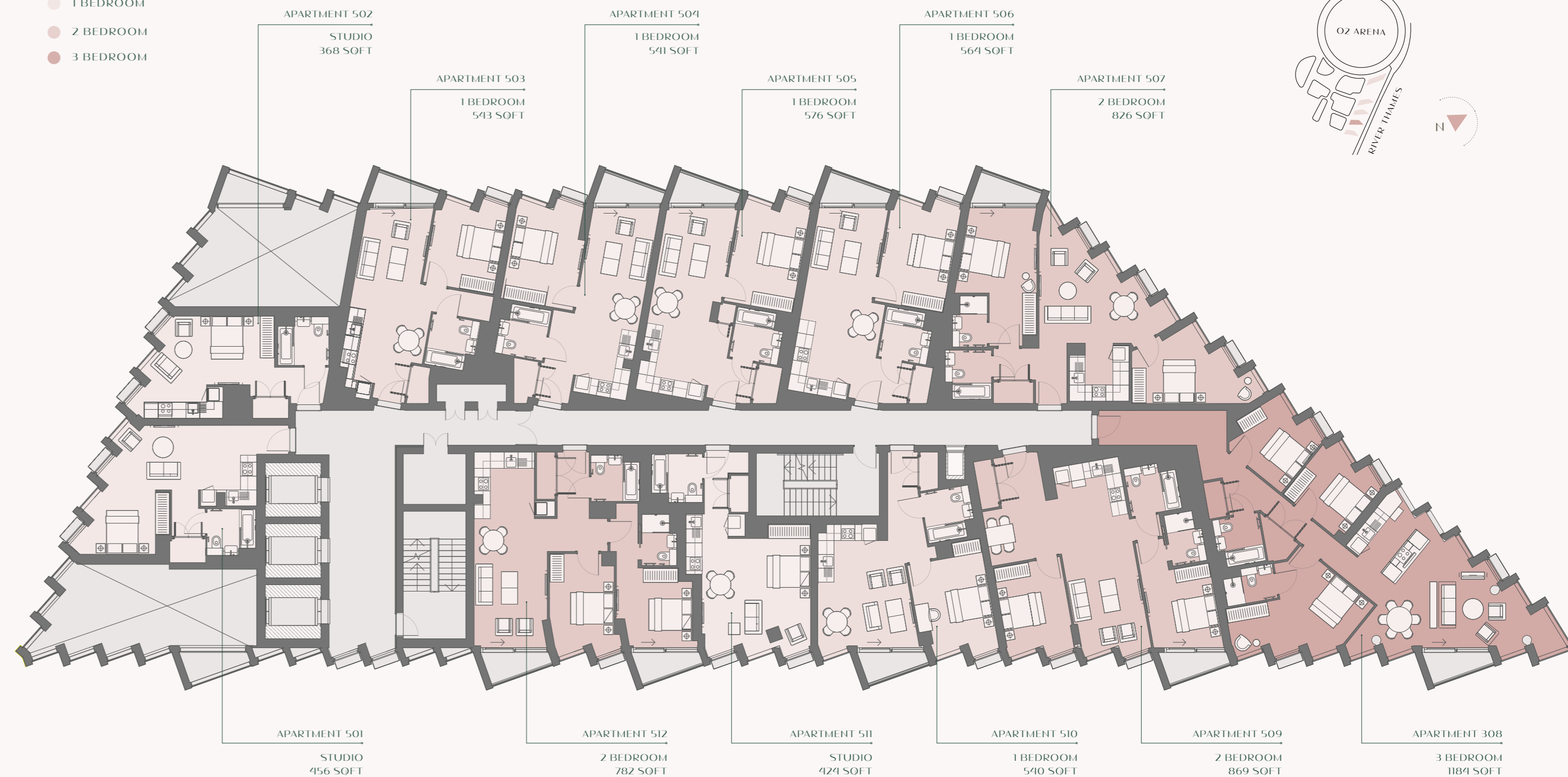
**APARTMENT 511**

TOTAL AREA	39.4 SQ M	424 SQ FT
TOTAL INTERNAL AREA	39.4 SQ M	424 SQ FT
TOTAL EXTERNAL AREA	0 SQ M	0 SQ FT

**APARTMENT 512**

TOTAL AREA	77.9 SQ M	839 SQ FT
TOTAL INTERNAL AREA	72.6 SQ M	782 SQ FT
TOTAL EXTERNAL AREA	5.3 SQ M	57 SQ FT

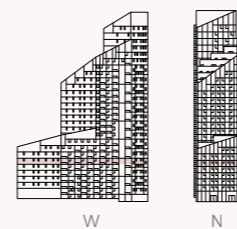
- STUDIO
- 1 BEDROOM
- 2 BEDROOM
- 3 BEDROOM





# LEVEL 05

## LEVEL 06



APARTMENT 601		
TOTAL AREA	86.3 SQ M	928 SQ FT
TOTAL INTERNAL AREA	83.6 SQ M	900 SQ FT
TOTAL EXTERNAL AREA	2.7 SQ M	29 SQ FT

APARTMENT 602		
TOTAL AREA	62.3 SQ M	670 SQ FT
TOTAL INTERNAL AREA	59.6 SQ M	642 SQ FT
TOTAL EXTERNAL AREA	2.7 SQ M	29 SQ FT

APARTMENT 603		
TOTAL AREA	53.0 SQ M	571 SQ FT
TOTAL INTERNAL AREA	50.4 SQ M	543 SQ FT
TOTAL EXTERNAL AREA	2.7 SQ M	29 SQ FT

APARTMENT 604		
TOTAL AREA	53.2 SQ M	573 SQ FT
TOTAL INTERNAL AREA	50.6 SQ M	545 SQ FT
TOTAL EXTERNAL AREA	2.7 SQ M	29 SQ FT

APARTMENT 605		
TOTAL AREA	56.1 SQ M	604 SQ FT
TOTAL INTERNAL AREA	53.5 SQ M	576 SQ FT
TOTAL EXTERNAL AREA	2.7 SQ M	29 SQ FT

APARTMENT 606		
TOTAL AREA	55.0 SQ M	593 SQ FT
TOTAL INTERNAL AREA	52.4 SQ M	564 SQ FT
TOTAL EXTERNAL AREA	2.7 SQ M	29 SQ FT

APARTMENT 607		
TOTAL AREA	79.3 SQ M	854 SQ FT
TOTAL INTERNAL AREA	76.7 SQ M	826 SQ FT
TOTAL EXTERNAL AREA	2.7 SQ M	29 SQ FT

APARTMENT 608		
TOTAL AREA	112.6 SQ M	1,213 SQ FT
TOTAL INTERNAL AREA	110.0 SQ M	1,184 SQ FT
TOTAL EXTERNAL AREA	2.7 SQ M	29 SQ FT

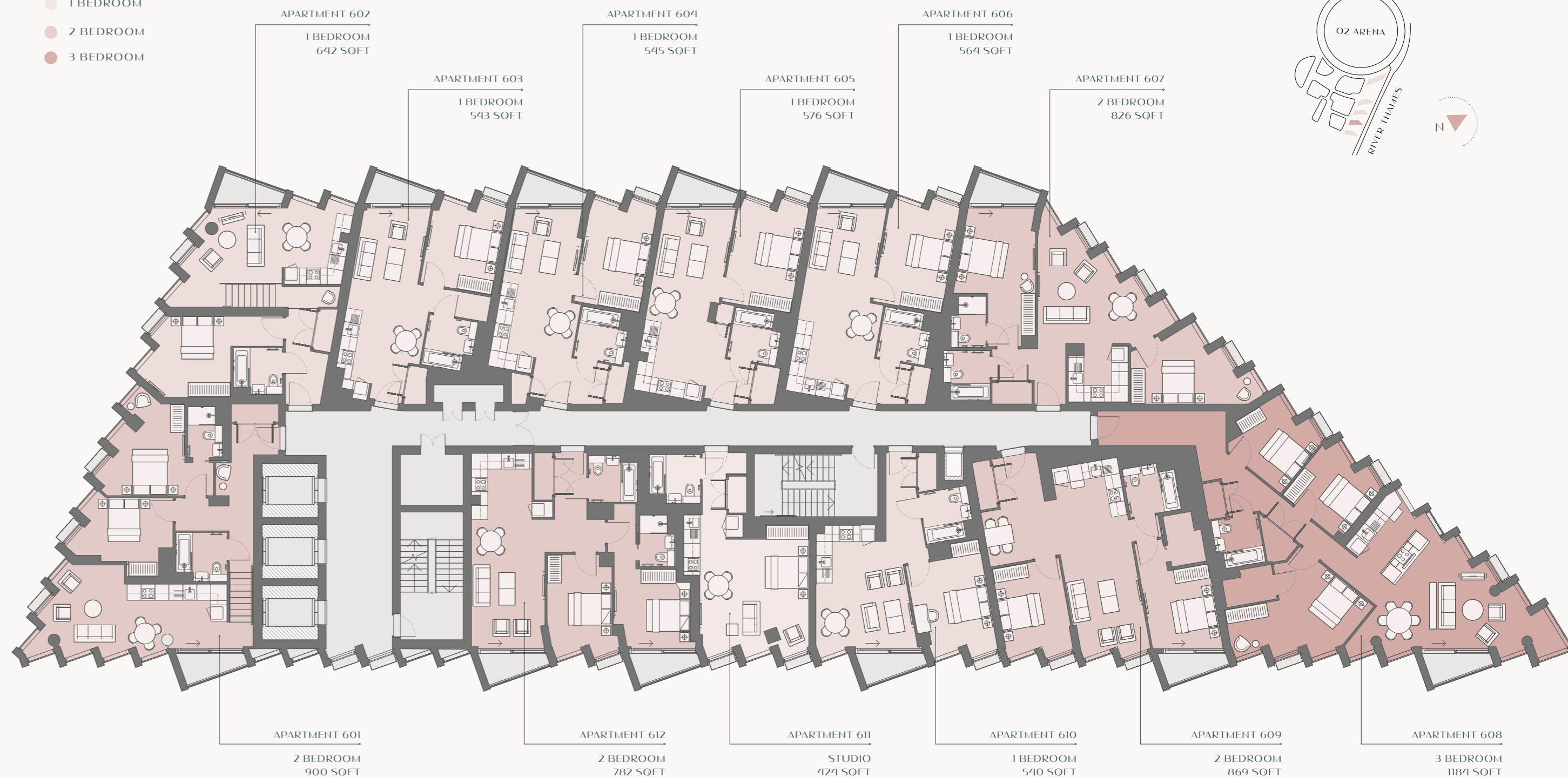
APARTMENT 609		
TOTAL AREA	83.4 SQ M	897 SQ FT
TOTAL INTERNAL AREA	80.7 SQ M	869 SQ FT
TOTAL EXTERNAL AREA	2.7 SQ M	29 SQ FT

APARTMENT 610		
TOTAL AREA	52.8 SQ M	569 SQ FT
TOTAL INTERNAL AREA	50.2 SQ M	540 SQ FT
TOTAL EXTERNAL AREA	2.7 SQ M	29 SQ FT

APARTMENT 611		
TOTAL AREA	39.4 SQ M	424 SQ FT
TOTAL INTERNAL AREA	39.4 SQ M	424 SQ FT
TOTAL EXTERNAL AREA	0 SQ M	0 SQ FT

APARTMENT 612		
TOTAL AREA	77.9 SQ M	839 SQ FT
TOTAL INTERNAL AREA	72.6 SQ M	782 SQ FT
TOTAL EXTERNAL AREA	5.3 SQ M	57 SQ FT

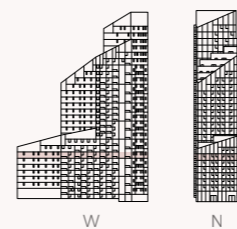
- STUDIO
- 1 BEDROOM
- 2 BEDROOM
- 3 BEDROOM





# LEVEL 06

## LEVEL 07



**APARTMENT 701**

<b>TOTAL AREA</b>	<b>86.3 SQ M</b>	<b>928 SQ FT</b>
TOTAL INTERNAL AREA	83.6 SQ M	900 SQ FT
TOTAL EXTERNAL AREA	2.7 SQ M	29 SQ FT

**APARTMENT 702**

<b>TOTAL AREA</b>	<b>62.2 SQ M</b>	<b>669 SQ FT</b>
TOTAL INTERNAL AREA	59.5 SQ M	641 SQ FT
TOTAL EXTERNAL AREA	2.7 SQ M	29 SQ FT

**APARTMENT 703**

<b>TOTAL AREA</b>	<b>53.0 SQ M</b>	<b>571 SQ FT</b>
TOTAL INTERNAL AREA	50.4 SQ M	543 SQ FT
TOTAL EXTERNAL AREA	2.7 SQ M	29 SQ FT

**APARTMENT 704**

<b>TOTAL AREA</b>	<b>53.2 SQ M</b>	<b>573 SQ FT</b>
TOTAL INTERNAL AREA	50.6 SQ M	545 SQ FT
TOTAL EXTERNAL AREA	2.7 SQ M	29 SQ FT

**APARTMENT 705**

<b>TOTAL AREA</b>	<b>56.1 SQ M</b>	<b>604 SQ FT</b>
TOTAL INTERNAL AREA	53.5 SQ M	576 SQ FT
TOTAL EXTERNAL AREA	2.7 SQ M	29 SQ FT

**APARTMENT 706**

<b>TOTAL AREA</b>	<b>55.0 SQ M</b>	<b>593 SQ FT</b>
TOTAL INTERNAL AREA	52.4 SQ M	564 SQ FT
TOTAL EXTERNAL AREA	2.7 SQ M	29 SQ FT

**APARTMENT 707**

<b>TOTAL AREA</b>	<b>79.3 SQ M</b>	<b>854 SQ FT</b>
TOTAL INTERNAL AREA	76.7 SQ M	826 SQ FT
TOTAL EXTERNAL AREA	2.7 SQ M	29 SQ FT

**APARTMENT 708**

<b>TOTAL AREA</b>	<b>112.6 SQ M</b>	<b>1,213 SQ FT</b>
TOTAL INTERNAL AREA	110.0 SQ M	1,184 SQ FT
TOTAL EXTERNAL AREA	2.7 SQ M	29 SQ FT

**APARTMENT 709**

<b>TOTAL AREA</b>	<b>83.4 SQ M</b>	<b>897 SQ FT</b>
TOTAL INTERNAL AREA	80.7 SQ M	869 SQ FT
TOTAL EXTERNAL AREA	2.7 SQ M	29 SQ FT

**APARTMENT 710**

<b>TOTAL AREA</b>	<b>52.8 SQ M</b>	<b>569 SQ FT</b>
TOTAL INTERNAL AREA	50.2 SQ M	540 SQ FT
TOTAL EXTERNAL AREA	2.7 SQ M	29 SQ FT

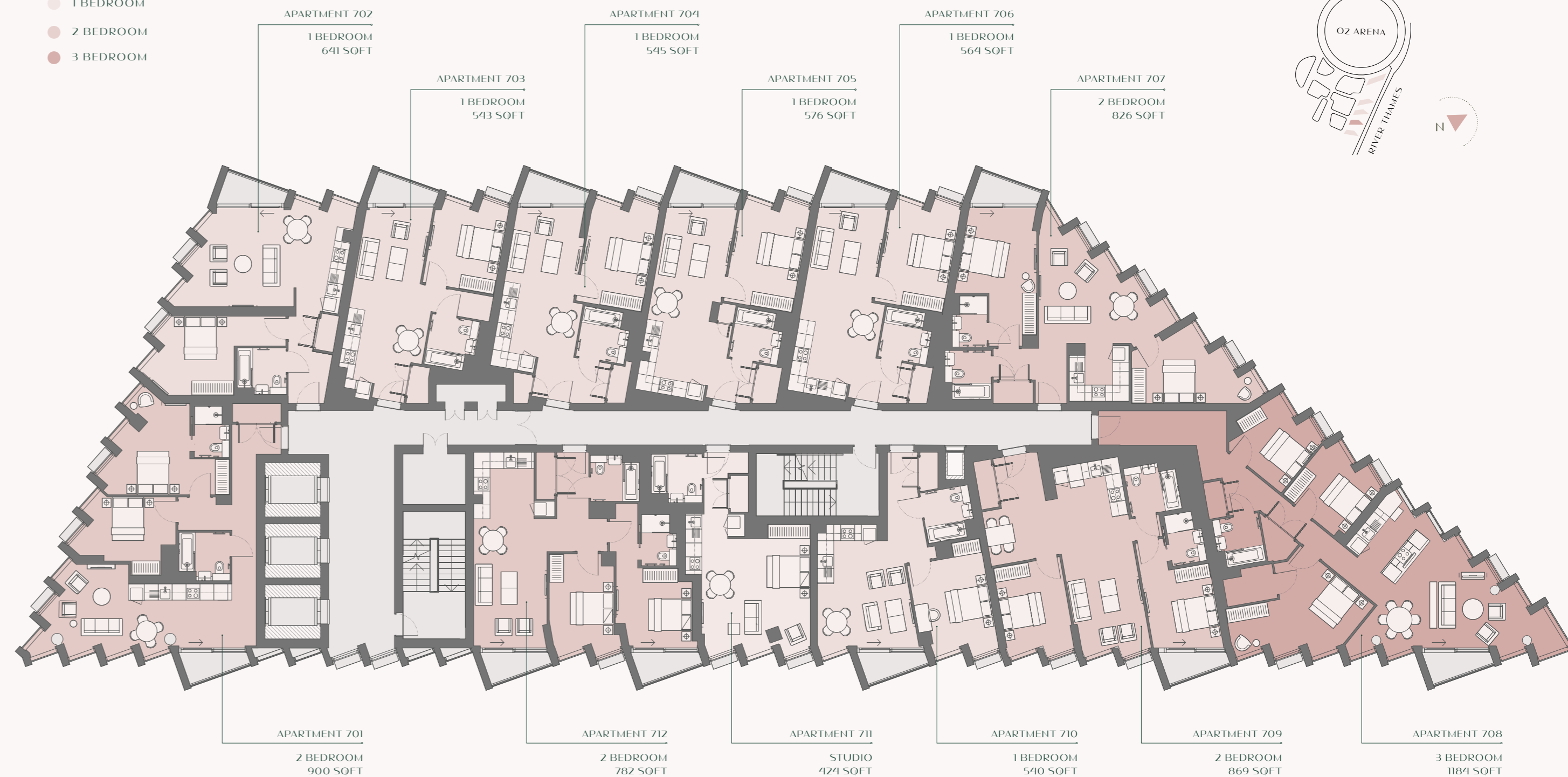
**APARTMENT 711**

<b>TOTAL AREA</b>	<b>39.4 SQ M</b>	<b>424 SQ FT</b>
TOTAL INTERNAL AREA	39.4 SQ M	424 SQ FT
TOTAL EXTERNAL AREA	0 SQ M	0 SQ FT

**APARTMENT 712**

<b>TOTAL AREA</b>	<b>77.9 SQ M</b>	<b>839 SQ FT</b>
TOTAL INTERNAL AREA	72.6 SQ M	782 SQ FT
TOTAL EXTERNAL AREA	5.3 SQ M	57 SQ FT

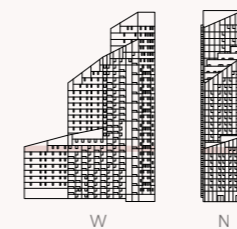
- STUDIO
- 1 BEDROOM
- 2 BEDROOM
- 3 BEDROOM





# LEVEL 07

## LEVEL 08



- STUDIO
- 1 BEDROOM
- 2 BEDROOM

**APARTMENT 801**

<b>TOTAL AREA</b>	<b>42.4 SQ M</b>	<b>456 SQ FT</b>
TOTAL INTERNAL AREA	42.4 SQ M	456 SQ FT
TOTAL EXTERNAL AREA	0 SQ M	0 SQ FT

**APARTMENT 802**

<b>TOTAL AREA</b>	<b>34.2 SQ M</b>	<b>368 SQ FT</b>
TOTAL INTERNAL AREA	34.2 SQ M	368 SQ FT
TOTAL EXTERNAL AREA	0 SQ M	0 SQ FT

**APARTMENT 803**

<b>TOTAL AREA</b>	<b>53.0 SQ M</b>	<b>571 SQ FT</b>
TOTAL INTERNAL AREA	50.4 SQ M	543 SQ FT
TOTAL EXTERNAL AREA	2.7 SQ M	29 SQ FT

**APARTMENT 804**

<b>TOTAL AREA</b>	<b>53.2 SQ M</b>	<b>573 SQ FT</b>
TOTAL INTERNAL AREA	50.6 SQ M	545 SQ FT
TOTAL EXTERNAL AREA	2.7 SQ M	29 SQ FT

**APARTMENT 805**

<b>TOTAL AREA</b>	<b>56.1 SQ M</b>	<b>604 SQ FT</b>
TOTAL INTERNAL AREA	53.5 SQ M	576 SQ FT
TOTAL EXTERNAL AREA	2.7 SQ M	29 SQ FT

**APARTMENT 806**

<b>TOTAL AREA</b>	<b>55.0 SQ M</b>	<b>593 SQ FT</b>
TOTAL INTERNAL AREA	52.4 SQ M	564 SQ FT
TOTAL EXTERNAL AREA	2.7 SQ M	29 SQ FT

**APARTMENT 807**

<b>TOTAL AREA</b>	<b>91.5 SQ M</b>	<b>985 SQ FT</b>
TOTAL INTERNAL AREA	85.6 SQ M	921 SQ FT
TOTAL EXTERNAL AREA	5.9 SQ M	64 SQ FT

**APARTMENT 808**

<b>TOTAL AREA</b>	<b>85.0 SQ M</b>	<b>915 SQ FT</b>
TOTAL INTERNAL AREA	79.7 SQ M	858 SQ FT
TOTAL EXTERNAL AREA	5.3 SQ M	57 SQ FT

**APARTMENT 809**

<b>TOTAL AREA</b>	<b>44.9 SQ M</b>	<b>483 SQ FT</b>
TOTAL INTERNAL AREA	42.2 SQ M	454 SQ FT
TOTAL EXTERNAL AREA	2.7 SQ M	29 SQ FT

**APARTMENT 810**

<b>TOTAL AREA</b>	<b>56.0 SQ M</b>	<b>603 SQ FT</b>
TOTAL INTERNAL AREA	53.4 SQ M	575 SQ FT
TOTAL EXTERNAL AREA	2.7 SQ M	29 SQ FT

**APARTMENT 811**

<b>TOTAL AREA</b>	<b>51.6 SQ M</b>	<b>555 SQ FT</b>
TOTAL INTERNAL AREA	48.9 SQ M	526 SQ FT
TOTAL EXTERNAL AREA	2.7 SQ M	29 SQ FT





# LEVEL 08

## SPECIFICATION

The apartments at Peninsula Riverfront are finished to an exceptional standard, featuring quartz countertops and integrated Siemens appliances in the kitchens, fully tiled bathrooms and ensuites, engineered timber flooring in living areas, and plush carpets in the bedrooms for ultimate comfort. Buyers can choose between two stylish colour schemes: a light palette which has been applied to odd-numbered floors and a darker, more dramatic option on even-numbered floors, ensuring a personalised and distinctive living experience from the ground up.

### HALL / LIVING AREA

**Flooring**  
- Stained oak engineered timber floor

**Paint Finish**  
- Ceilings brilliant white  
- MDF, eggshell painted skirtings and architraves  
- Lacquer or spray paint finish to internal doors and panelling

**Ironmongery**  
- Brushed brass ironmongery throughout

**Access Control System**  
- Wall-mounted video intercom system with access control

**Utility Cupboard**  
- Freestanding combined washer dryer

**Sockets & Switches**  
- Brushed brass sockets and light switches throughout

**Television & Phone Line**  
- Television and telephone sockets in living areas

### KITCHEN

**Flooring**  
- Stained oak engineered timber floor

**Cabinetry (light palette)**  
- Upper cabinetry - white spray lacquer  
- Lower cabinetry - light grey spray lacquer  
- Handle-less  
- Recessed brass trim  
- Open shelves oak veneer

**Worktop & Splashback (light palette)**  
- Light grey composite quartz honed Caesarstone worktop  
- White acrylic solid Hi-Macs splashback

**Cabinetry (dark palette)**  
- Upper cabinetry - medium grey spray lacquer  
- Lower cabinetry - dark grey spray lacquer  
- Handle-less  
- Recessed brass trim  
- Open shelves oak veneer

**Worktop & Splashback (dark palette)**  
- Dark grey composite quartz honed Caesarstone worktop  
- Grey acrylic solid Hi-Macs splashback

**Sink & Taps**  
- Undermounted sink with matt brass single lever mixer and drainage grooves within worktop

**Appliances**  
- Siemens oven and microwave (combi or separate depending on unit type)  
- Induction hob  
- Siemens fridge/freezer  
- Siemens dishwasher  
- Extractor fan above hob

**Paint Finish**  
- Matt emulsion

**Sockets (light palette)**  
- White or light grey sockets within splashback

**Sockets (dark palette)**  
- Matt grey metal sockets within splashback

### BEDROOMS

**Flooring**  
- Carpet

**Wardrobe**  
- Fitted wardrobes in primary and second bedroom, matt lacquered or spray paint finish door fronts

**Paint Finish**  
- Matt Emulsion

### FAMILY BATHROOM

**Tiles & Finishes (light palette)**  
- Light ceramic floor tile with diagonal cut  
- Light blue glazed mosaic tile bath feature wall  
- Light terrazzo splashback wall  
- Light composite stone cistern enclosure, bath panel and bath end panel.  
- White Hi-Macs recessed skirting  
- Bespoke wall hung mirror cabinet with brass frame

**Tiles & Finishes (dark palette)**  
- Dark ceramic floor tile with diagonal cut  
- Medium blue/grey glazed mosaic tile bath feature wall  
- Dark terrazzo splashback wall  
- Dark composite stone cistern enclosure, bath panel and bath end panel.  
- Light grey Hi-Macs recessed skirting  
- Bespoke wall hung mirror cabinet with brass frame

**Paint Finish**  
- Soft sheen emulsion

**Basin**  
- White ceramic basin with brushed brass tap and mixer

**Bath**  
- Built-in white bath with brushed brass bath filler

**Toilet**  
- Wall hung WC with concealed cistern, soft close seat and round dual flush plate

**Shower Head**  
- Brushed brass hand shower, mixers and fixed shower head

### ENSUITE

**Tiles & Finishes (light palette)**  
- Light ceramic floor tile with diagonal cut  
- Light grey glazed mosaic tile feature walls  
- Light terrazzo splashback wall  
- Light composite stone cistern enclosure and shower end panel  
- Bespoke wall hung mirror cabinet with brass frame

**Tiles & Finishes (dark palette)**  
- Dark ceramic floor tile with diagonal cut  
- Dark grey glazed mosaic tile feature walls  
- Dark terrazzo splashback wall  
- Dark composite stone cistern enclosure and shower end panel  
- Bespoke wall hung mirror cabinet with brass frame

**Paint Finish**  
- Soft sheen emulsion

**Shower**  
- Shower enclosure with hinged glass screen

**Basin**  
- White ceramic basin with brushed brass tap and mixer

**Toilet**  
- Wall hung WC with concealed cistern, soft close seat and round dual flush plate

**Shower Head**  
- Brushed brass shower mixers and fixed shower head

### ADDITIONAL

**Heating**  
- Underfloor heating throughout living areas and heated towel rail in bathrooms

**Lighting**  
- Thin-profile downlights with anti-glare bezel

**Broadband**  
- High speed Fibre Broadband (subject to individual resident contract)





# EXCEPTIONAL TEAM





THE DEVELOPER:

## KNIGHT DRAGON

Leading the 30-year transformation of Greenwich Peninsula is global property developer, Knight Dragon. As one of the largest single-owned regeneration projects in Europe, Knight Dragon is committed to delivering a distinctive, sustainable new destination for London.

Knight Dragon's previous London development, 'The Knightsbridge', was Property Week's 'Residential Development of the Year'. With architecture by Squire and Partners, The Knightsbridge was the first concept of its kind in London, offering residents hotel-quality services through Hyatt International.

Backed by Dr. Henry Cheng and driven by entrepreneur and founder Sammy Lee, their combined expertise alongside the Knight Dragon team ensures a truly unique and international approach to the masterplan, and underlines the credibility of the Peninsula. From the vision to the detail, the opportunity to the execution, they think global and act local to create truly outstanding developments of the highest quality.

All apartments in Peninsula Riverfront are let and managed by the exceptional Greenwich Peninsula Lettings Team.

With nearly 100 years of combined experience and responsible of over 95% of rental properties on the Peninsula, the Lettings & Property Management teams excel in connecting tenants with the perfect homes. Since the apartments at Greenwich Peninsula were built, they've delivered exceptional service for landlords and tenants alike.



THE ARCHITECTS:

## SKIDMORE, OWINGS & MERRILL

Peninsula Riverfront's architects, Skidmore, Owings & Merrill, are global leaders in high-rise development, with landmark projects including the Burj Khalifa in Dubai and the new World Trade Centre in New York.

Since their founding in 1936, they have completed over 10,000 projects worldwide, earning a reputation for iconic architecture and a steadfast commitment to design excellence, innovation, and sustainability. With more than 1,700 awards, they are the only firm to have twice been named 'Firm of the Year' by the American Institute of Architects.





**Disclaimer:**

The information contained in this brochure and any other materials supplied to you by Knight Dragon Developments Limited (the "Company") in relation to the Property at Greenwich Peninsula (the "Information") does not form part of any offer or contract and must not be relied upon as statements or representations of fact. The Company does not represent that the Information is accurate, comprehensive, verified or complete, and shall accept no liability for the accuracy or completeness of the Information or for any reliance placed by any person on the Information. No representations, warranties or undertakings are given in relation to the Property. Any representation, condition or warranty which might be implied or incorporated into the Information by statute, common law or otherwise is excluded to the fullest extent permitted by law. All of the text, photographs, images and plans shown in relation to the Property are indicative and are not necessarily comprehensive. Any areas, measurements or distances given are approximate only. Any reference to alterations to, or use of any part of the Property is not a statement that any necessary planning, building regulations or other consent has been obtained. These matters must be verified by any intending buyer/lessee. Any intending buyer/lessee must satisfy himself by inspection or otherwise as to the correctness of any information given about the Property. The Company will not be liable to any recipient of the Information for any loss or damage, whether in contract, tort (including negligence), breach of statutory duty, or otherwise, even if foreseeable, arising under or in connection with use of, or inability to use, the Information. In particular, The Company will not be liable for: loss of profits, sales, business, or revenue; business interruption; loss of anticipated savings; loss of business opportunity, goodwill or reputation; or any indirect or consequential loss or damage. Nothing in this disclaimer shall exclude the Company's liability for death or personal injury resulting from the Company's negligence. All intellectual property rights whether registered or unregistered in any information, content, materials, data or processes contained in the Information belong to the Company or its licensed source. All rights of the Company in such intellectual property are hereby reserved. No part of the Information may be reproduced in any material form (including storing it in any medium by electronic means) without the written permission of the copyright owner.

Designed by Black & Gray





KNIGHT DRAGON

---



GREENWICH  
PENINSULA