



Eaton court, Eaton Road

Sutton, SM2 5DZ

Offers in the region of £290,000

This ground floor apartment, boasting two double bedrooms, is being sold with no onward chain. Situated in South Sutton, it offers a peaceful and convenient location just a short 10-minute walk from the mainline station. The property is beautifully presented, featuring bright and spacious interiors with a neutral theme. The accommodation includes a bay fronted lounge, a bay fronted master bedroom, a second double bedroom with a rear aspect, a modern kitchen equipped with space for free-standing appliances, a modern white bathroom suite with an obscure glazed window, power shower, and heated towel rail. Additional advantages of this property are the recently upgraded double glazed windows, fitted storage cupboards, entry phone system, well-maintained communal areas and gardens, as well as private residents' allocated parking.

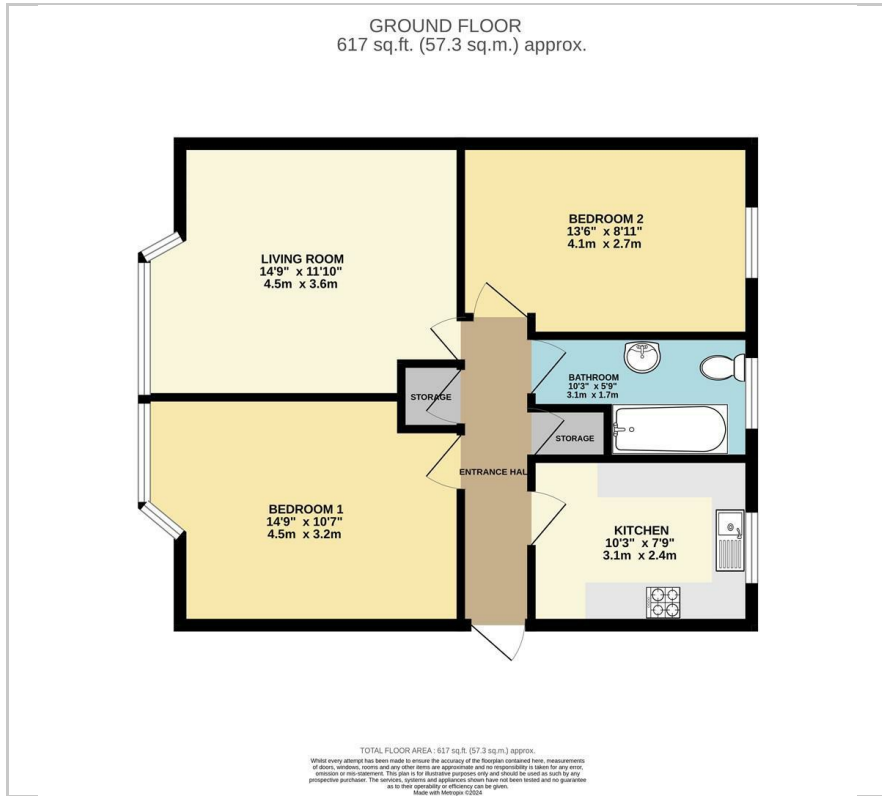
Viewing

Please contact our Newkeys4me Estate Agent Office on 02086439490 if you wish to arrange a viewing appointment for this property or require further information.

- Ground floor apartment
- Highly sought after South Sutton location
- Bright & spacious accommodation
- Bay fronted living room
- Two double bedrooms
- Bespoke kitchen
- Modern bathroom with power shower
- Private allocated parking
- Long lease
- No onward chain



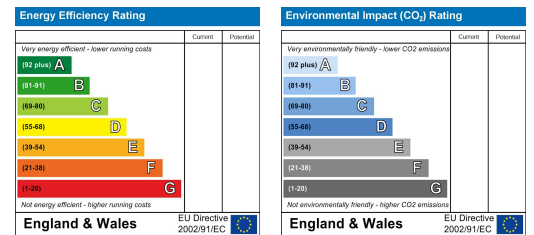
Floor Plan



Area Map



Energy Efficiency Graph



These particulars, whilst believed to be accurate are set out as a general outline only for guidance and do not constitute any part of an offer or contract. Intending purchasers should not rely on them as statements of representation of fact, but must satisfy themselves by inspection or otherwise as to their accuracy. No person in this firm's employment has the authority to make or give any representation or warranty in respect of the property.