



Camilla Court 56 Grange Road

Sutton, SM2 6SJ

Asking price £240,000

Sold with no onward chain! This exceptionally bright and spacious one-bedroom, second-floor apartment is located in a highly sought-after area of South Sutton. Offering 50 sqm of well-proportioned living space, the property features a generous entrance hall with built-in storage, a large front-facing living room, a fully fitted kitchen, and a part-tiled bathroom with a shower. The rear-facing bedroom comes with fitted wardrobes. Additional benefits include recently upgraded double-glazed windows, a secure entry phone system, and an allocated parking space for residents.

- Ideal first time purchase
- Great buy to let investment
- 2nd floor position
- Wall mounted electric radiators
- Upgraded double glazed windows
- Spacious room dimensions
- Private residents parking
- Sought after block and location
- Easy access to Sutton train station
- Frequent local bus network

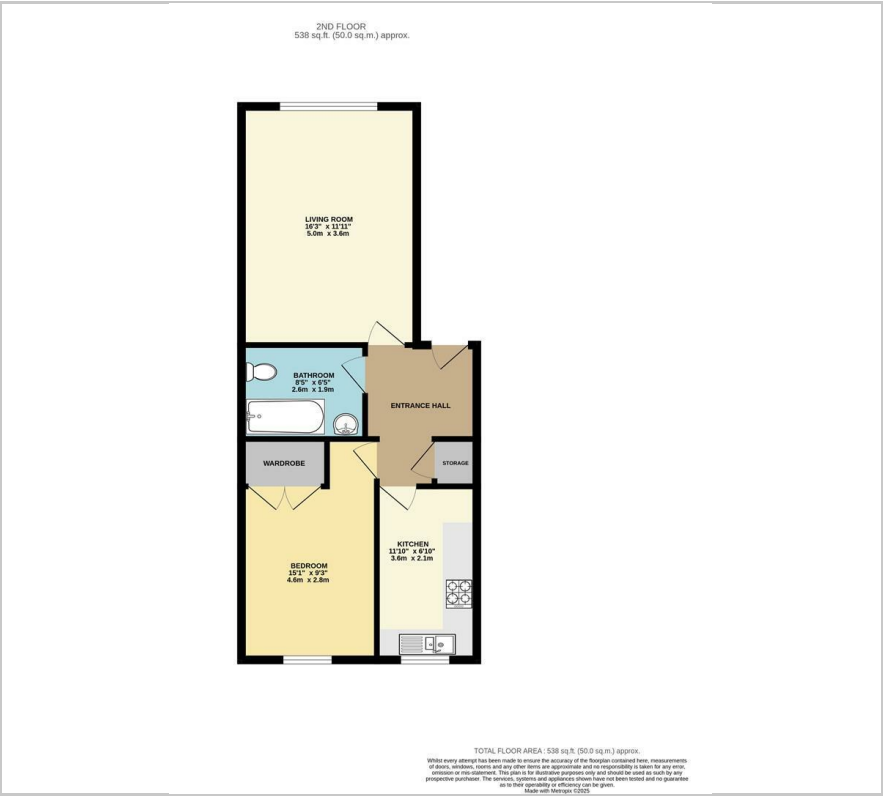
Viewing

Please contact our Newkeys4me Estate Agent Office on 02086439490

if you wish to arrange a viewing appointment for this property or require further information.



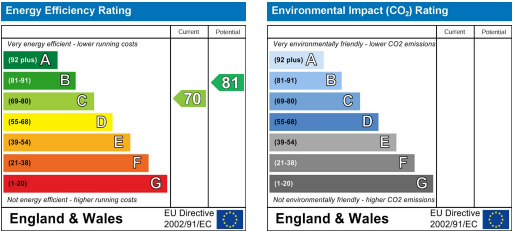
Floor Plan



Area Map



Energy Efficiency Graph



These particulars, whilst believed to be accurate are set out as a general outline only for guidance and do not constitute any part of an offer or contract. Intending purchasers should not rely on them as statements of representation of fact, but must satisfy themselves by inspection or otherwise as to their accuracy. No person in this firms employment has the authority to make or give any representation or warranty in respect of the property.