



49 Rosebank

Epsom, KT18 7RT

£1,800 Per month

Available 1st November 2024 - Unfurnished! Enjoying a quiet and convenient cul-de-sac position this contemporary themed Two double bedroom ground floor maisonette offers wonderful accommodation comprising; private entrance & porch. Large front aspect lounge with feature fire place, fully equipped kitchen with direct garden access with separate utility room. Bespoke bathroom suite with power shower, front aspect master bedroom with rear aspect 2nd bedroom. To the rear is a large maintained garden with patio leading to lawn with BBQ area and additional storage shed with power.

- Available 1st November 2024
- Ground floor maisonette
- Two double bedrooms
- Luxury bathroom suite
- Modern kitchen with separate utility room
- Covered side access
- 90' East facing garden
- BBQ area and storage shed
- Residents parking permits available
- Easy access to Town center & mainline train station

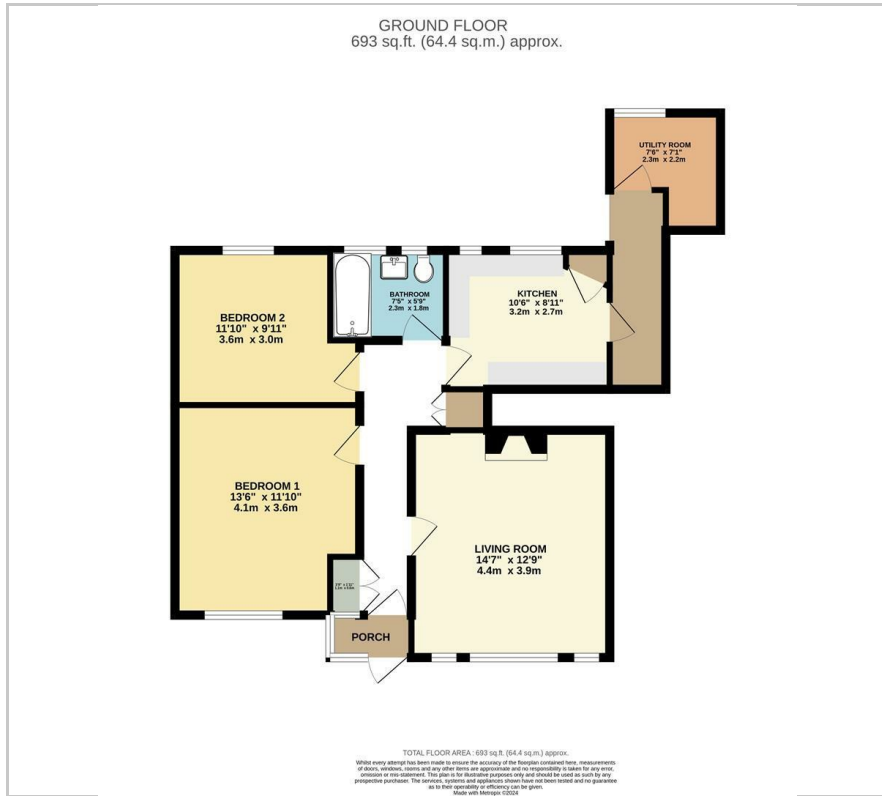
Viewing

Please contact our Newkeys4me Estate Agent Office on 02086439490

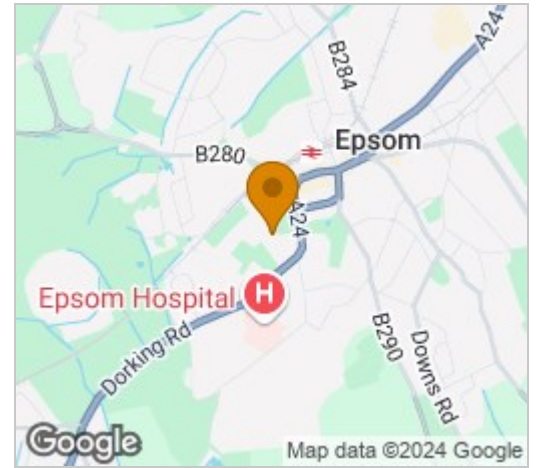
if you wish to arrange a viewing appointment for this property or require further information.



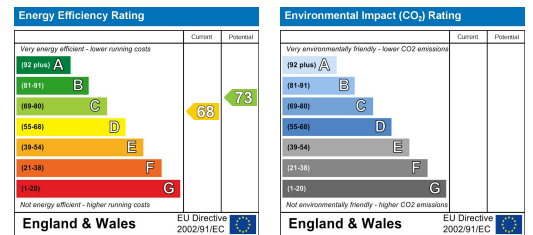
Floor Plan



Area Map



Energy Efficiency Graph



These particulars, whilst believed to be accurate are set out as a general outline only for guidance and do not constitute any part of an offer or contract. Intending purchasers should not rely on them as statements of representation of fact, but must satisfy themselves by inspection or otherwise as to their accuracy. No person in this firm's employment has the authority to make or give any representation or warranty in respect of the property.