



## Coach House Mews, Mill Street

Redhill, RH1 6RT

**Asking price £160,000**

Sold with no onward chain! This conveniently located One double bedroom maisonette is a superb first time buy or rental investment. Benefiting internally from a generous size entrance with storage cupboard, lounge with patio door to the private terrace, modern fitted kitchen with combination boiler white bathroom suite with power shower and front aspect bedroom. Further features include double glazing, residents parking and a long lease in excess of 900 years.

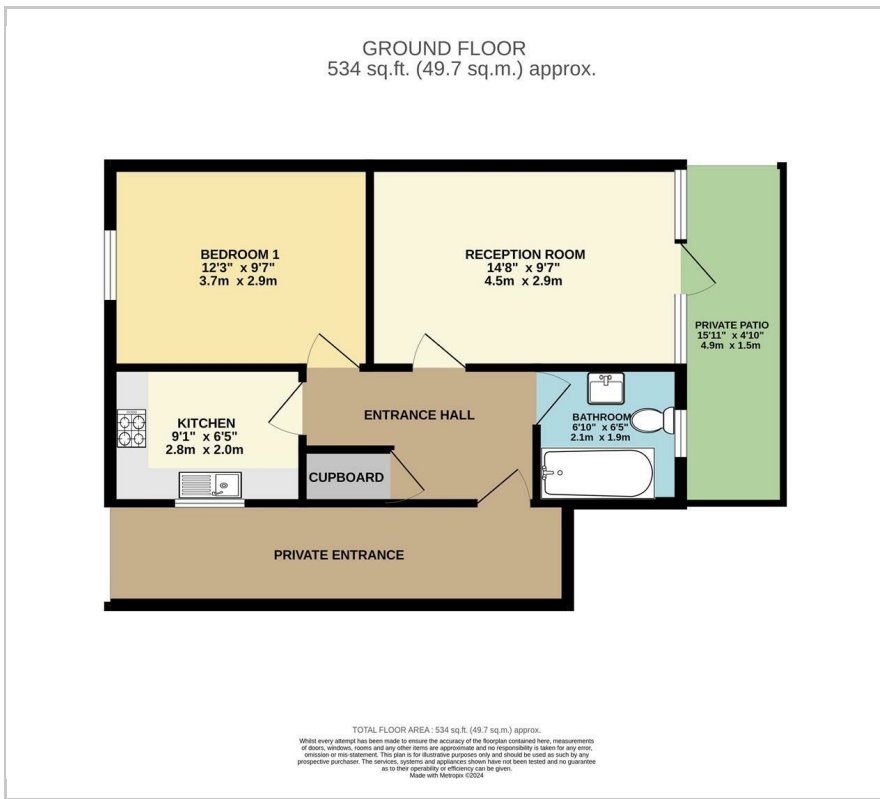
- Newly redecorated throughout
- Private entrance
- Residents parking
- One double bedroom
- Lounge with private access to secluded terrace
- Modern style kitchen with space for appliances
- White bathroom suite with shower & heated towel rail
- Fully double glazed & gas centrally heated
- Sold with no onward chain
- X2 train stations within 0.6 miles

### Viewing

Please contact our Newkeys4me Estate Agent Office on 02086439490 if you wish to arrange a viewing appointment for this property or require further information.



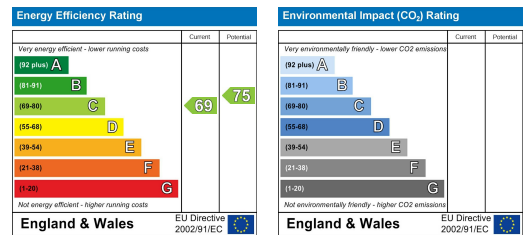
## Floor Plan



## Area Map



## Energy Efficiency Graph



These particulars, whilst believed to be accurate are set out as a general outline only for guidance and do not constitute any part of an offer or contract. Intending purchasers should not rely on them as statements of representation of fact, but must satisfy themselves by inspection or otherwise as to their accuracy. No person in this firm's employment has the authority to make or give any representation or warranty in respect of the property.