



Woodfield Court Benhill Wood Road

Sutton, SM1 3SL

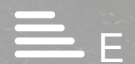
Offers over £275,000

Sold with No Onward chain!. This exceptionally bright and spacious Two double bedroom ground floor purpose built apartment enjoys an extremely convenient residential location giving access to Sutton's outstanding State & Grammar Schools as well as two mainline train stations and a frequent bus service to Morden Under Ground Station. Further features include a fully integrated high gloss finished kitchen that is open plan to the large lounge with laminate wood flooring and pleasant garden views. Both bedrooms are double in size with laminate wood flooring and garden views. The bathroom is bespoke in design with space saver bath and power shower, heated towel rail and is fully tiled. Complimenting this must see property is ample fitted storage cupboards, secure entry phone system and private covered allocated parking.

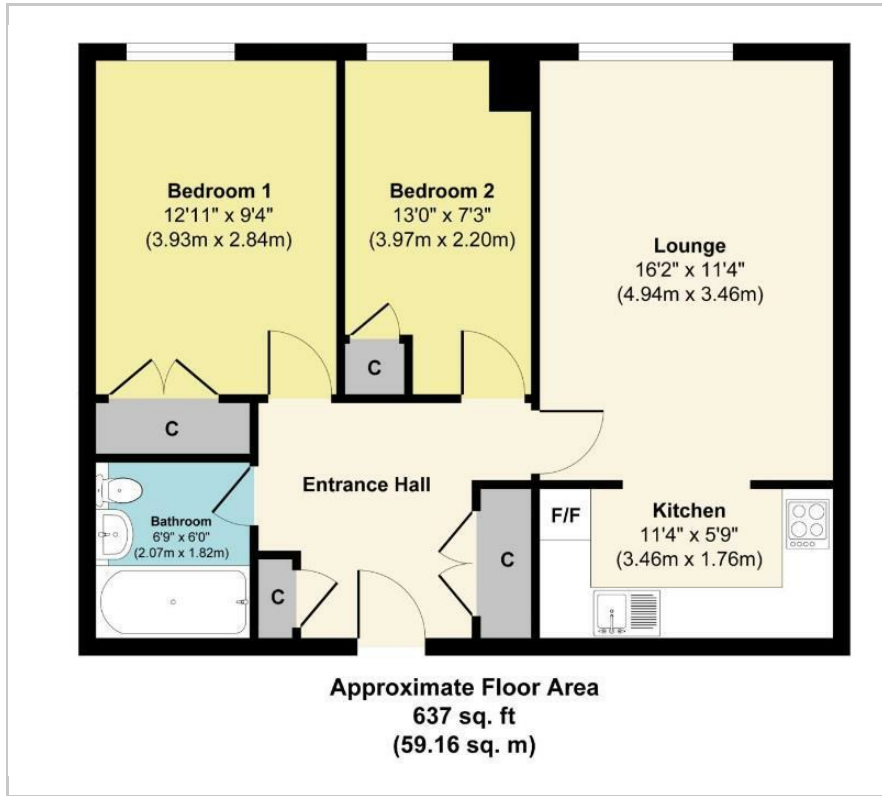
- Ground floor apartment
- Open plan kitchen living room
- Neutrally decorated throughout
- Laminate wood flooring and double glazing
- Large entrance hall with fitted storage
- Two double bedrooms
- Fully tiled bathroom with power shower
- Private allocated parking
- Ideal first time buy or rental investment
- No onward chain!

Viewing

Please contact our Newkeys4me Estate Agent Office on 02086439490 if you wish to arrange a viewing appointment for this property or require further information.



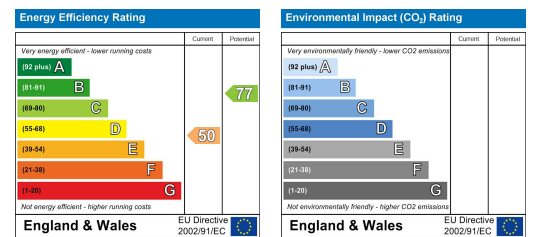
Floor Plan



Area Map



Energy Efficiency Graph



These particulars, whilst believed to be accurate are set out as a general outline only for guidance and do not constitute any part of an offer or contract. Intending purchasers should not rely on them as statements of representation of fact, but must satisfy themselves by inspection or otherwise as to their accuracy. No person in this firm's employment has the authority to make or give any representation or warranty in respect of the property.