



3 Conifer Gardens

Sutton, SM1 3JT

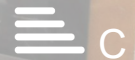
Asking price £299,950

Sold with an extended lease and No onward chain! Located yards from Sutton Common mainline train station within a small block of x4 apartments this Two double bedroom 1st floor property with private loft is presented in good order throughout and features; spacious lounge dining room, modern equipped kitchen with new combination boiler, bathroom with power shower and is fully double glazed. To the front and rear are communal gardens, bin store, visitor parking and private residents garage.

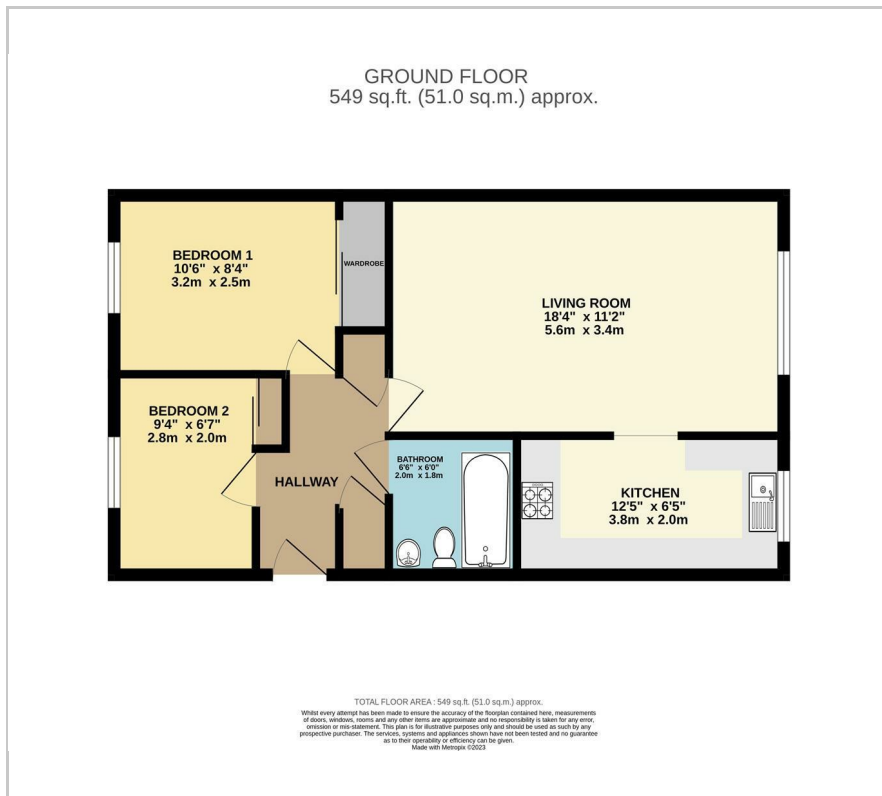
- Sold with a new extended lease
- 1st floor apartment
- Convenient & sought after location
- Spacious lounge dining room
- Modern fitted kitchen
- New central heating boiler
- Two double bedrooms
- Private garage
- Ideal first time buy or rental investment
- Sold with no onward chain

Viewing

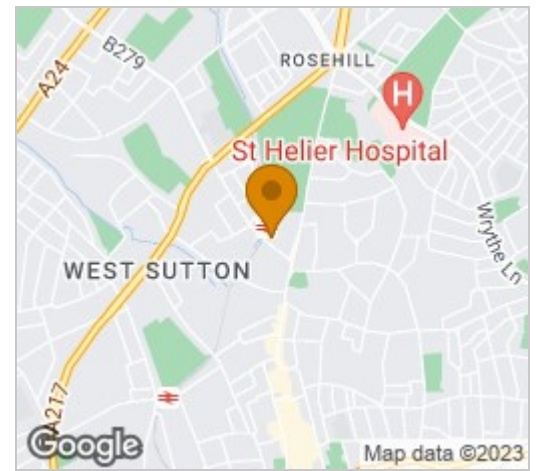
Please contact our Newkeys4me Estate Agent Office on 02086439490 if you wish to arrange a viewing appointment for this property or require further information.



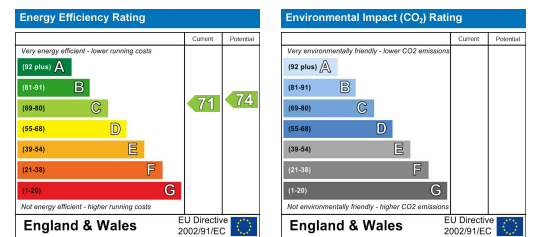
Floor Plan



Area Map



Energy Efficiency Graph



These particulars, whilst believed to be accurate are set out as a general outline only for guidance and do not constitute any part of an offer or contract. Intending purchasers should not rely on them as statements of representation of fact, but must satisfy themselves by inspection or otherwise as to their accuracy. No person in this firm's employment has the authority to make or give any representation or warranty in respect of the property.