



31 Shaldon Drive

Morden, SM4 4BE

Asking price £625,000

Sold with no onward chain! A wonderful "Wates" built end of terraced Three bedroom family home enjoying a quiet & convenient residential setting opposite open woodland and yards from the outstanding Hillcross Primary school. Benefiting internally from a bright & spacious through lounge dining room with direct garden access, extended kitchen, downstairs w/c, 1st floor separate w/c plus bespoke bathroom suite with walk in double shower. To the rear is a mature Easterly facing garden with raised flower beds & borders, side access and detached garage (currently home office/workshop), to the front is paved off street parking for multiple vehicles.

- Huge scope to extend (STPP)
- Highly sought after & convenient location
- Bright sunny & spacious accommodation
- Patio doors to patio
- Side & rear access
- Three family bedrooms
- Three separate toilets
- Detached garage with under floor heating
- Off street parking
- No onward chain!

Viewing

Please contact our Newkeys4me Estate Agent Office on 02086439490 if you wish to arrange a viewing appointment for this property or require further information.



3



1

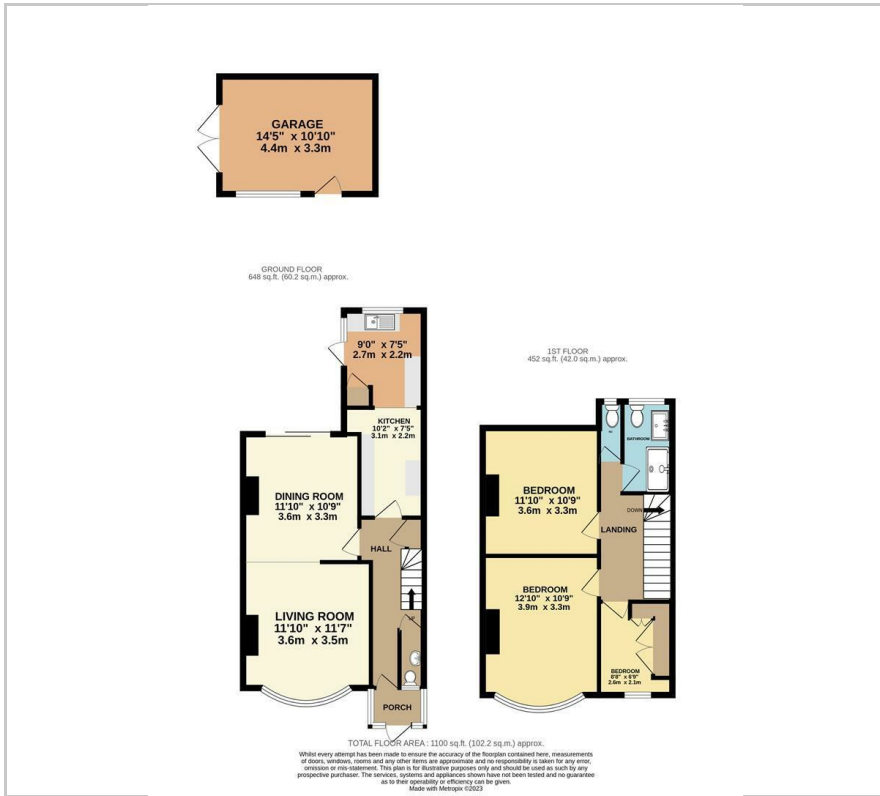


1



D

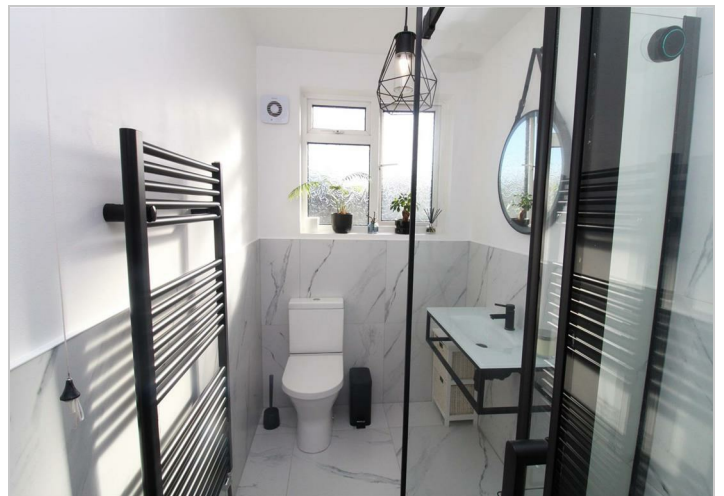
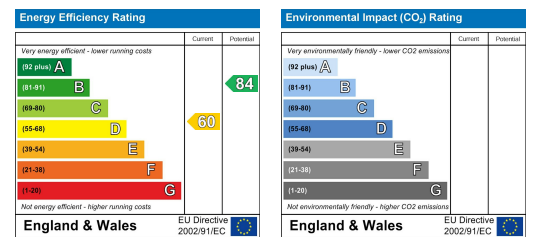
Floor Plan



Area Map



Energy Efficiency Graph



These particulars, whilst believed to be accurate are set out as a general outline only for guidance and do not constitute any part of an offer or contract. Intending purchasers should not rely on them as statements of representation of fact, but must satisfy themselves by inspection or otherwise as to their accuracy. No person in this firm's employment has the authority to make or give any representation or warranty in respect of the property.