



# Apartment 4, By the Green Court

Maidenhead, Berkshire

APARTMENT 4, BY THE GREEN COURT





# Details

## PROPERTY PROFILE

---



- Kitchens by Nobilia
- Gas hob with stainless steel splashback
- Bathrooms by Saneux
- Amtico flooring to reception and main living area
- 2 Bedrooms, 2 Bathrooms
- Large open plan kitchen / living room
- Wet underfloor heating
- Balcony with composite deck
- Allocated parking and guest parking

This beautifully presented and spacious first-floor apartment is located in the exclusive, gated By The Green Court development. Designed with modern living in mind, this attractive property offers the perfect blend of luxury and practicality, making it an excellent choice for commuters, downsizers, or investors.

The apartment is accessed via a generously sized hallway with a secure intercom system, setting the tone for the premium interior finish and stylish layout within. The open-plan living area combines dining, office, and reception space, creating a versatile and inviting environment. The high-end Nobilia kitchen, installed by Rushden Homes in 2018, is fitted with Bosch integrated appliances, including a microwave, dishwasher, and washing machine. A gas hob with extractor hood and soft-closing storage drawers complete the sleek and functional design.

Two double bedrooms provide ample living space, including a principal suite with a luxurious ensuite shower room and dressing area. The second bedroom is equally spacious and served by a beautifully finished guest shower/bathroom. Additional features include a storage closet with a pressurised Megaflo system and a private balcony patio, accessed via French doors from the living area, perfect for outdoor relaxation.

Constructed in 2018, the property benefits from three years remaining on its NHBC warranty and boasts excellent energy efficiency. Residents also enjoy allocated parking, guest parking, a secure bike store, and a private garden, surrounded by a tall red brick wall for enhanced privacy.

# Location

---

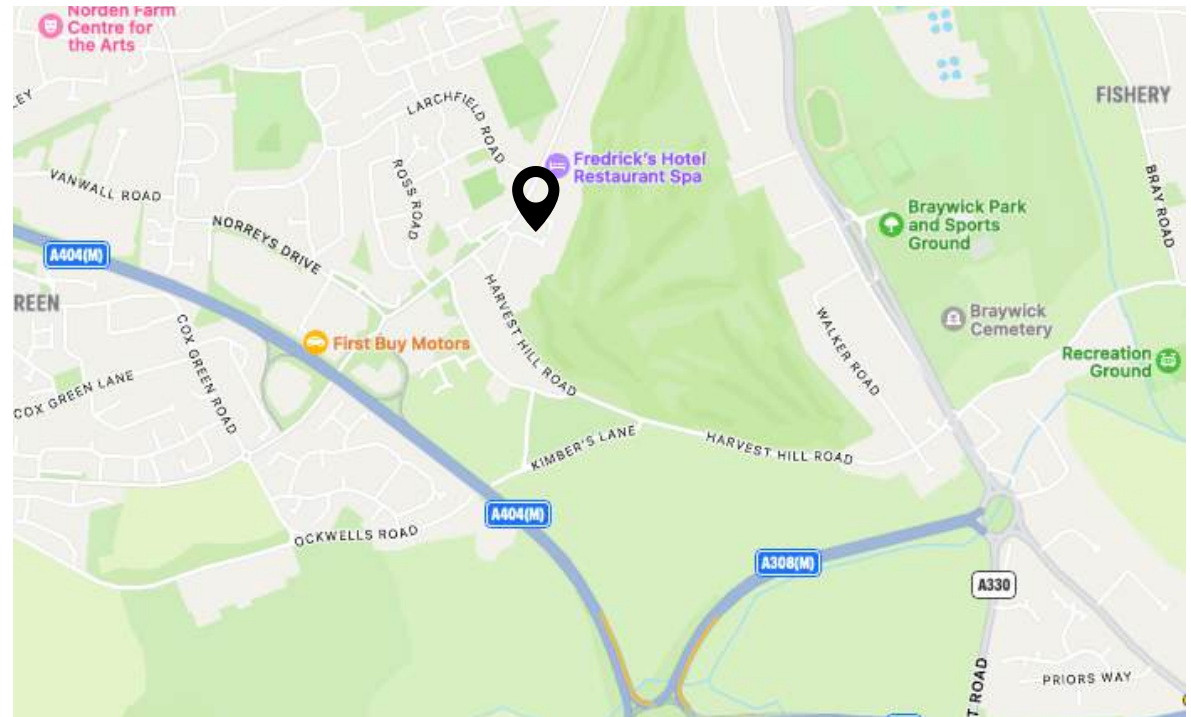
## THE NEIGHBOURHOOD

---

Situated just 0.6 miles from Maidenhead town centre and the mainline train station, this apartment offers unrivalled convenience. Maidenhead's regeneration has brought a wealth of shops, leisure facilities, and restaurants to the area.

Nearby picturesque villages like Bray, Cookham, and Marlow offer boutique shopping and fine dining, while Windsor and Ascot provide iconic attractions and events. Excellent transport links, including the M4, M25, and Heathrow Airport, add to this property's appeal.

Apartment 4  
By the Green Court  
Shoppenhangers Road  
Maidenhead, Berkshire  
SL6 2QD





APARTMENT 4, BY THE GREEN COURT



APARTMENT 4, BY THE GREEN COURT





APARTMENT 4, BY THE GREEN COURT



APARTMENT 4, BY THE GREEN COURT





APARTMENT 4, BY THE GREEN COURT



APARTMENT 4, BY THE GREEN COURT





APARTMENT 4, BY THE GREEN COURT



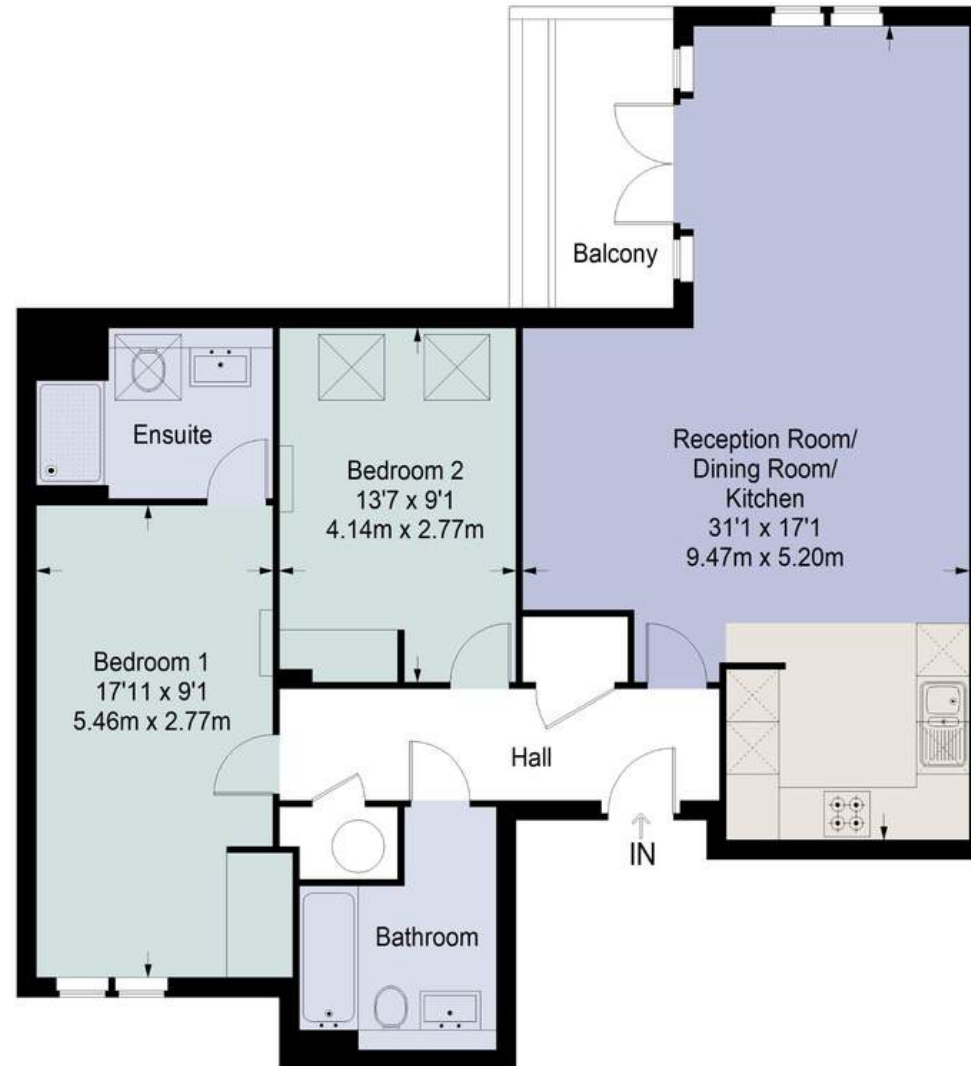


APARTMENT 4, BY THE GREEN COURT





## By the Green Court



**Apartment Four = 916 sq ft**

Approximate Gross Internal Area  
APARTMENT FOUR = 916 sq ft / 85.10 sq m  
Total = 916 sq ft / 85.10 sq m

This plan is for layout guidance only. Not drawn to scale unless stated. Windows and door openings are approximate. Whilst every care is taken in the preparation of this plan, please check all dimensions, shapes and compass bearings before making any decisions reliant upon them. (ID357409)

APARTMENT 4, BY THE GREEN COURT

# Your Managing Partner

Fisher & Partners is transforming the way  
property is sold.

We're committed to providing exceptional  
service from start to sale, to make your home  
buying or selling experience as smooth and  
successful as possible.

# Team



Dane Spelina  
Managing Partner  
Maidenhead & Surrounding Villages Region



---

F i s h e r   &   P a r t n e r s

---

☎ 01628 968 989

🖱 [www.fisherandpartners.com](http://www.fisherandpartners.com)

✉ [dane@fisherandpartners.com](mailto:dane@fisherandpartners.com)



SCAN TO BOOK A VIEWING

Contact Us  
Today

F I S H E R   &   P A R T N E R S

