



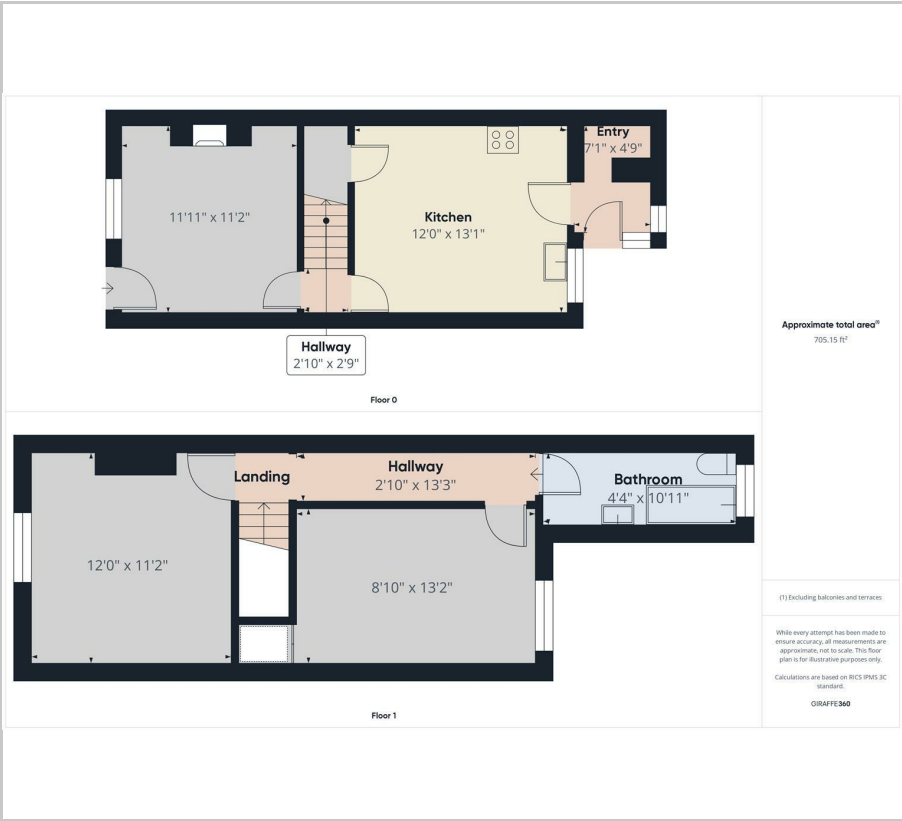
115 Mansfield Road

, Sheffield, S12 2AJ

Asking price £130,000



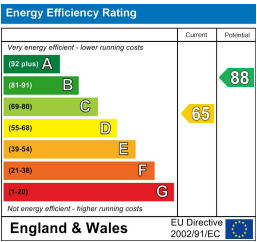
Floor Plan



Area Map



Energy Efficiency Graph



Viewing

Please contact our Ready Steady Move Sales Office on 0114 395 1722 if you wish to arrange a viewing appointment for this property or require further information.

- MID STONE FRONT TERRACE
- TWO DOUBLE BEDROOMS
- MULTI FUEL STOVE
- OFF SHOT UTILITY ROOM
- RAISED DECKING
- NO ONWARD CHAIN
- VIEWING IS ESSENTIAL
- EPC RATING D
- COUNCIL TAX BAND A
- FREEHOLD



Ready Steady MOVE are delighted to market this two double bedroom stone fronted mid terrace house in the sought after postcode of S12. The property is ideally located with easy access to the City Centre, close to local amenities and has good public transport links.

The property which is tastefully decorated throughout briefly comprises; front living room with feature fireplace having a fitted multi fuel stove, inner lobby with stairway access to the first floor and a rear dining kitchen with a range of matching wall and base units together with an off shot utility entrance porch.

To the first floor are two double bedrooms and an off shot modern white bathroom with underfloor heating.

Externally the property has a front forecourt together with a no through terrace garden to the rear with lawned area, planted borders and a raised decked seating area being ideal for outside entertaining and alfresco dining.



These particulars, whilst believed to be accurate are set out as a general outline only for guidance and do not constitute any part of an offer or contract. Intending purchasers should not rely on them as statements of representation of fact, but must satisfy themselves by inspection or otherwise as to their accuracy. No person in this firms employment has the authority to make or give any representation or warranty in respect of the property.