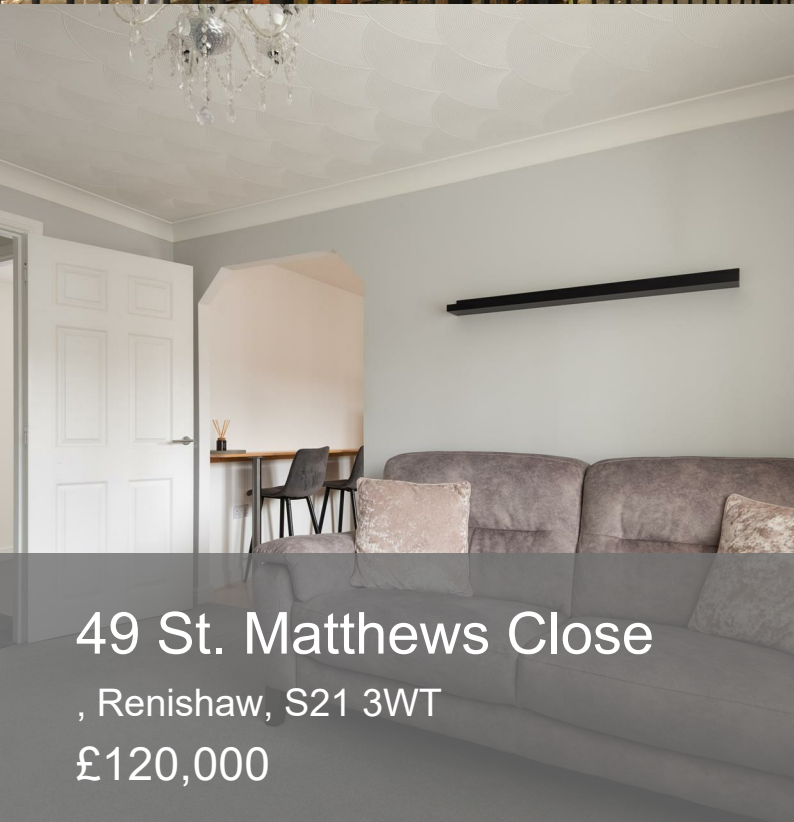




ESTATE & LETTING AGENCY



49 St. Matthews Close

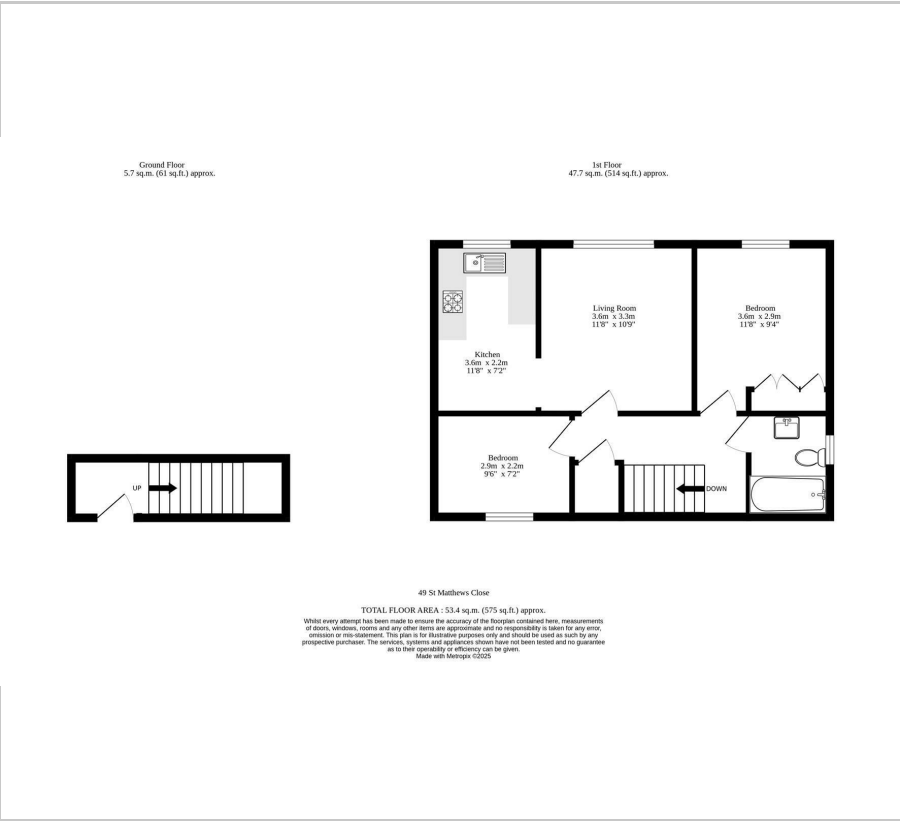
, Renishaw, S21 3WT

£120,000





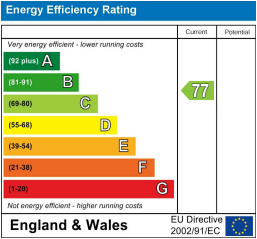
Floor Plan



Area Map



Energy Efficiency Graph



Viewing

Please contact our Ready Steady Move Sales Office on 0114 395 1722 if you wish to arrange a viewing appointment for this property or require further information.

- TWO BEDROOMS
- FIRST FLOOR FLAT
- MODERN AND SPACIOUS
- ALLOCATED PARKING THROUGHOUT
- GREAT LOCAL AMENITIES
- OPEN PLAN KITCH/DINER
- POPULAR RESIDENTIAL AREA
- LEASEHOLD
- EPC RATING C
- COUNCIL TAX BAND A



Ready Steady MOVE are delighted to market this modern spacious first floor flat situated in the popular residential area of Renishaw with great local amenities and good road links to the M1 motorway, Sheffield and Chesterfield City Centre.

The property comprises of an entrance hallway, a lounge, a kitchen/diner with wall and base units with integrated appliances.

There is a bright spacious master bedroom, a further good sized bedroom and a bathroom.

The property benefits from its own private entrance and has one allocated parking space.



These particulars, whilst believed to be accurate are set out as a general outline only for guidance and do not constitute any part of an offer or contract. Intending purchasers should not rely on them as statements of representation of fact, but must satisfy themselves by inspection or otherwise as to their accuracy. No person in this firms employment has the authority to make or give any representation or warranty in respect of the property.