



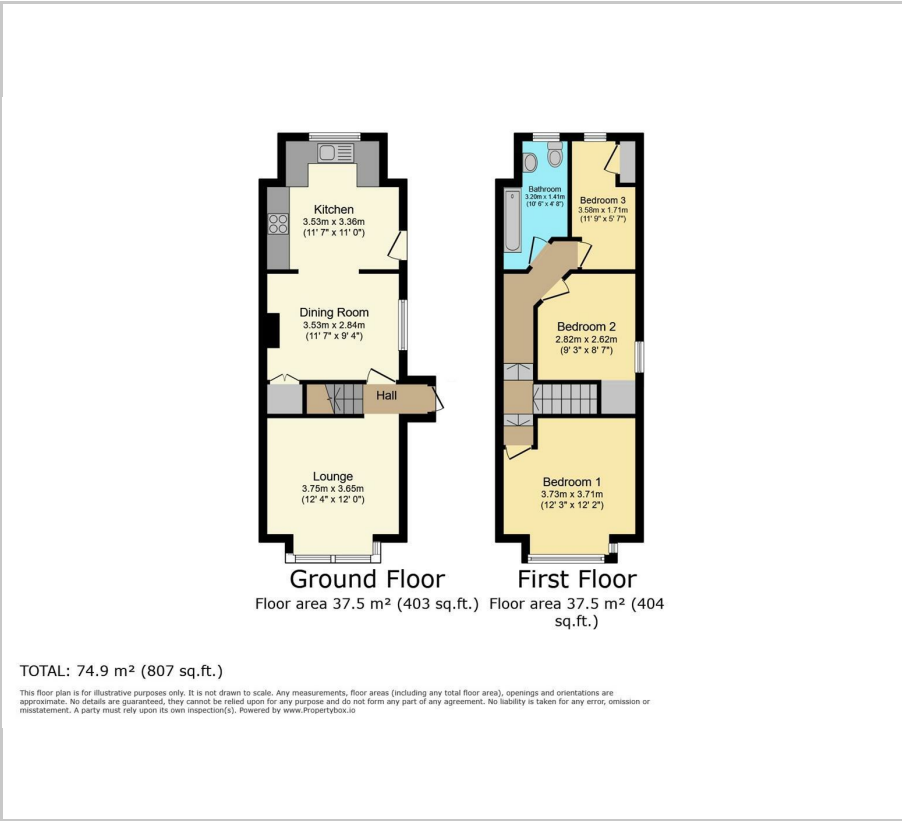
14 Ridgehill Grove

, Sheffield, S12 2GJ

£210,000



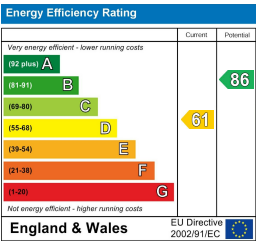
Floor Plan



Area Map



Energy Efficiency Graph



Viewing

Please contact our Ready Steady Move Sales Office on 0114 395 1722 if you wish to arrange a viewing appointment for this property or require further information.

- SEMI-DETACHED
- THREE BEDROOMS
- MODERN THROUGHOUT
- BAY WINDOWED LOUNGE
- OPEN PLAN KITCHEN/DINER
- EXTENDED
- OFF ROAD PARKING
- EPC RATING D
- COUNCIL TAX BAND A
- LEASEHOLD



Ready Steady MOVE are delighted to market this stunning three bedroom semi-detached property in a highly sought-after area and is well placed for easy access to local amenities (including reputable primary and secondary schools) whilst having excellent transport links.

This property comprises of a welcoming lounge, a dining room, a modern kitchen with a range of wall and bases units and has been extended at the rear creating ample space.

To the first floor there is a master bedroom, a second double bedroom and a third study/bedroom.

The rear of the garden is landscaped garden with a patio area.

At the front of the property is a driveway.



These particulars, whilst believed to be accurate are set out as a general outline only for guidance and do not constitute any part of an offer or contract. Intending purchasers should not rely on them as statements of representation of fact, but must satisfy themselves by inspection or otherwise as to their accuracy. No person in this firms employment has the authority to make or give any representation or warranty in respect of the property.