

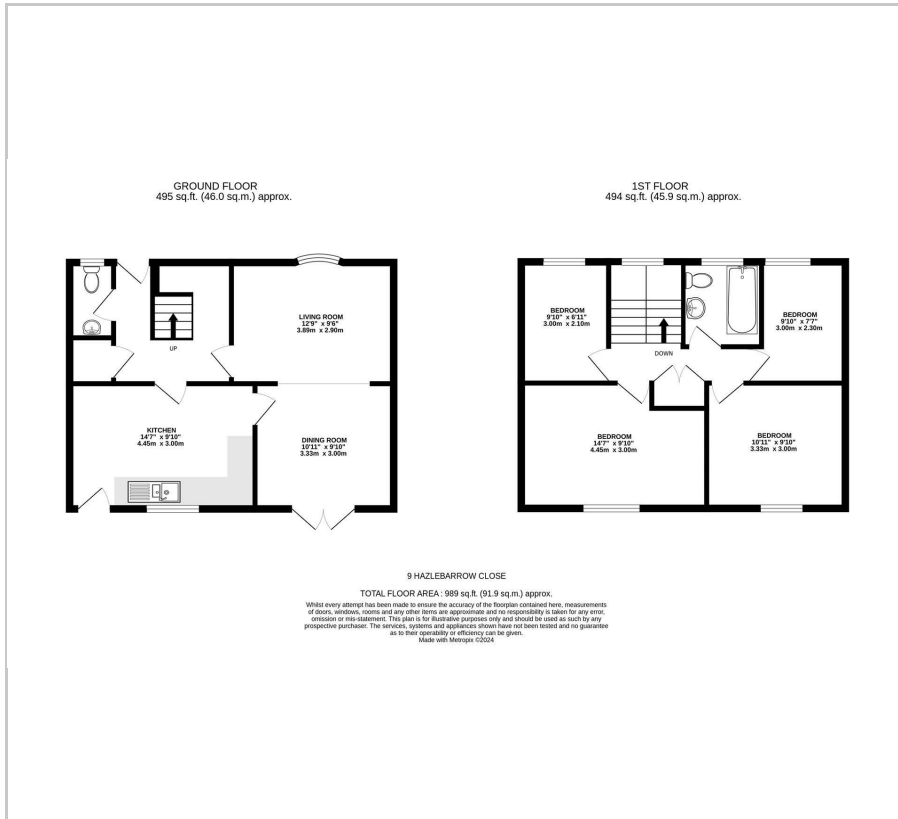


9 Hazlebarrow Close

, Sheffield, S8 8AL

Asking price £95,000

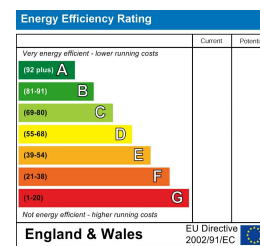
Floor Plan



Area Map



Energy Efficiency Graph



Viewing

Please contact our Ready Steady Move Sales Office on 0114 395 1722 if you wish to arrange a viewing appointment for this property or require further information.

- FOUR BEDROOMS
- NO CHAIN
- FRONT AND REAR GARDENS
- LOCAL AMENITIES NEAR BY
- COUNCIL TAX BAND A
- IN NEED OF MODERNISATION
- LARGE PLOT
- POPULAR LOCATION
- AWAITING EPC
- FREEHOLD



*** CASH BUYERS ONLY ***

Ready Steady MOVE are delighted to market this four bedroom semi-detached property located in the sought after of Jordanthorpe, S8. The property has great transport links and local amenities and would benefit from modernisation and would be available with NO CHAIN.

The property comprises of an entrance hall, a bay windowed lounge to the front and a dining room and kitchen at the rear. The kitchen is in need of modernisation with no integrated appliances.

To the first floor are two double bedrooms and single bedroom/study and a further bedroom and a bathroom.

The property also benefits from off street parking and is on a generous plot. There is a small garden to the front and a larger garden to the rear.

The council tax band is band A.



These particulars, whilst believed to be accurate are set out as a general outline only for guidance and do not constitute any part of an offer or contract. Intending purchasers should not rely on them as statements of representation of fact, but must satisfy themselves by inspection or otherwise as to their accuracy. No person in this firm's employment has the authority to make or give any representation or warranty in respect of the property.

4 Walseker Lane, Harthill, S26 7YJ

Tel: 0114 395 1722 Email: enquiries@readsteadymove.net <https://www.readsteadymove.net>