

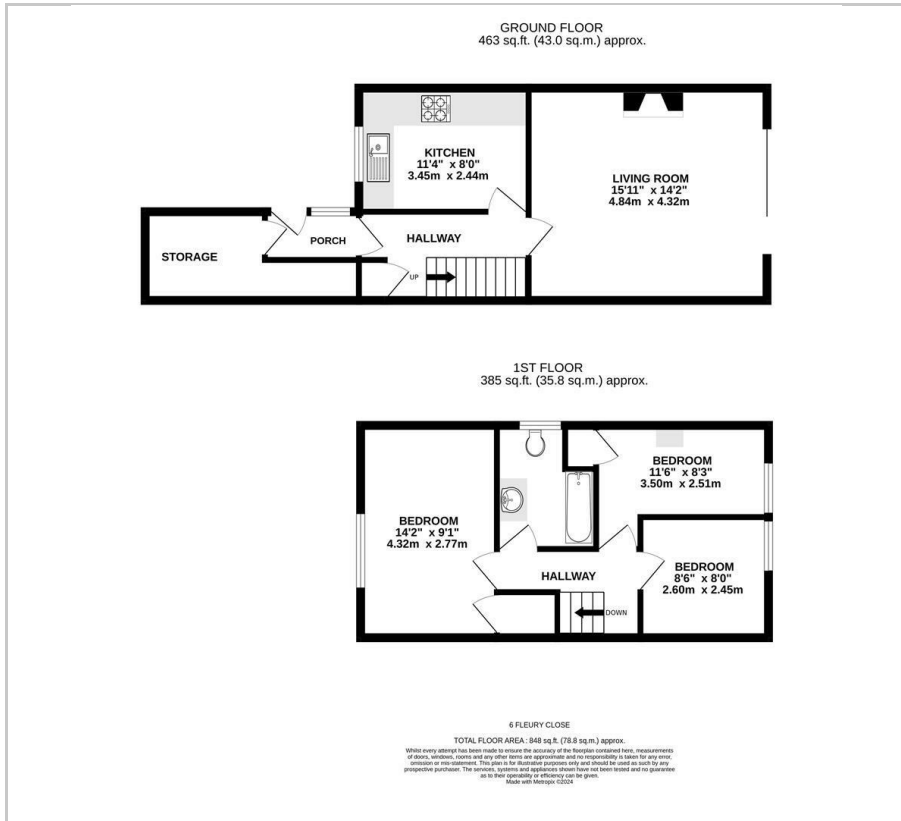


# 6 Fleury Close

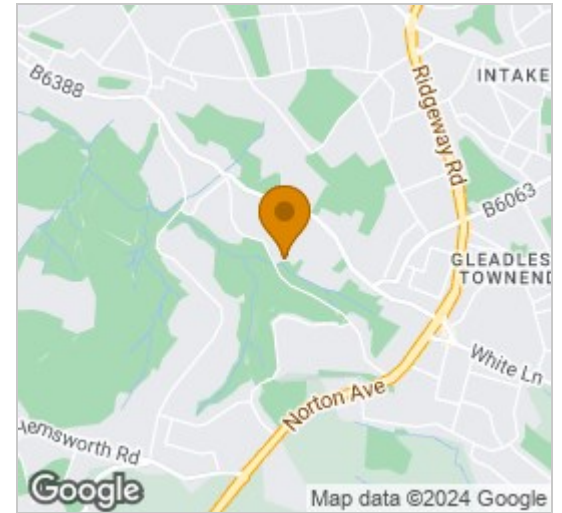
, Sheffield, S14 1QU

£120,000

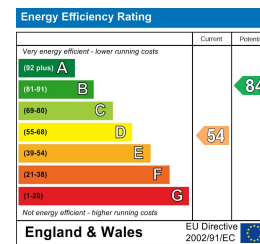
## Floor Plan



## Area Map



## Energy Efficiency Graph



## Viewing

Please contact our Ready Steady Move Sales Office on 0114 395 1722 if you wish to arrange a viewing appointment for this property or require further information.

- THREE BEDROOM
- NO CHAIN
- ON STREET PARKING
- EPC RATING E
- TOWNHOUSE
- MODERN THROUGHOUT
- FREEHOLD
- COUNCIL TAX BAND A



Ready Steady MOVE are delighted to market this spacious three bedroom mid town-house with NO ONWARD CHAIN. This property is located close to public transport links and local shops. A viewing is strongly advised to fully appreciate the size of the property.

The property comprises of an entrance lobby, a lounge area leading to the garden, a modern kitchen with fitted wall and base units, a storage space,

The first floor of the property is a landing with built in storage, a further double bedroom, and another bedroom, a good sized bathroom.

To both the front and rear of the property is a fully enclosed garden.



These particulars, whilst believed to be accurate are set out as a general outline only for guidance and do not constitute any part of an offer or contract. Intending purchasers should not rely on them as statements of representation of fact, but must satisfy themselves by inspection or otherwise as to their accuracy. No person in this firm's employment has the authority to make or give any representation or warranty in respect of the property.

4 Walseker Lane, Harthill, S26 7YJ

Tel: 0114 395 1722 Email: [enquiries@readysteadymove.net](mailto:enquiries@readysteadymove.net) <https://www.readysteadymove.net>