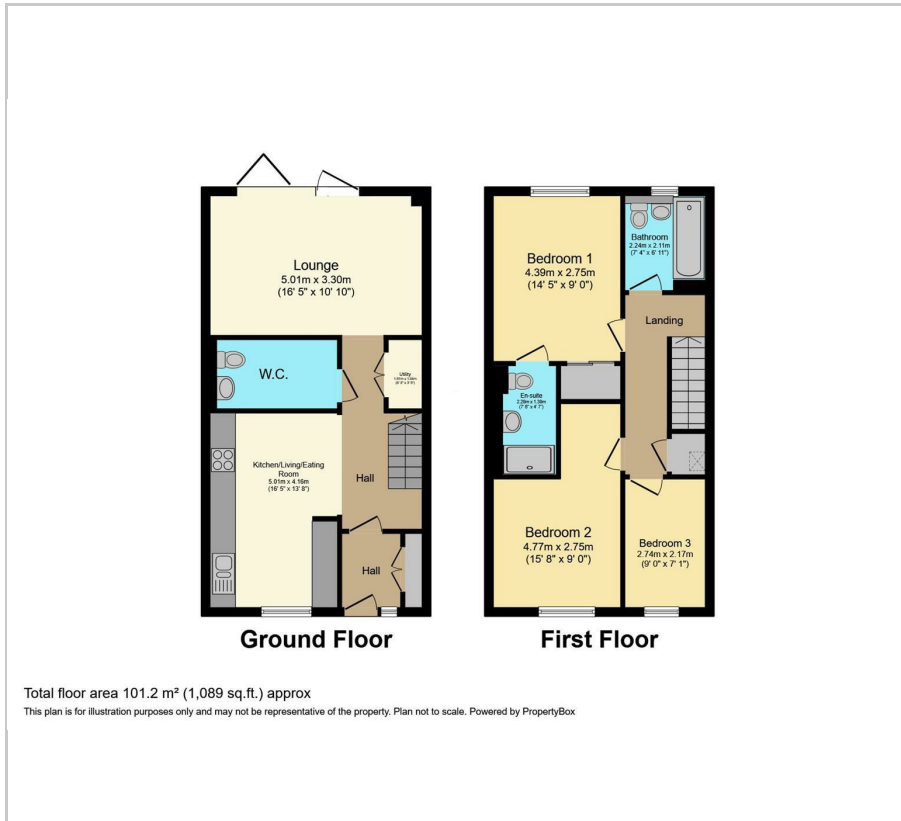




4 Canyon Meadow
Creswell, Worksop, S80 4UQ
£250,000



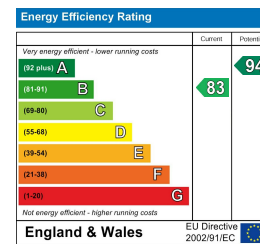
Floor Plan



Area Map



Energy Efficiency Graph



Viewing

Please contact our Ready Steady Move Sales Office on 0114 395 1722 if you wish to arrange a viewing appointment for this property or require further information.

- DETACHED PROPERTY
- BI-FOLD DOORS TO THE REAR
- MODERN FITTED KITCHEN WITH INTEGRATED APPLIANCES
- IMMACULATELY PRESENTED
- EPC RATING B
- THREE BEDROOMS
- DRIVEWAY
- FULLY ENCLOSED GARDEN
- COUNCIL TAX BAND C
- FREEHOLD



Ready Steady MOVE are delighted to market this well presented modern three bedroomed detached property located in the popular area of S80. This property is close to local amenities within Creswell and offers good commuter links being close to the M1.

The property comprises of an entrance hall, a contemporary kitchen fitted with a range of modern wall and base units and integrated appliances, a bright and spacious lounge with large bi-folding doors opening to the rear garden, a utility cupboard with space for a washer/dryer.

To the first floor of the property is a master bedroom with an ensuite, a second double bedroom, a bedroom/study and a family bathroom

At the front of the property is a driveway providing off street parking and to the rear of the property is an easily maintained enclosed lawned garden with a patio area.



These particulars, whilst believed to be accurate are set out as a general outline only for guidance and do not constitute any part of an offer or contract. Intending purchasers should not rely on them as statements of representation of fact, but must satisfy themselves by inspection or otherwise as to their accuracy. No person in this firm's employment has the authority to make or give any representation or warranty in respect of the property.

4 Walseker Lane, Harthill, S26 7YJ

Tel: 0114 395 1722 Email: enquiries@readysteadymove.net <https://www.readysteadymove.net>