



32 Laurel Terrace, Skellow , Doncaster, DN6 8AT

£130,000 - £140,000 Guide Price. Offered with no onward chain, this spacious three-bedroom end-terraced home is an excellent opportunity for buyers seeking a property with scope to modernise and add value.

The ground floor features a bright living room, kitchen, conservatory to the rear, and a convenient downstairs W/C. Upstairs, there are three good-sized bedrooms served by a shower room.

Outside, the property benefits from a generous rear garden and off-road parking to the front.

Situated close to local amenities and schools, the home also enjoys superb transport links with easy access to the A1 and M18, making it ideal for families and commuters alike.

This property represents a fantastic opportunity to create a wonderful family home in a popular and well-connected location.

Guide price £130,000

32 Laurel Terrace, Skellow , Doncaster, DN6 8AT



- 3 bed end terraced property
- Scope to modernise
- Close to schools & local amenities
- EPC rating: C
- Large rear garden
- Downstairs W/C & upstairs shower room
- Excellent motorway connections (A1 & M18)
- Conservatory to the rear
- No onward chain
- Council tax band A

Lounge

11'6" x 16'3" (3.53 x 4.96)

Kitchen/Diner

16'0" x 8'0" (4.88 x 2.44)

Storage Room

6'0" x 6'3" (1.84 x 1.93)

Storage Room

8'3" x 2'9" (2.52 x 0.85)

W/C

Conservatory

9'10" x 8'0" (3.01 x 2.44)

Master Bedroom

14'7" x 8'1" (4.46 x 2.48)

Bedroom 2

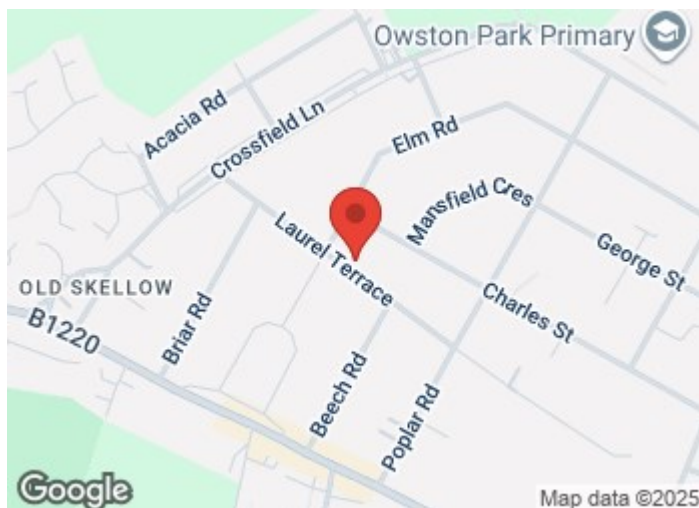
11'1" x 9'5" (3.39 x 2.88)

Bedroom 3

10'6" x 10'1" (3.22 x 3.09)

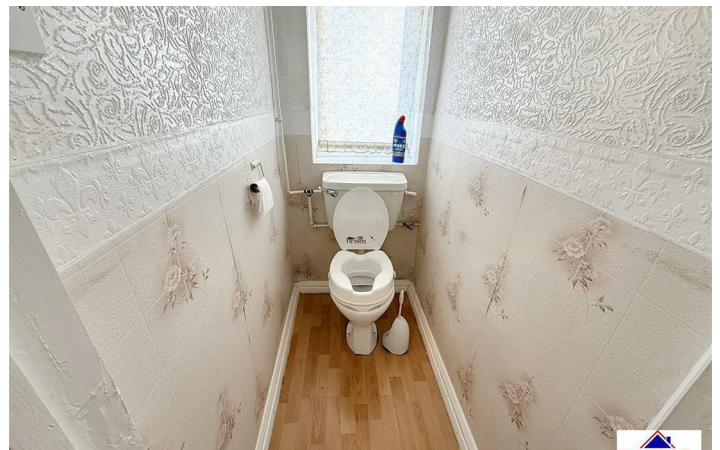
Shower Room

8'8" x 5'8" (2.65 x 1.74)

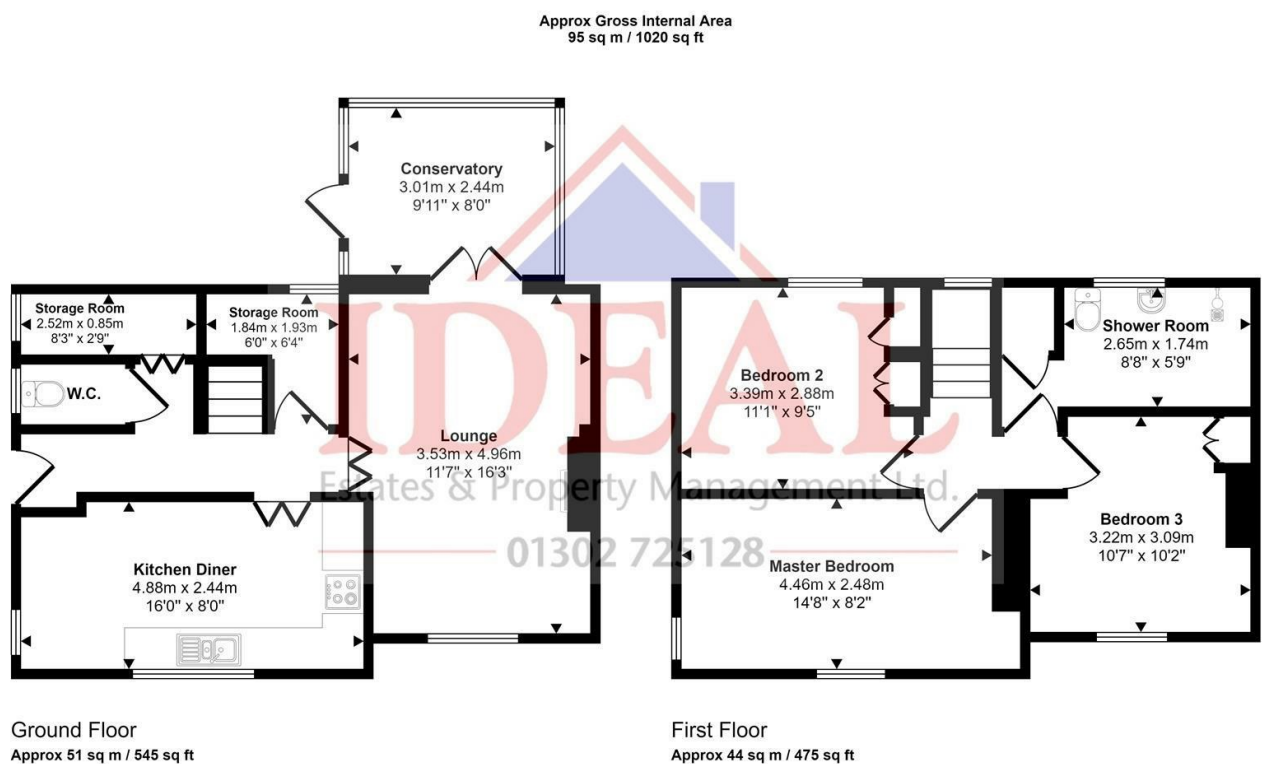


Directions

Skellow is a village in the Doncaster district, in the county of South Yorkshire, England. Historically part of the West Riding of Yorkshire, the village is roughly 5 miles north-west of Doncaster. The village falls in the Askern Spa Ward of Doncaster MBC. To the north and south is mixed farmland, the A1 runs immediately along the western edge of the village, and to the east Skellow merges with the adjacent village of Carcroft along the B1220 road.



Floor Plan



This floorplan is only for illustrative purposes and is not to scale. Measurements of rooms, doors, windows, and any items are approximate and no responsibility is taken for any error, omission or mis-statement. Icons of items such as bathroom suites are representations only and may not look like the real items. Made with Made Snappy 360.

These particulars, whilst believed to be accurate are set out as a general outline only for guidance and do not constitute any part of an offer or contract. Intending purchasers should not rely on them as statements of representation of fact, but must satisfy themselves by inspection or otherwise as to their accuracy. No person in this firms employment has the authority to make or give any representation or warranty in respect of the property.

