



11 Creek Drive, Woodlands, DN6 7FP

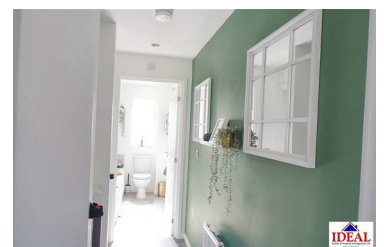
Offers over £199,950



Nestled in the serene surroundings of Creek Drive, Woodlands, this stunning semi-detached house is a remarkable find for those seeking modern living. Built in 2021, this new build property spans an impressive 861 square feet and boasts a contemporary design that is both stylish and functional. Upon entering, you are greeted by a spacious reception room that flows seamlessly into a beautifully appointed kitchen. The kitchen is a true highlight, featuring built-in appliances that cater to all your culinary needs, along with a separate dining area that is perfect for entertaining family and friends. The open-plan layout creates a warm and inviting atmosphere, ideal for modern lifestyles.

This home offers three well-proportioned bedrooms, providing ample space for a growing family or guests. The master bedroom is particularly noteworthy, as it includes an en-suite bathroom complete with a walk-in shower, ensuring a private retreat for relaxation. The additional two bedrooms are versatile and can be adapted to suit your needs, whether as children's rooms, guest spaces, or home offices.

The property is fitted with double-glazed windows throughout, enhancing energy efficiency and providing a peaceful environment. Outside the



- VIEWING IS ESSENTIAL ON THIS MODERN 3 BED SEMI DETACHED PROPERTY
- EN-SUITE TO MASTER BEDROOM WITH WALK IN SHOWER
- GOOD SIZED LOUNGE WITH FEATURE BAY WINDOW
- LEVEL 3 UPGRADED FEATURES ADDED TO THIS NEW BUILD HOME
- OFFERED WITH NO FORWARD CHAIN
- BEAUTIFULLY DESIGNED OPEN PLAN KITCHEN WITH INTEGRATED APPLIANCES
- IDEAL FOR A FIRST TIME BUYER A GREAT TURN KEY PROPERTY
- LARGER THAN AVERAGE CORNER PLOT WITH AMPLE PARKING
- COUNCIL TAX BAND B. GREAT EPC RATING B
- TWO MODERN BATHROOMS