



The Cottage Cross Hill, Skellow Road Old Skellow, Doncaster, DN6 8JW

GUIDE PRICE £365,000.00 to £375,000.00

Nestled in the picturesque village of Old Skellow, Doncaster, this charming detached cottage offers a delightful blend of historical character and potential. Set on a generous half-acre plot, the property boasts beautifully manicured gardens, an enchanting orchard filled with fruit trees, and a productive vegetable plot, perfect for those with a passion for gardening.

As you approach the cottage, a winding driveway leads you to ample parking space for several vehicles, ensuring convenience for both residents and guests. Inside, the home retains many original features that reflect its rich history, providing a unique charm that can be enhanced with modernisation. The layout includes three reception rooms, offering versatile spaces for relaxation and entertainment. The property comprises three well-proportioned double bedrooms, ideal for families or those seeking extra space. A family bathroom completes the accommodation, providing essential amenities for everyday living. This cottage is particularly appealing for commuters, as it is conveniently located near the A1 motorway, allowing for easy access to surrounding areas. Additionally, all local amenities and schools are within walking distance, making it an ideal choice for families looking for a community-oriented lifestyle.

In summary, this historical cottage in Old Skellow presents a wonderful opportunity for those looking to create their dream home in a tranquil setting, while still enjoying the benefits of modern conveniences. With its beautiful gardens and potential for enhancement, this property is not to be missed.

Guide price £365,000

The Cottage Cross Hill, Skellow Road

Old Skellow, Doncaster, DN6 8JW



- This character property offers a fabulous location
- Ample parking for several vehicles with detached garage
- Council tax band D and EPC E
- GUIDE PRICE £365,000.00 to £375,000.00
- Rear open aspect views of farmers fields
- Built in 1620 with some original features.
- Opportunity to create a DREAM home.
- 1/2 Acre of mature manicured gardens
- Tranquil setting
- Viewing is advised to appreciate what is on offer

FRONT ENTRANCE

W/C

RECEPTION ROOM WITH
FEATURE WALL

LARGE GARAGE

UTILITY ROOM

LOUNGE

LINK TO 360 VIRTUAL TOUR

DINING ROOM WITH PARQUE
FLOORING

<https://www.madesnappy.co>

KITCHEN

LANDING TO ALL ROOMS

BEDROOM ONE

BEDROOM TWO

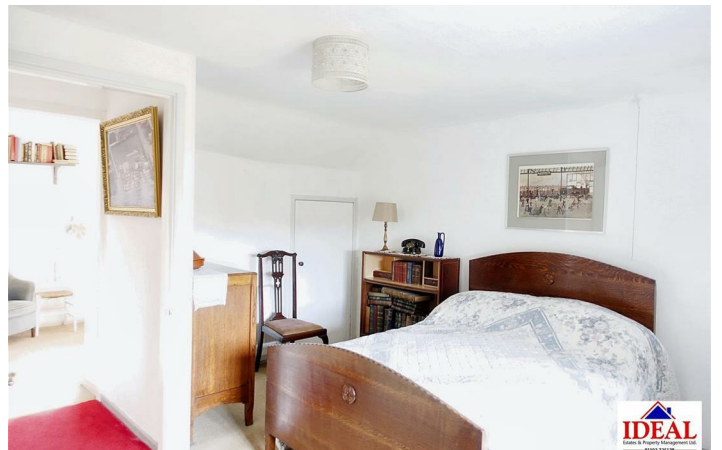
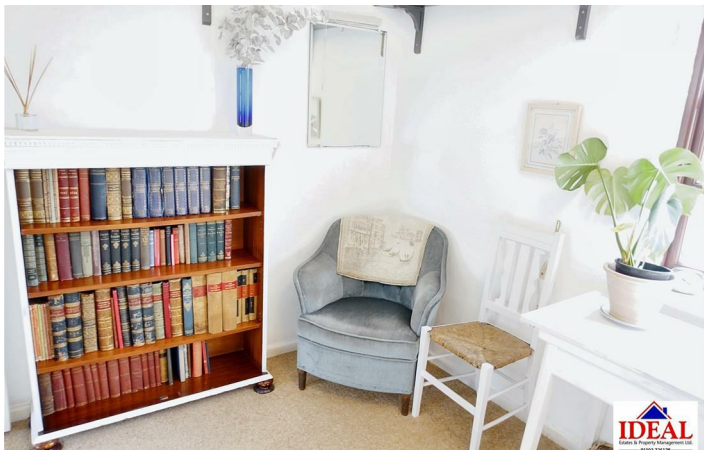
BEDROOM THREE

BATHROOM



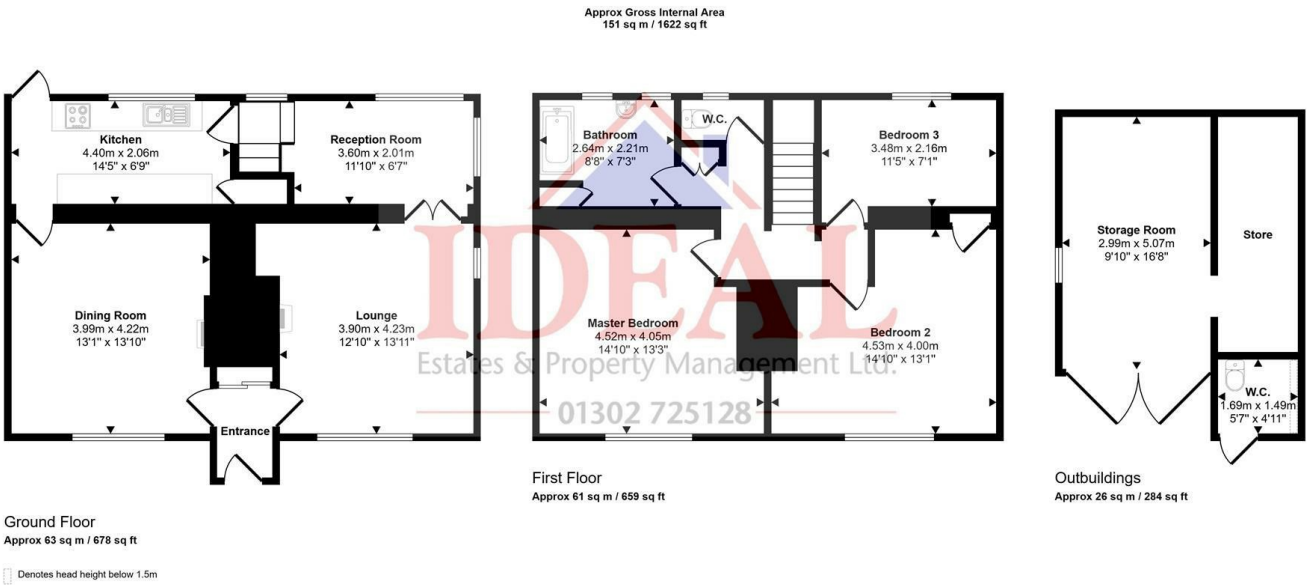
Directions

Skellow is a village in the Doncaster district, in the county of South Yorkshire, England. Historically part of the West Riding of Yorkshire, the village is roughly 5 miles (8 km) north-west of Doncaster.





Floor Plan



These particulars, whilst believed to be accurate are set out as a general outline only for guidance and do not constitute any part of an offer or contract. Intending purchasers should not rely on them as statements of representation of fact, but must satisfy themselves by inspection or otherwise as to their accuracy. No person in this firms employment has the authority to make or give any representation or warranty in respect of the property.

