



20 Sherwood Drive Skellow, Doncaster, DN6 8NY

Nestled in the serene Sherwood Drive of Skellow, Doncaster, this detached bungalow is a true gem waiting to be discovered. Boasting three reception rooms and three bedrooms with potential to convert the first floor bedroom into two separate bedrooms, making this a 4 bed home if desired. This property offers the perfect blend of comfort and style. As you step inside, you'll be greeted by the charm of a home that exudes character. The rear extension with its pitched roof and full-length floor-to-ceiling windows floods the space with natural light, creating a warm and inviting atmosphere throughout. One of the standout features of this bungalow is the spiral staircase leading to a large first-floor bedroom. Complete with fitted wardrobes and an ensuite 4-piece bathroom, this private retreat offers a perfect sanctuary after a long day. The side extension adds an L-shaped entertaining kitchen/dining room, ideal for hosting gatherings and creating lasting memories with loved ones. A utility room and storage cupboard are an added bonus. The spacious dual-aspect open plan lounge and dining room, featuring a cosy log burner, is the heart of the home where relaxation meets elegance. Outside, a large garage with a workshop and log store provides ample storage space, while the good-sized garden with a patio offers a tranquil outdoor escape. Situated on a sought-after quiet street with ample off road parking with electric gated access. Easy motorway access, this property combines convenience with peaceful living. Don't miss the opportunity to make this bungalow your own and experience the best of both worlds - a peaceful retreat with easy access to all amenities.

Offers in the region of £350,000

20 Sherwood Drive

Skellow, Doncaster, DN6 8NY



- Viewing is essential on this deceptively spacious 3 / 4 bed detached dorma bungalow
- A real WOW factor extension with pitched roof and floor to ceiling window
- A modern kitchen / entertaining space
- A spiral staircase to the first floor creates a large bedroom and en-suite bathroom
- Well presented property throughout
- Turn the key and move straight in
- Spacious concrete pattern print driveway for several cars.
- Large garage with workshop
- Log burner and log store
- EPC C and Council Tax C

Front entrance hall

Bedroom Three

Dual aspect lounge / dining room

Extended L shape Kitchen / diner

Utility room & Storage cupboard

Extended reception room / GYM

Room with Spiral staircase

Family bathroom

Bedroom Two

Bedroom one with large fitted wardrobes

En-suite 4 piece bathroom

Front spacious driveway with gated access

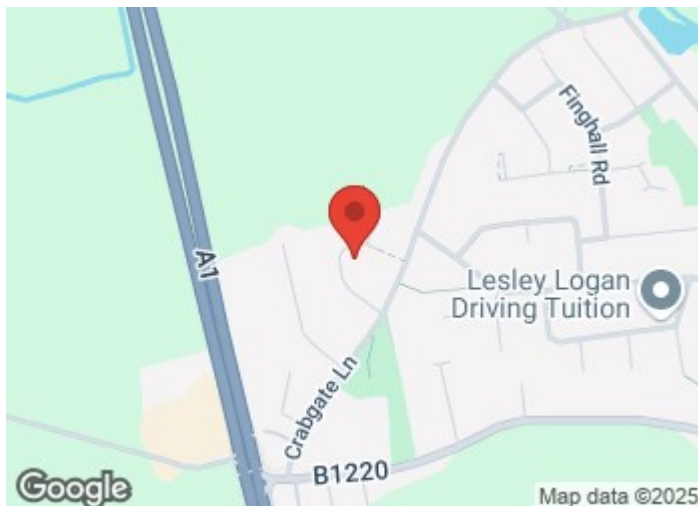
Rear garden with patio

Log store

Large double length garage / workshop

Link for 360 tour

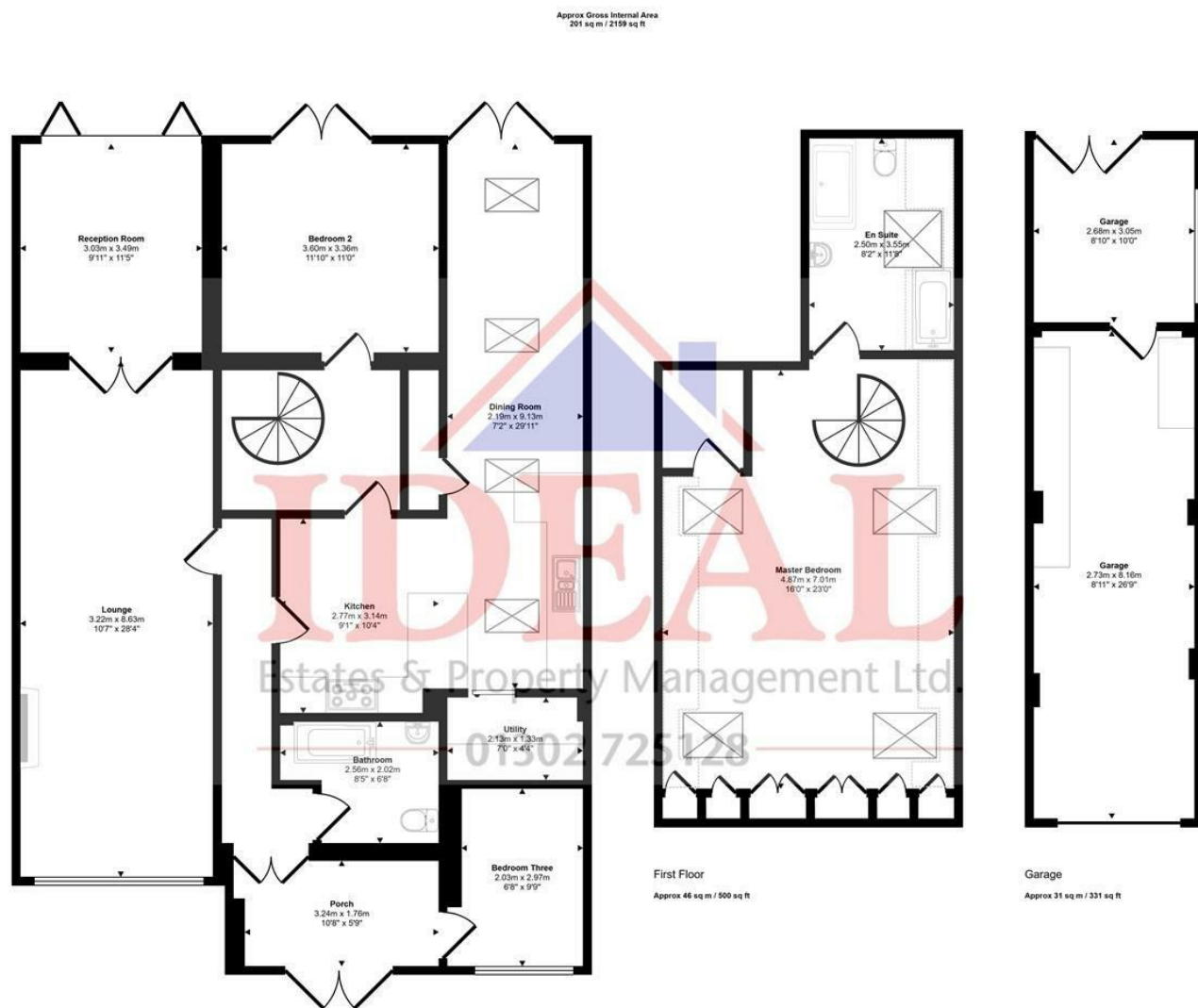
<https://www.madesnappy.co.uk/tour/1g6dbg159e7>



Directions



Floor Plan



Ground Floor
Approx 123 sq m / 1327 sq ft

Denotes head height below 1.5m

This floorplan is only for illustrative purposes and is not to scale. Measurements of rooms, doors, windows, and any items are approximate and no responsibility is taken for any error, omission or mis-statement. Icons of items such as bathroom suites are representations only and may not look like the real items. Made with Made Snappy 360.

These particulars, whilst believed to be accurate are set out as a general outline only for guidance and do not constitute any part of an offer or contract. Intending purchasers should not rely on them as statements of representation of fact, but must satisfy themselves by inspection or otherwise as to their accuracy. No person in this firm's employment has the authority to make or give any representation or warranty in respect of the property.

