



BLOOR HOMES AT FELIXSTOWE SUFFOLK

Creating Better Life Experiences.
One Home at a Time.


Bloor Homes at Felixstowe Sales & Marketing Suite
Off Walton High Street, Walton, Felixstowe, IP11 9QN

 01394 647946





CONTENTS

04/05

Welcome Home

06/07

Exceptional Modern Living

08/09

Built With Families In Mind

10/11

Just Around The Corner

12/13

Lower Your Energy Bills

14

You're In Capable Hands

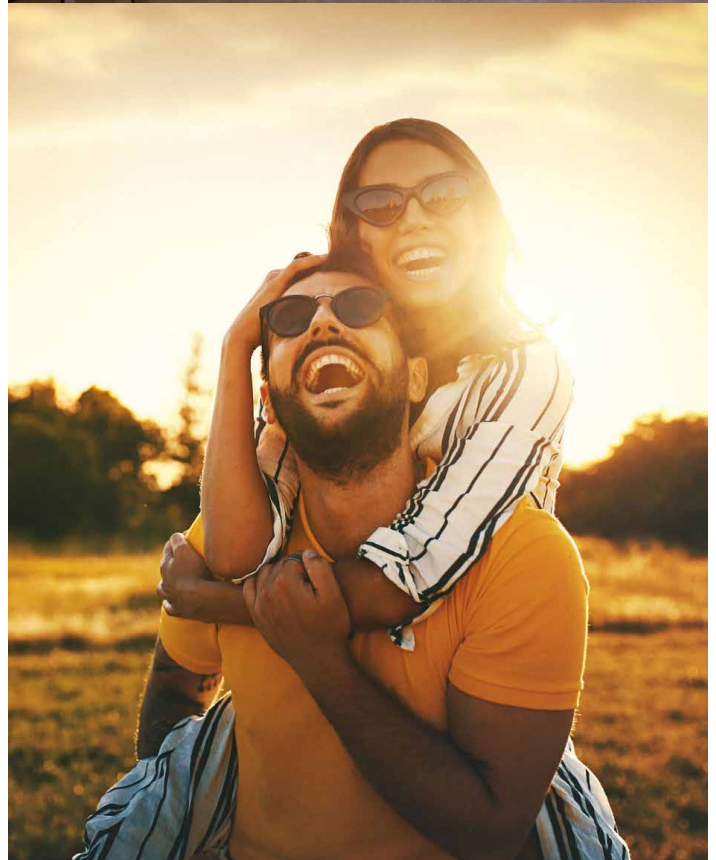
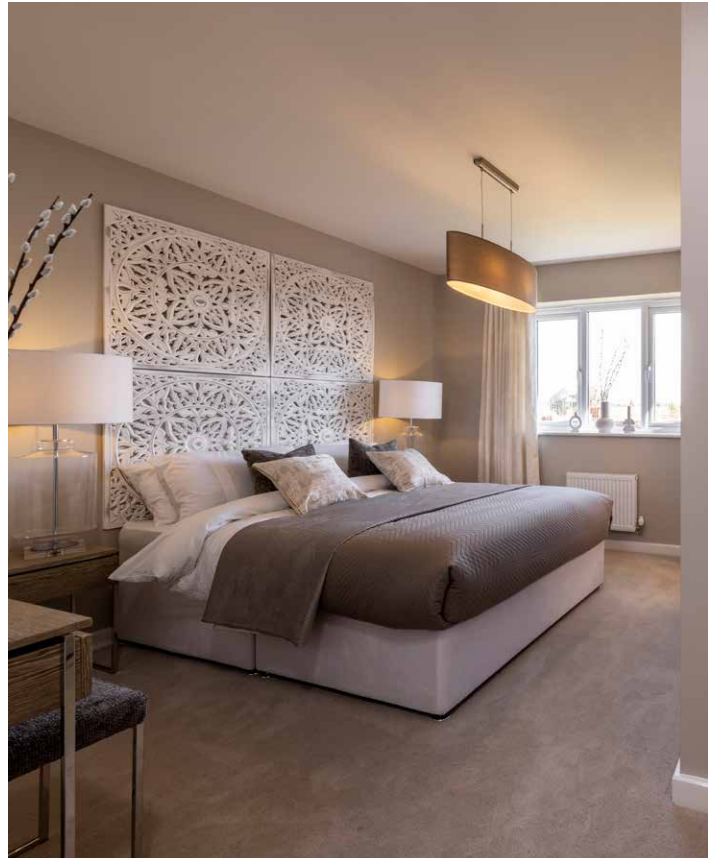
WELCOME HOME

A lot may have changed since the day that John Bloor built the first Bloor home in 1969, but one thing has remained the same. Our dedication to providing beautifully crafted homes in fantastic locations, so you and your family can enjoy life to the fullest.

We're still owned by the Bloor family and today, that same dedication is clearly present throughout our careful consideration of the development layout and each home we've chosen to build here at Bloor Homes at Felixstowe.

We understand that buying a new home is a big commitment so we want your Bloor home here in Felixstowe to be ready to accompany you throughout your life – no questions asked. That's why it's important each one of our homes appreciates your need for space and growth.

Plus, when you reserve your new Bloor home in the early stages of construction, you can have the freedom to choose your internal fixtures and fittings for your kitchen, bathroom and en suite facilities. Our comprehensive 'Your Choice' brochure can help with choosing those extra details for your new home, should you wish to upgrade from our chosen specification here at Bloor Homes at Felixstowe.





1



2

1 2 ↪ Typical Interiors



SAT NAV

Development
Bloor Homes at Felixstowe

Find Us Here
Off Walton High Street, Walton,
Felixstowe, IP11 9QN

**Start your journey to a
stunning new Bloor home
at Felixstowe,
Suffolk.**

EXCEPTIONAL MODERN LIVING

Bloor Homes at Felixstowe is a beautiful collection of new homes in the tranquil village of Walton, located within stunning countryside beside the renowned Suffolk coastal town of Felixstowe.

The development provides a perfect combination of semi-rural living with the connectivity of the nearby village of Trimley and Felixstowe town centre.

Bloor Homes are proud to be building a range of stunning new homes, designed to accommodate a variety of lifestyles.

From three bedroom bungalows, to spacious two, three and four bedroom houses, there is something for everyone, from first time buyers to downsizers looking for an exceptional quality of life.

Felixstowe itself boasts miles of beautiful Suffolk coastline stretching to the north and south with popular seaside attractions, excellent transport and employment links and a community that will make you feel right at home.

A great choice of amenities are also on your doorstep with Trimley Train Station just a short walk from home, characteristic cafes, well-stocked supermarkets, popular pubs and restaurants, leisure centres and hair and beauty salons.

Follow us for
the latest trends
@bloorhomes





① ↳ Artists Impression of Bloor Homes at Felixstowe

② ③ ↳ Typical Interiors of Bedroom & Kitchen

BUILT WITH FAMILIES IN MIND



You'll have many tick boxes for your new home ... fantastic nearby schools could be one of them.

Families moving to Bloor Homes at Felixstowe will appreciate the wide choice of schools for all ages in the surrounding area. Infant, nursery and primary school options include Trimley St Mary Primary School & First Stop Pre-School, Trimley St Martin Primary School, Fairfield Infant School and Colneis Junior School.

For older students, secondary schools include Felixstowe School, Kesgrave High School and the independent Orwell Park School.

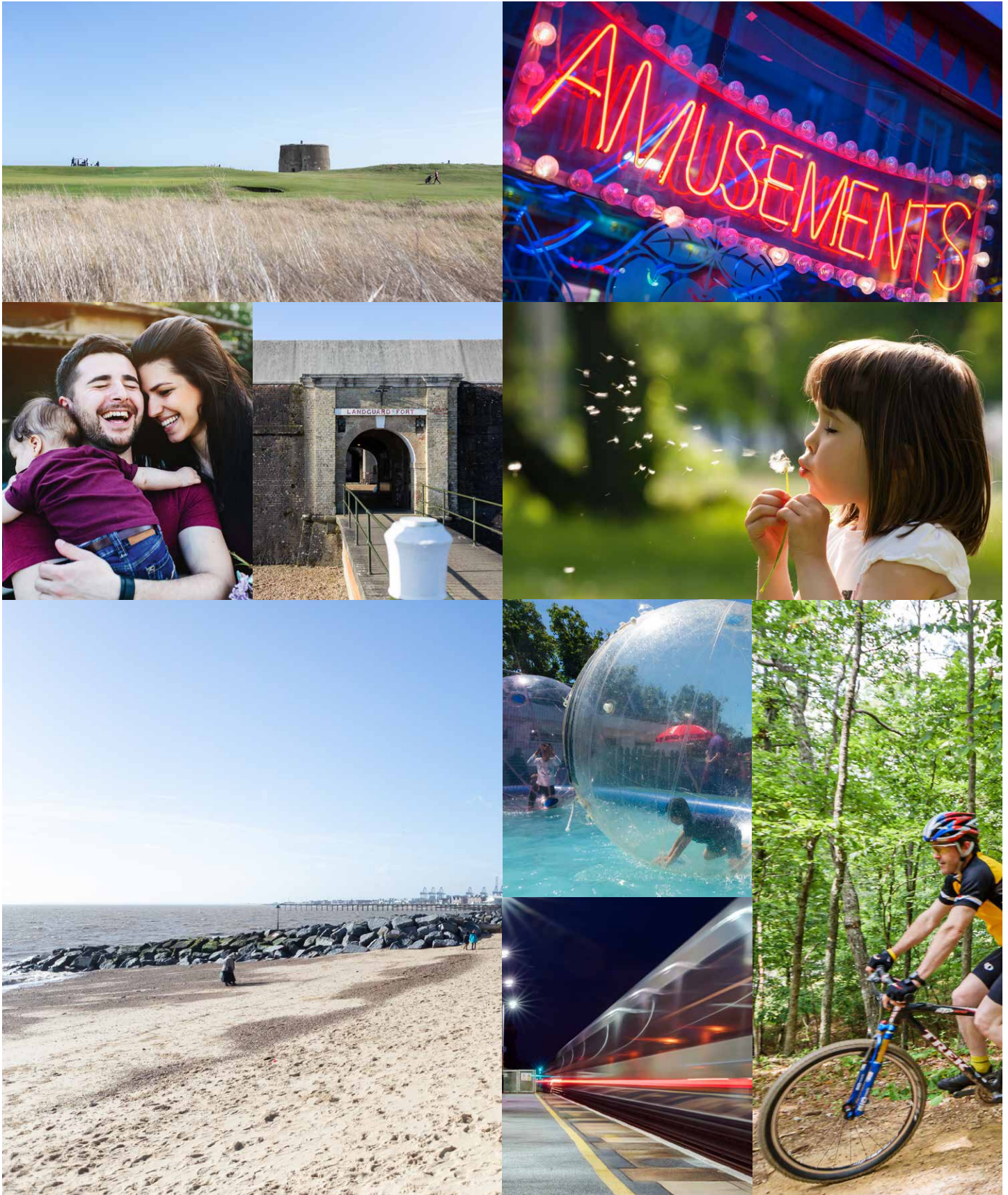
The nearest trunk road to the development is the A14, which is just minutes away. Journeys via this road make travelling to Ipswich (13 miles), Colchester (27 miles) and Bury St Edmunds (40 miles) effortless.

If you prefer to take the train, then Trimley Station is just a 3 minute drive, with regular services to Ipswich, which in turn offers services to Cambridge, Norwich and London Liverpool Street.

Follow us for the latest trends @bloorhomes







↳ Images for illustration purposes only.

JUST AROUND THE CORNER

Distances and journey times calculated using maps.google.com

1.0 MILE

Trimley Station

With regular services to Ipswich, which in turn offers services to Cambridge, Norwich and London Liverpool Street.

1.0 MILE

Landguard Fort

Discover the fort's rich military and maritime heritage, with a maze of rooms and passageways to explore.

6.0 MILES

Twisted Oaks Bike Park & Trails

42-acre site is the perfect place for a day's biking, with a variety of trails, a dual slalom track and a skills and jumping training area.

2.0 MILES

Felixstowe Seafront & Amusements

Felixstowe boasts four miles of sand/shingle beaches with a number of amusements and attractions dotted along the coastline.

2.0 MILES

Felixstowe Spa Pavilion Theatre & Café

A glorious seafront theatre and restaurant complex, with stunning views and an art deco auditorium for up to 900 people.

2.4 MILES

Felixstowe Ferry Golf Club

The only links golf course in Suffolk and one of only 246 true links courses in the world.

4.0 MILES

Trimley Marshes Nature Reserve

This beautiful reserve is just a short drive from home and is ideal for families, with more than 200 acres to explore and enjoy.

2.0 MILES

Ocean Boulevard Fun Park

This exciting family attraction is located on the seafront and offers a variety of rides and activities for adults and children alike.

2.0 MILES

The Boardwalk Café Bar

One of Felixstowe's most popular destinations for food and drink with a view. Overlooking the stunning Suffolk coastline.

↳ All details correct at the time of production.

Follow us for the latest trends
@bloorhomes



SAVE UP TO £2,630 ON YOUR ANNUAL BILLS*

In fact, a new Bloor home could save you up to £2,630 on your annual utility bills compared to a smaller second hand home*.

That's enough for 365 coffee trips, a family cinema visit every month or even 3 months of your mortgage payments!

From the little things like energy efficient lightbulbs and appliances fitted as standard, to noise reducing internal walls and floors, we've carefully considered every aspect of your new home to ensure its quality and energy efficiency. In fact, even the open plan layout of your home can assist with air ventilation!



Follow us for the latest trends @bloorhomes



*Source - <https://www.hbf.co.uk/news/hbf-report-watt-save>



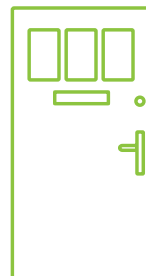
Effective Insulation

To maximise heat reduction we thermally insulate our cavity walls and concrete floors that also help with noise reduction.



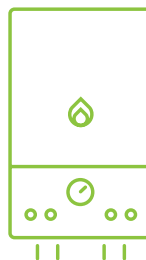
Thermal Double Glazing

Our variation of characterful double glazed windows use modern technology to ensure heat loss is kept to a minimum.



Warmer & Stronger

Our composite front doors are made from strong hardwood that are thermally efficient, extra secure and are low maintenance.



Efficient Insulation

We only install energy efficient boilers with radiators that have thermostatic valves to help you regulate room temperatures.



Buying an energy efficient home can give you peace of mind that your property is helping to keep your utility bills low.

We're committed to building our new homes to maximise energy efficiency, with the latest central heating systems and excellent insulation solutions.

Find out what makes our homes energy efficient





YOU'RE IN CAPABLE HANDS

Choosing to buy a new Bloor home eliminates many of your worries. With no repairs or renovations to do, you will be able to enjoy spending more quality time with your friends and family.

We hope you will never need it, but that doesn't mean we don't understand the peace of mind that comes with having an insurance backed 10 year warranty from the NHBC.

As well as our own rigorous checks carried out during the build process, the warranty provider will also carry out their own inspections on your new home, ensuring that it's built to the high quality we pride ourselves on.

We'll work hard to make sure you know exactly what to do and when to do it. That way, you'll have all the information you need to hand.

Simply follow our step by step guide and know that we'll be here to answer all your questions. The first step to making your move, is deciding if new is right for you.

And what's more, we'll keep on looking after you and your home long after you've moved in.

Most of us don't regularly buy a new home, so it's no wonder it can seem a little confusing at times. But it's not as scary as you might think, we'll hold your hand through the entire buying process. After all, we've been doing this for fifty years.



↳ Typical Interiors



Bloor Homes Eastern,
Bloor Homes at Felixstowe,
Off Walton High Street,
Walton,
Felixstowe,
IP11 9QN
felixstowe@bloorhomes.com
bloorhomes.com



BLOOR HOMES[®]