

BIRCHWOOD
THREE
BEDROOM
HOME

BLOOR HOMES



A three bedroom semi-detached home with a perfectly proportioned lounge and a stunning open plan kitchen / dining room with a separate utility room, cloakroom and French doors opening onto the rear garden. Upstairs the spacious master suite is complete with an en suite shower room.

BIRCHWOOD

A STYLISH THREE BEDROOM
SEMI-DETACHED HOME

**BIRCHWOOD
THREE
BEDROOM
HOME**

FIRST FLOOR:

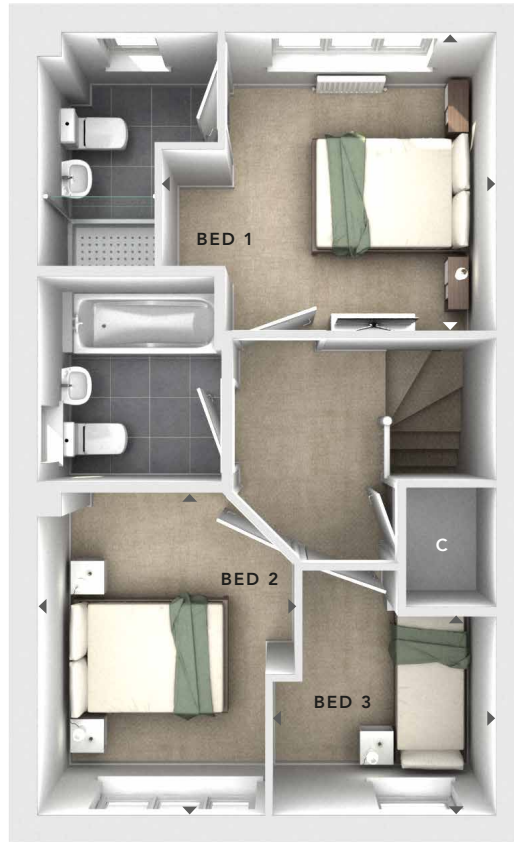
BEDROOM 1
3.48m x 3.10m
11'5" x 10'2"

EN SUITE

BEDROOM 2
2.67m x 3.35m
8'9" x 11'0"

BEDROOM 3
2.32m x 2.37m
7'7" x 7'9"

BATHROOM



**FIRST
FLOOR**

GROUND FLOOR:

LOUNGE
3.67m x 4.38m
12'0" x 14'5"

KITCHEN / DINING
3.19m x 3.69m
10'6" x 12'1"

W/C
1.56m x 1.90m
5'1" x 6'3"

CLOAKS



**GROUND
FLOOR**

C	- Storage
△	- External Access
◀▶	- Measurement Points
© Bloor Homes • M807B 5.0	

These particulars are intended as a preliminary guide for prospective purchasers and should not be relied upon. The elevational treatment for individual house types shows a typical arrangement. Details of materials and design treatments may vary. Any artist impressions shown are not intended to represent any particular plot. Purchasers are advised to inspect the layout plan to establish the arrangement of the house and surrounding property. Internal layouts show a general arrangement which may vary from plot to plot. Room sizes given are approx. overall finished room sizes and subject to normal building tolerances (ie ± 75mm). In all instances purchasers are advised to inspect plot specific information available from our sales team. Nothing in these particulars or verbal assurance shall form or constitute part of any contract, and are given without any responsibility on behalf of Bloor Homes.

