

BRUNTON

RESIDENTIAL



IVESTON AVENUE, GREAT PARK, NEWCASTLE UPON TYNE

£1,200 Per Month

BRUNTON

RESIDENTIAL





BRUNTON

RESIDENTIAL



BRUNTON

RESIDENTIAL



*** 360 VIRTUAL TOUR *** - Available 13/10/2025- Rent £1,200pcm - Brand New Persimmon Seaton build Townhouse - 3 Bedrooms - Additional En-Suite master bedroom - Family bathroom - Fitted kitchen with dining space - Over 3 storeys - Rear garden - Allocated parking - - Very popular residential area - Available on an unfurnished basis - Gas central heating - Easy access to A1 - Call for more information

BRUNTON

RESIDENTIAL



BRUNTON

RESIDENTIAL



BRUNTON

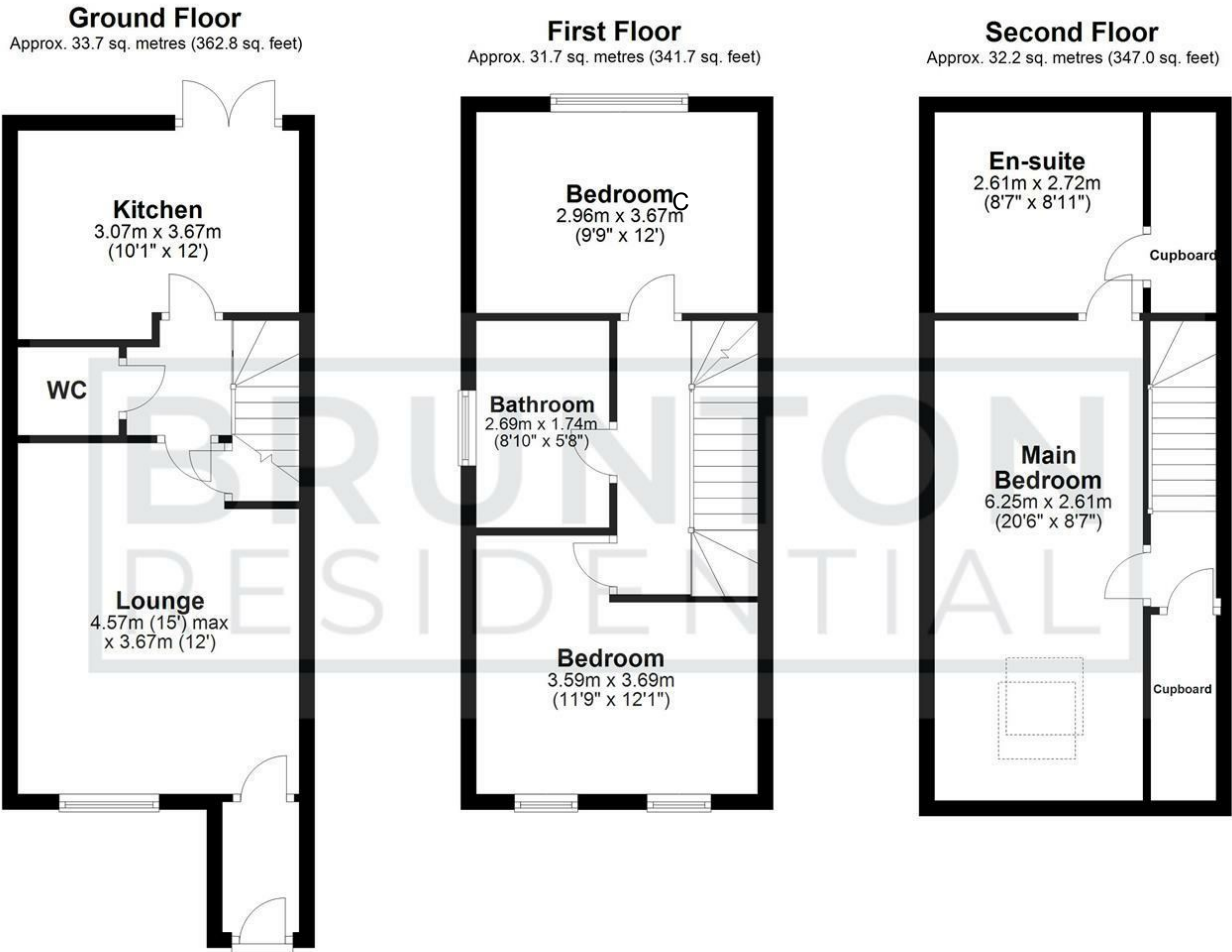
RESIDENTIAL

TENURE :

LOCAL AUTHORITY : Newcastle upon Tyne

COUNCIL TAX BAND : C

EPC RATING : C



Total area: approx. 97.7 sq. metres (1051.5 sq. feet)

All measurements are approximate and are for illustration only.
Plan produced using PlanUp.

