

BRUNTON

RESIDENTIAL



BARRASFORD, HEXHAM

£1,850 Per Month

BRUNTON

RESIDENTIAL





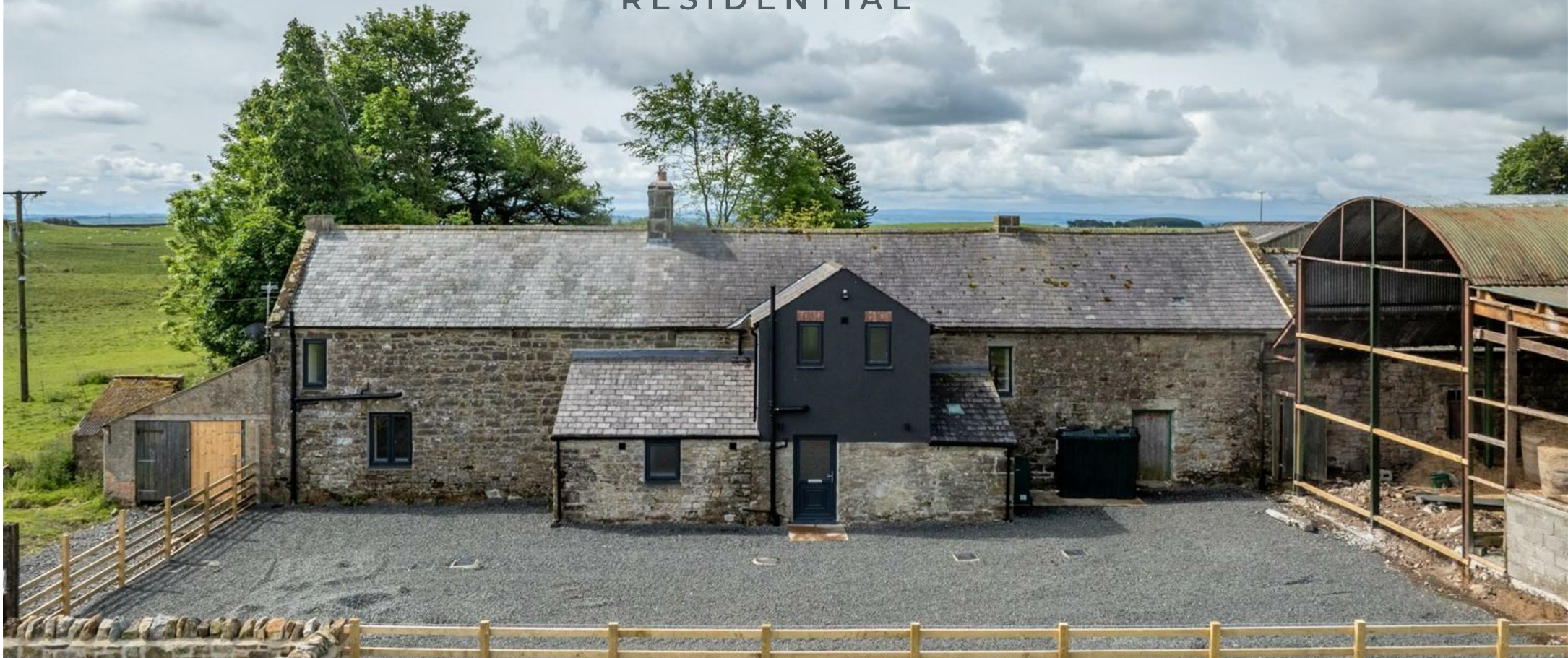
BRUNTON

RESIDENTIAL



BRUNTON

RESIDENTIAL



4 Bedroom Country Home - Available now - £1,850PCM - EPC RATING E - COUNCIL TAX D

Tastefully renovated traditional country home, ideally situated on the outskirts of Northumberland National Park.

Boasting panoramic countryside views, this character-filled property blends timeless charm with modern comforts. The spacious living room features a brand-new woodburning stove.

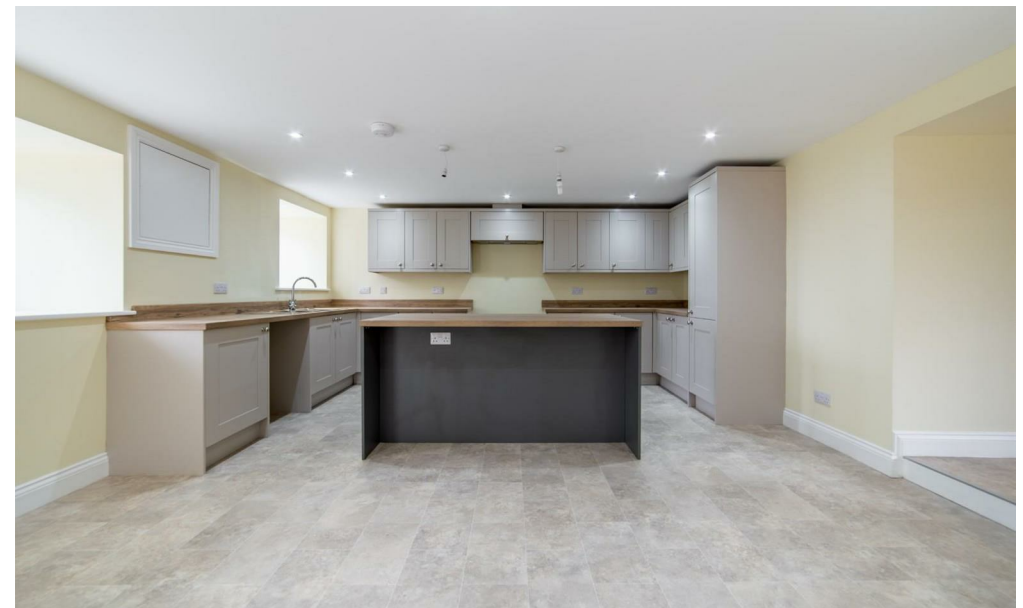
BRUNTON

RESIDENTIAL



BRUNTON

RESIDENTIAL



BRUNTON

RESIDENTIAL

TENURE :

LOCAL AUTHORITY : Northumberland

COUNCIL TAX BAND : D

EPC RATING :

D



Energy Efficiency Rating		
	Current	Potential
Very energy efficient - lower running costs		
(92 plus) A		
(81-91) B		
(69-80) C		
(55-68) D		
(39-54) E		
(21-38) F		
(1-20) G		
Not energy efficient - higher running costs		
England & Wales		EU Directive 2002/91/EC

Environmental Impact (CO ₂) Rating		
	Current	Potential
Very environmentally friendly - lower CO ₂ emissions		
(92 plus) A		
(81-91) B		
(69-80) C		
(55-68) D		
(39-54) E		
(21-38) F		
(1-20) G		
Not environmentally friendly - higher CO ₂ emissions		
England & Wales		EU Directive 2002/91/EC