



**BRUNTON**  
RESIDENTIAL

**£70pppw - Beech Grove Road, Fenham, NE4**

**£2,123 PCM**



**60 Beech Grove Road, Fenham, Newcastle Upon Tyne, NE4 6RS**

**£2,123 PCM**

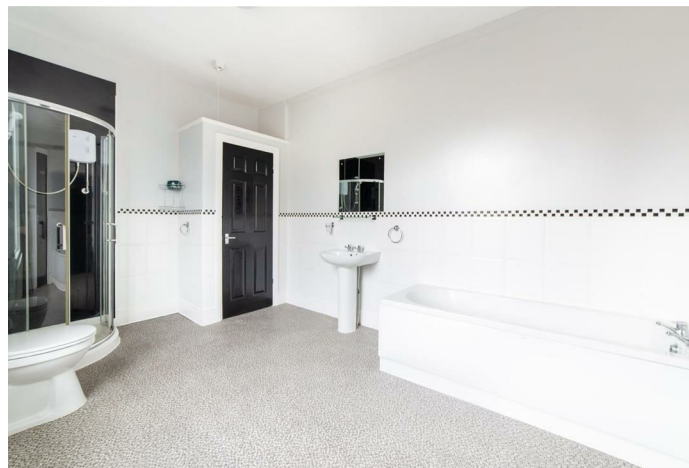
\*\*\*360 VIRTUAL TOUR\*\*\* - Available 1st July 2025- £70pppw / £2,123pcm - 7 Double Bedrooms - 3 Bathrooms - Modern Kitchen/Diner - All New Furniture - High Standard Fixtures & Fittings - Close To Both Uni's - Popular Student Location - Must Be Seen - Furnished .



## Description

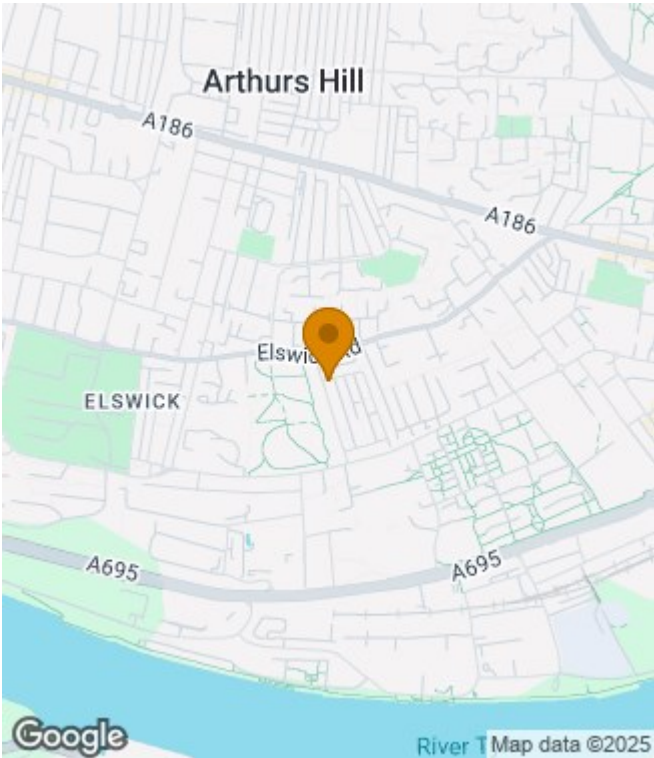
## Situation

Furnished  
Council Tax Band: A  
Available: 1st July 2025

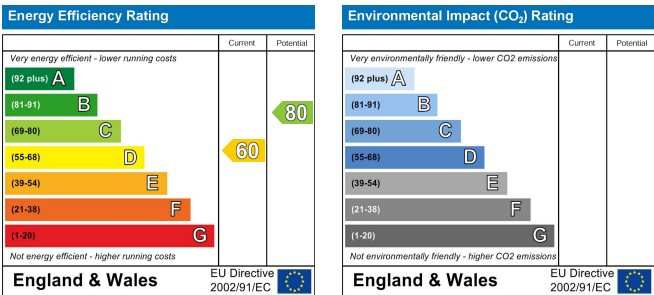


Floor Plans

Area Map



Energy Performance Graph



These particulars, whilst believed to be accurate are set out as a general outline only for guidance and do not constitute any part of an offer or contract. Intending purchasers should not rely on them as statements of representation of fact, but must satisfy themselves by inspection or otherwise as to their accuracy. No person in this firms employment has the authority to make or give any representation or warranty in respect of the property.