

BRUNTON

RESIDENTIAL

T. 0191 236 8347
E. info@bruntonresidential.com
A. 125 St George's Terrace, NE2
W. 2DN
bruntonresidential.com



Lansdowne Terrace

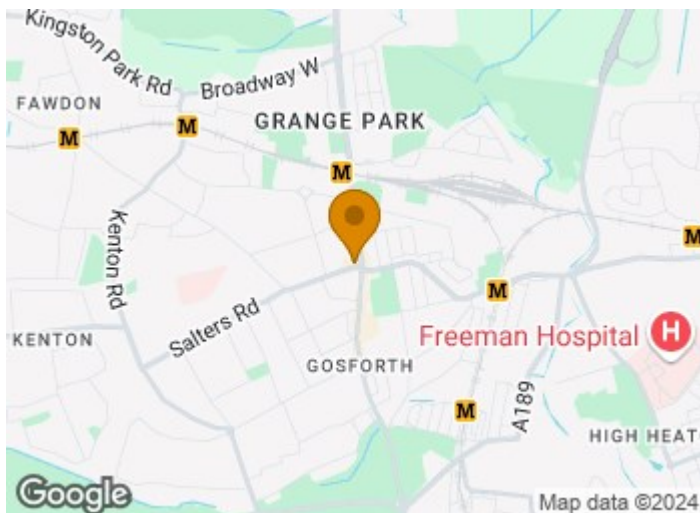
Gosforth Newcastle Upon Tyne, NE3 1HN

Available 30th October 2024 - Rent £1,100pcm - 2 Bed Apartment - Modern open plan living/kitchen - Master Bedroom with en-suite - High Standard Fixtures & Fittings - Modern Bathroom - Very Popular Location - Off-street parking at an additional £50pppw - Call today for viewings

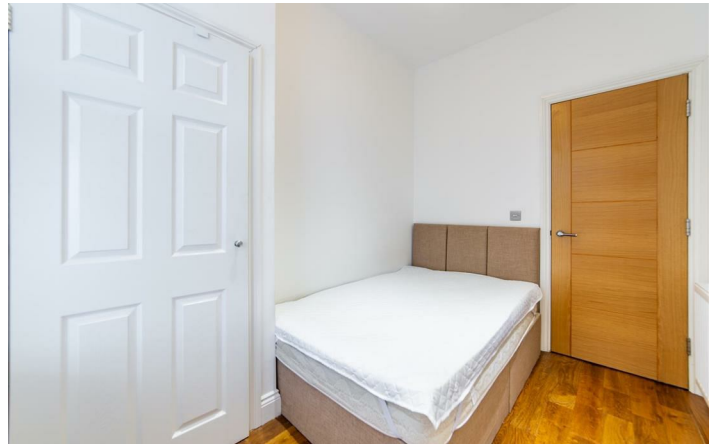
£1,100 PCM

6C Lansdowne Terrace

Gosforth Newcastle Upon Tyne, NE3 1HN

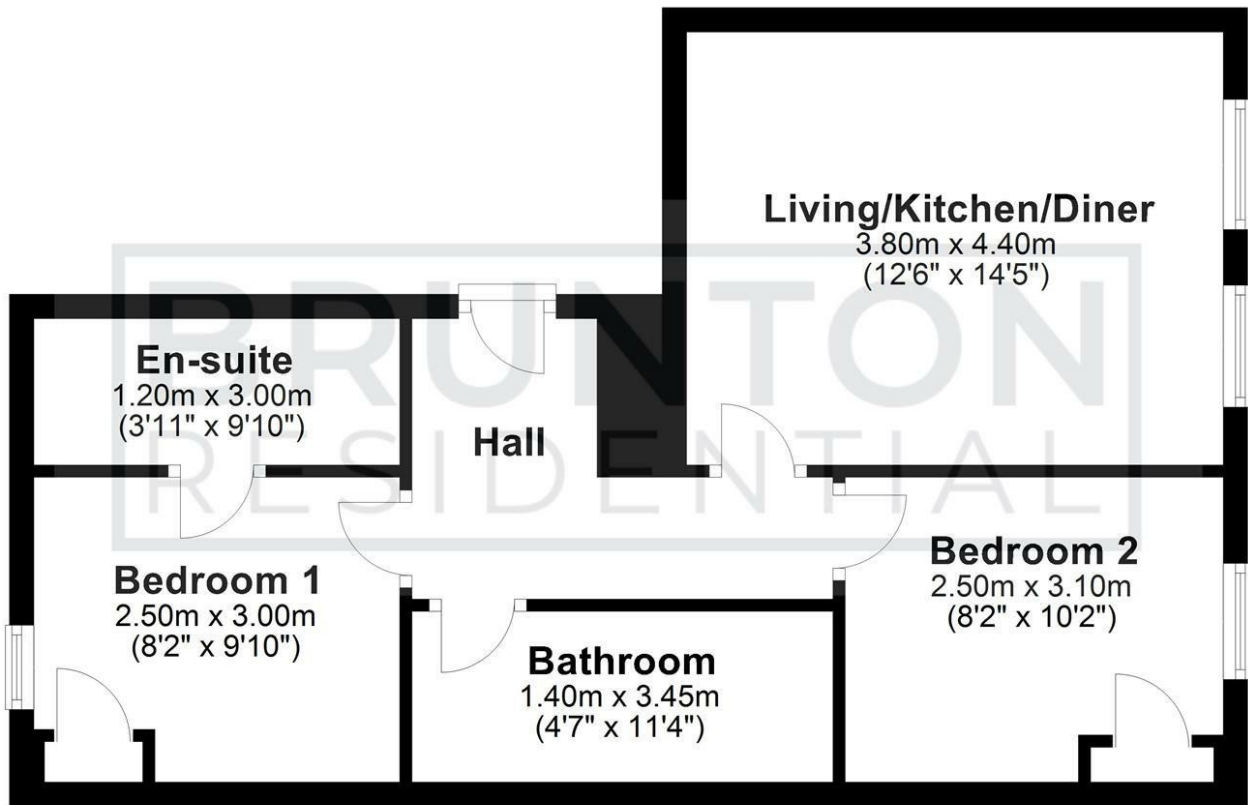


- Available 30th October 2024
- Modern open plan living/kitchen
- Modern Bathroom
- Rent £1,100pcm
- Main Bedroom with en-suite
- Very Popular Location
- 2 Bed Apartment
- High Standard Fixtures & Fittings
- Call today for viewings



Floor Plan

Second Floor



All measurements are approximate and are for illustration only.
Plan produced using PlanUp.

These particulars, whilst believed to be accurate are set out as a general outline only for guidance and do not constitute any part of an offer or contract. Intending purchasers should not rely on them as statements of representation of fact, but must satisfy themselves by inspection or otherwise as to their accuracy. No person in this firm's employment has the authority to make or give any representation or warranty in respect of the property.

| Energy Efficiency Rating | Current | Potential | Environmental Impact (CO ₂) Rating | Current | Potential |
|---|-------------------------|-----------|--|-------------------------|-----------|
| Very energy efficient - lower running costs Green plus A (82 plus) | | | Very environmentally friendly - lower CO ₂ emissions Blue plus A (82 plus) | | |
| B (61-81) | | | B (81-81) | | |
| C (69-80) | | | C (69-80) | | |
| D (55-68) | | | D (55-68) | | |
| E (39-54) | | | E (39-54) | | |
| F (21-38) | | | F (21-38) | | |
| G (1-20) | | | G (1-20) | | |
| Not energy efficient - higher running costs | | | Not environmentally friendly - higher CO ₂ emissions | | |
| England & Wales | EU Directive 2002/91/EC | | England & Wales | EU Directive 2002/91/EC | |