

# BRUNTON

---

## RESIDENTIAL



**BROOMFIELD ROAD, GOSFORTH, NE3**

**£1,300 PCM**



# BRUNTON

---

## RESIDENTIAL









# BRUNTON

---

RESIDENTIAL





# BRUNTON

---

## RESIDENTIAL



**\*\*\*360 VIRTUAL TOUR\*\*\* - Available 6th September 2024 - Rent £1,300pcm - 2 bed upper flat.**  
Beautiful 2-bed upper flat located on Broomfield Road next to Salters Road, close proximity to Gosforth and Jesmond. Renovated recently, this 2 bed briefly comprises of: entrance hall leading up to the first-floor landing, 2 bedrooms with double beds, wardrobes, chest of drawers and bedside cabinets and an additional room for an office. The living room is spacious with 2 piece sofa and coffee table. The modern kitchen is fully equipped with built-in appliances and a gas hob and lastly, there is a modern bathroom to the rear. Externally there is access to the back lane.



# BRUNTON

---

## RESIDENTIAL





# BRUNTON

---

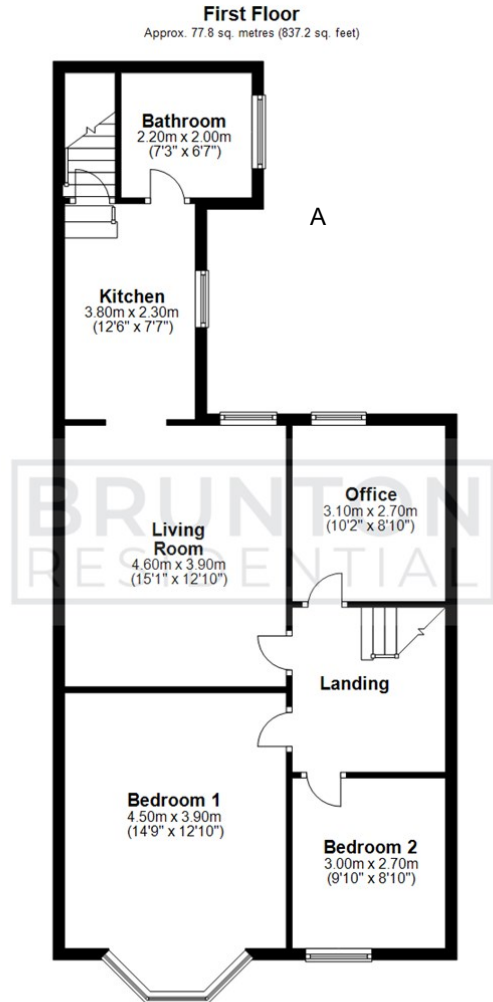
## RESIDENTIAL

This beautiful 2-bed upper flat is located on Broomfield Road next to Salters Road, close proximity to Gosforth and Jesmond. Renovated recently, this 2 bed briefly comprises of: entrance hall leading up to the first-floor landing, 2 bedrooms with double beds, wardrobes, chest of drawers and bedside cabinets and an additional room for an office. The living room is spacious with 2 piece sofa and coffee table. The modern kitchen is fully equipped with built-in appliances and a gas hob and lastly, there is a modern bathroom to the rear. Externally there is access to the back lane.



# BRUNTON

## RESIDENTIAL



Total area: approx. 77.8 sq. metres (837.2 sq. feet)

All measurements are approximate and are for illustration only.  
Plan produced using PlanUp.

TENURE :

LOCAL AUTHORITY : Newcastle upon Tyne

COUNCIL TAX BAND : A

EPC RATING : D

SERVICES :

