

BRUNTON

RESIDENTIAL



MONTAGU COURT, MONTAGU AVENUE, GOSFORTH, NE3

£2,750 Per Month

BRUNTON

RESIDENTIAL





BRUNTON

RESIDENTIAL



BRUNTON

RESIDENTIAL



****Newly Renovated** Available 8th August 2024 - Rent £2,750pcm - Concierge - 3 Bedroom
Luxury Apartment - Balcony Overlooking Town Moor - Off Road Parking - Sought After
Development - Large Open Plan Living Space - High Standard Fixtures and Fittings - Call Today**

BRUNTON

RESIDENTIAL



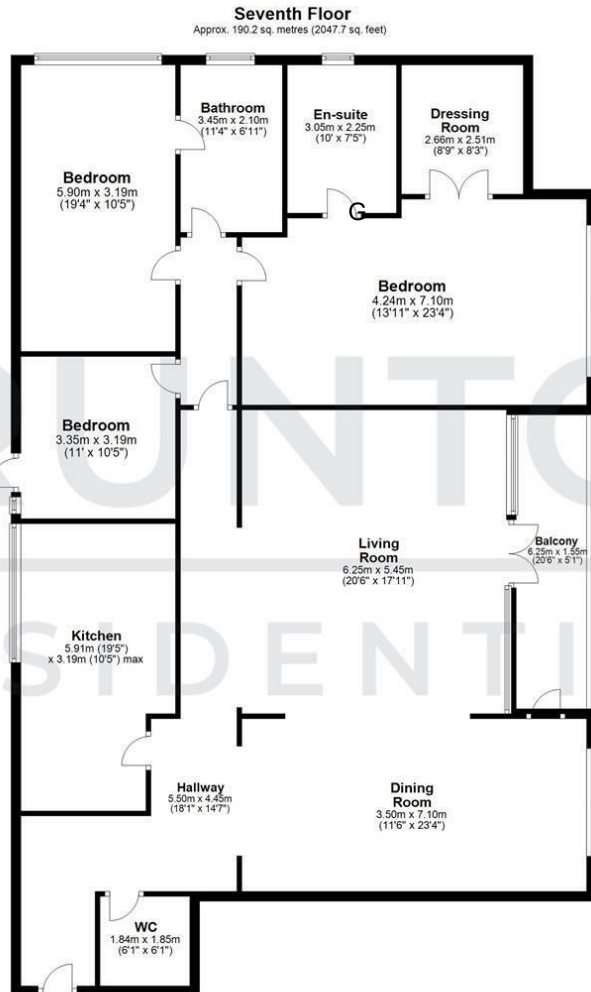
BRUNTON

RESIDENTIAL



BRUNTON

RESIDENTIAL



Total area: approx. 190.2 sq. metres (2047.7 sq. feet)

All measurements are approximate and are for illustration only.
Plan produced using PlanUp.

TENURE :

LOCAL AUTHORITY :

COUNCIL TAX BAND : G

EPC RATING : C

SERVICES :

